

Membership Application



www.kri.or.jp/conso/



Providing open discussion platforms for collaboration



Providing platforms for social experiments (e.g. Test drive)



Creation of R&D joint projects for future business



R&D strategy building based on future market researches in cooperation with National Diet Library



Providing seminars and workshops

Global human resource development
*Providing education programs in cooperation with universities

Keihanna R&D Innovation Consortium

Objective of consortium

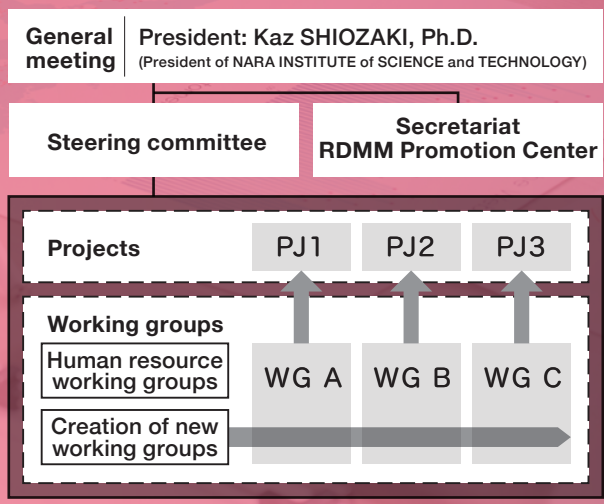
Speeding up the creation of new industries and new business through open innovation under industry - academia - government cooperation with the unique resources of Keihanna Science City.

We provide an open discussion platform during early stage working group without non-disclosure agreement at no cost. The target of each working group is creating joint projects based on future market researches.

We deal with issues related to both commercialization and intellectual properties for the facilitation of the joint project.

Partnership institutes

Partnership universities



Public Foundation of Kansai Research Institute
Industry Innovation Office

RDMM Promotion Center

Keihanna Plaza, Laboratory Bldg. 3F
1-7 Hikaridai, Seika-cho, Soraku-gun, Kyoto 619-0237, Japan
TEL: +81-774-95-5047(main)
Email: rdmm@kri.or.jp

www.kri.or.jp/rdmm/