

KEIHANNA SCIENCE CITY



The Future Aspired by Keihanna Science City

~Keihanna Science City as a place for experimental study and implementation of advanced technologies for the realization of a next-generation smart city~

A city of innovation where new values and industries are continuously created

A city where anyone can live in safety and security

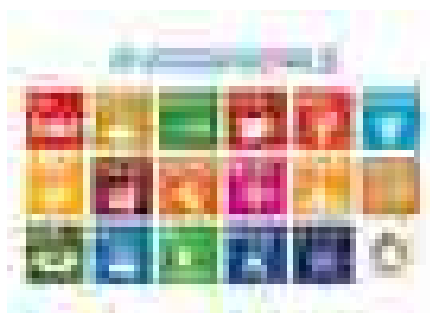
A city of sustainability where no one is left behind...

We are aiming for these realizations.

Keihanna Science City has been constructed and developed as a national project. Today, more than 30 years after its opening, it is home to over 150 research, educational, and cultural facilities. From information and communication to environment, energy, medicine, biotechnology and other fields, a wide variety of basic research is being conducted and utilized in society.

The city will further promote efforts to realize a smart city and create new smart lifestyles by utilizing historical and cultural resources and the rich natural environment, as well as smart technologies such as AI and IoT to solve social issues including urban mobility, healthcare, energy and disaster prevention.

Taking the opportunity of the upcoming "Expo 2025 Osaka-Kansai, Japan", the city aims to become "a world-class research and development open innovation hub" in order to fulfill its role in "contributing to the future of the world" and "creating knowledge and culture" as stated in the vision for the creation of a new city.





City's Overview

Keihanna Science City is a science city being constructed and developed in the green hills of Keihanna, which extends over the three prefectures of Kyoto, Osaka and Nara, based on the Kansai Science City Construction Promotion Act. It is located within 30 km from the city centers of Kyoto and Osaka, and 10 km from the center of Nara City.

Together with "Tsukuba Science City" to the east, it is positioned as a national project with a total area of approximately 15,000 hectares, in which 12 cultural and academic research districts (about 3,600 hectares) are distributed.

Significance and Philosophy

Creating a base for the new developments in culture, science, and research

Contributing to the development of culture, science, and research in Japan and around the world, as well as to the development of the national economy

Foundation of a wisdom-creating city that pioneers the future

*From the Ministry of Land, Infrastructure, Transport and Tourism's basic policy on the construction of Kansai Science City

Features

Utilization of Private Sector Vitality

In the city construction, we will make maximum use of the vitality of the private sector, based on cooperation among various fields such academia, industry, government, and residents. We will advance city development with appropriate cooperation and role-sharing among various fields.

Cluster Type Development

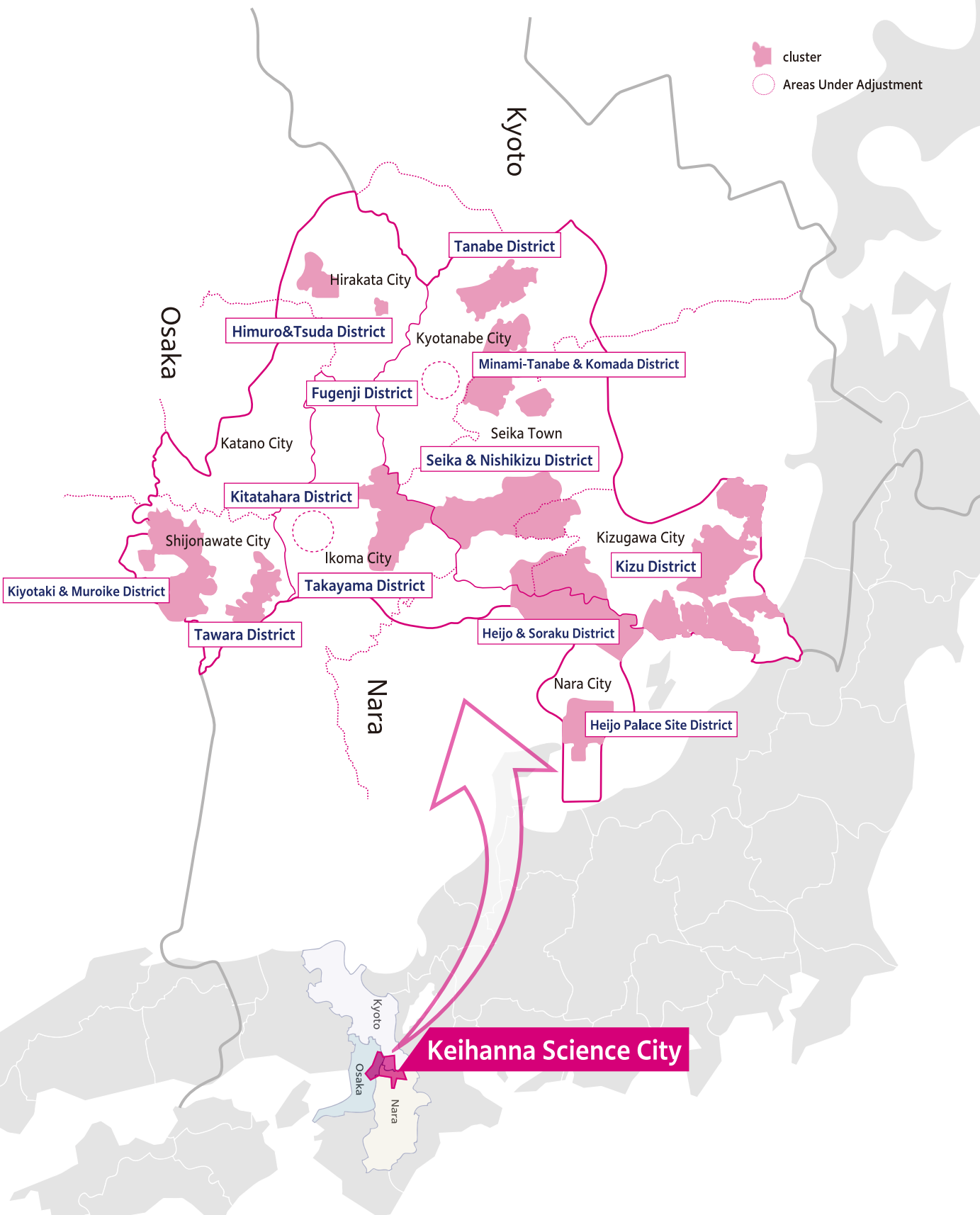
The 12 cultural and academic research districts will be distributed like a cluster of grapes, and development will be promoted in congruence with the conservation of the natural environment, pre-existing urban areas, and agriculture and forestry. Additionally, urban functions will be shared in accordance with the characteristics of each district to harmonize the city as a whole. By proceeding with development sequentially, commencing with areas where the conditions for urban development are in place, we can avoid excessive prior investments and major changes in plans, and development can be carried out systematically in stages.

Composite Development of Research Facilities and Residencies

The development will include not only cultural and academic research facilities but also residential areas, aiming to create a complex city that combines academia and (lifestyle) culture. It will be possible to create a lively and attractive urban environment that is rooted in the lives of the residents, as well as to conduct specified demonstration experiments and evaluations with their participation.

Establishment of a Global Open Innovation Hub

Japan's economic power is relatively declining in the international community due to intensifying global competition. To break through the current situation, we will build a system based on open innovation to quickly and reliably connect research and development investments to industrialization and increase GDP.



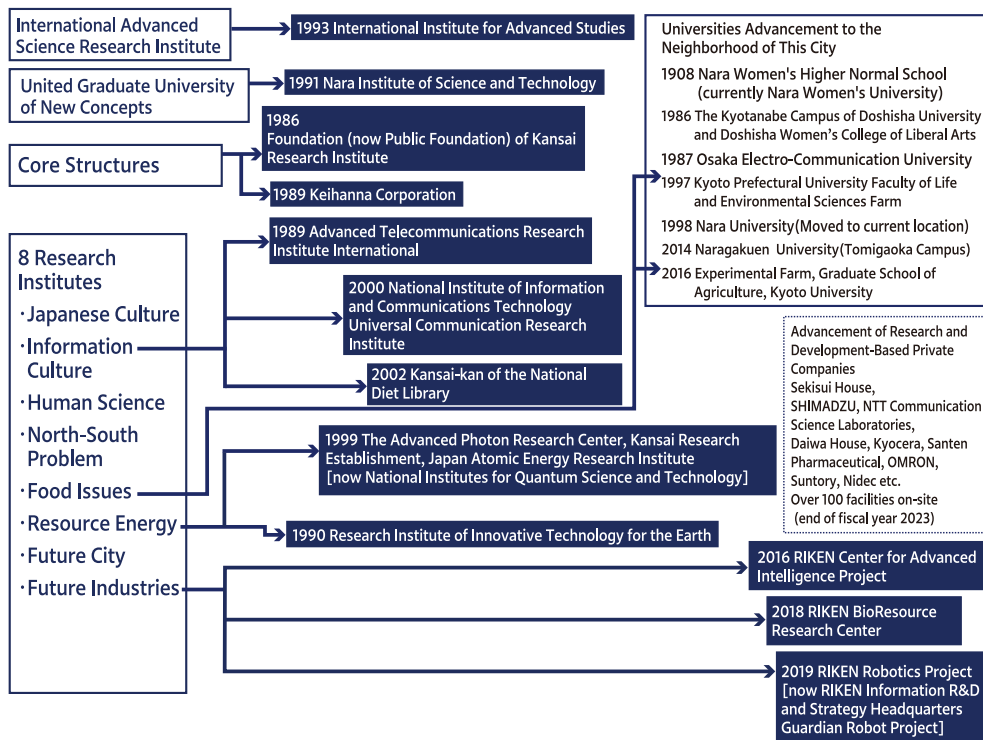
Growth of the City

In 1978, the "Kansai Science City Research Council (commonly known as Okudakon)" was the starting point for the "proposal and conceptualization phase" of the project, and after its concretization of conception, in 1987, the Kansai Science City Construction Promotion Act was promulgated and enforced. Since then, the city has passed through three stages as a national project: the stage of concept realization, city construction, and advanced city management together with city construction.

Keihanna Science City is now in the latter half of the fourth stage which is the "creation of a new city", and is evolving and developing.

Integration of Advanced Research Functions in Keihanna Science City

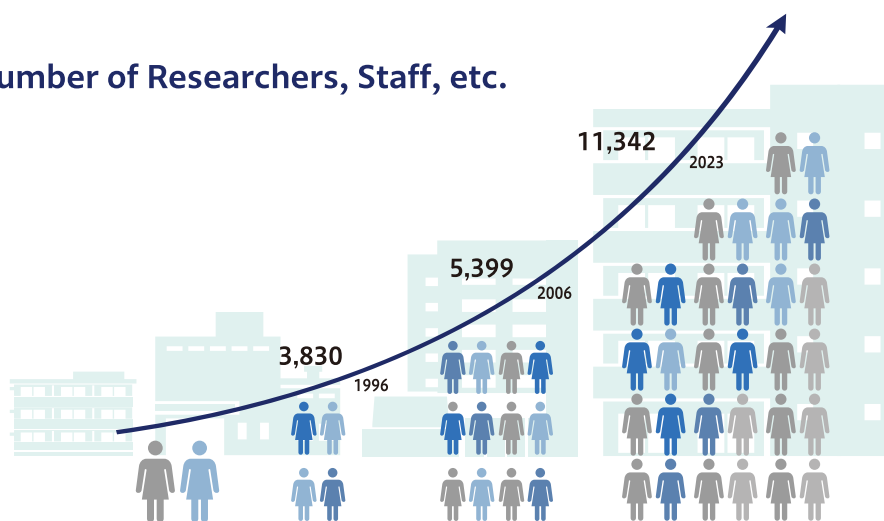
Proposal by Okudakon From 1978 to 1984	Second Stage Plan From 1996	Third Stage Plan From 2006	The Plan for Creating New City From 2016
Establishment of new academic research institutions and the formation of a comprehensive science and research city to solve the issues of human society	<ul style="list-style-type: none"> ● Advanced Science and Research City ● New Industry Creation City ● Pilot Model City ● Culture Creation and Exchange City 	<ul style="list-style-type: none"> ● Creation of New Industries from Keihanna New Culture, Science Research <ul style="list-style-type: none"> · Industry-Academia-Government Collaborations (Research and Development-Based Industrial Facilities) ● A City Open to the World including Asia ● A Creative City of Knowledge That Clears the Path to the Future ● Urban Infrastructure and Transportation Infrastructure 	<ul style="list-style-type: none"> ● Development of Culture and Science Research ● Promotion of Innovation <ul style="list-style-type: none"> · open-innovation · Building a Keihanna Ecosystem · Global Collaboration and Exchange ● Next-Generation Smart City Development <ul style="list-style-type: none"> · Demonstration Field Construction ● Network-Based City Management



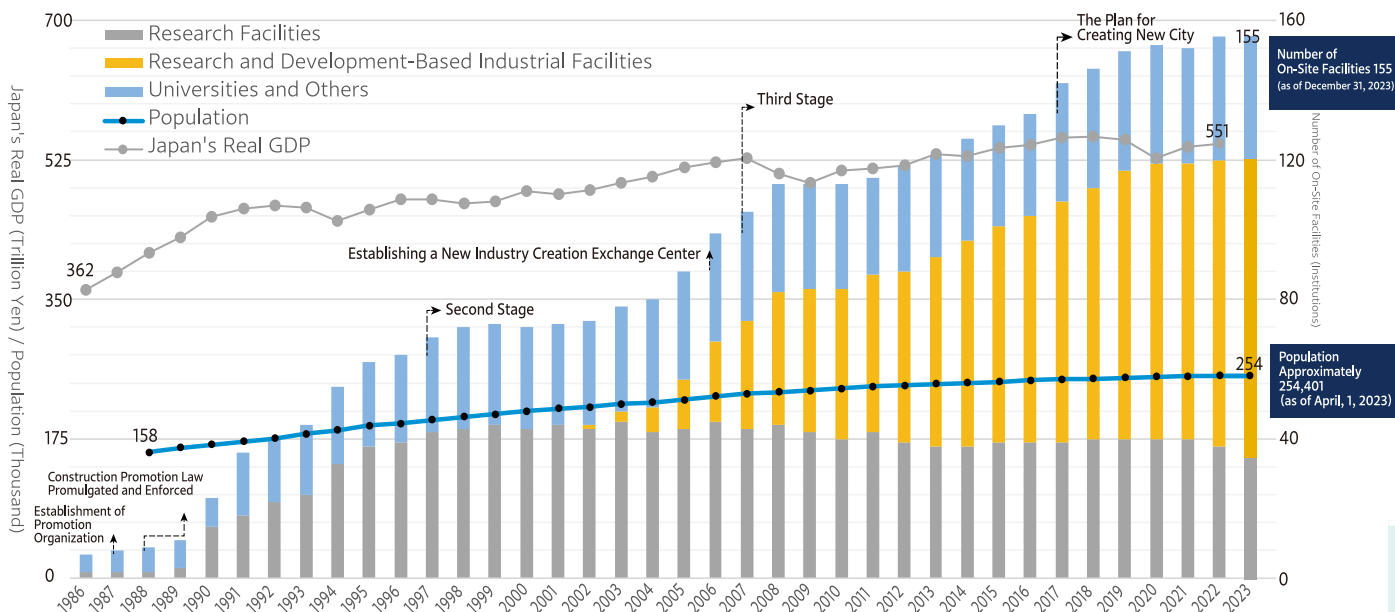
Population Growth and Cluster Development

The population of Keihanna Science City currently exceeds 250,000 and continues to grow. Additionally, in some clusters such as the Kizu district, as a result of a major revision of the original plan in response to changes in society, the six clusters of the Tanabe, Seika and Nishikizu, Heijo and Soraku, Himuro and Tsuda, Kiyotaki and Muroike, and Tawara district have been largely completed, and an excellent urban area has been formed where cultural and science research facilities and residences coexist.

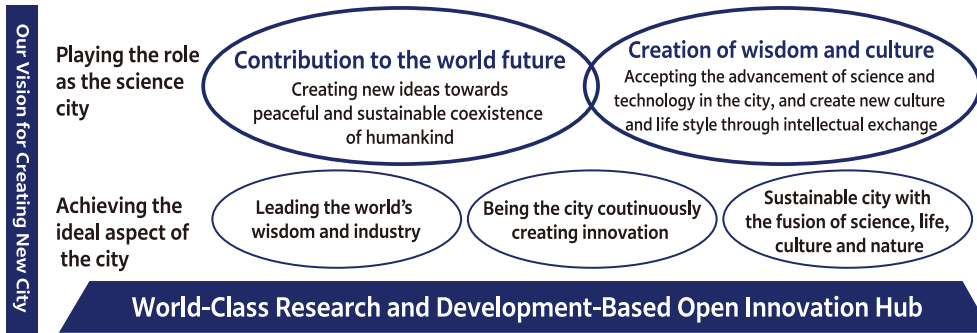
Number of Researchers, Staff, etc.



Trends of Number of Facilities as well as Population of Keihanna Science City, and the Transition of Japan's GDP.



A New City Creation Plan



Keihanna Science City has come to the stage where it can fulfill its role as a cultural and academic research city in the entire Kansai region while increasing its presence in the world. The purpose of this plan is as follows.

- To create an area equipped with a sustainable "advanced urban management" system that enables the various subjects that congregate to mutually utilize the strengths of integration
- To realize new urban development that has never been seen before

With the aim of creating a new city in these two aspects, we present a new system and the direction of the city for the next 10 years, along with the "New City Creation Vision".

1 Development of Culture and Academic Research Pioneering the frontiers of knowledge through the fusion of science and technology and culture

Mainly to realize "a city that is a driving force in the world's wisdom and industry", we indicate the direction of efforts to "promote cultural and academic research" in the natural sciences, humanities, and social sciences that will be a leading force in the world's wisdom.

2 Promoting Innovation Expanding new industries globally through open innovation

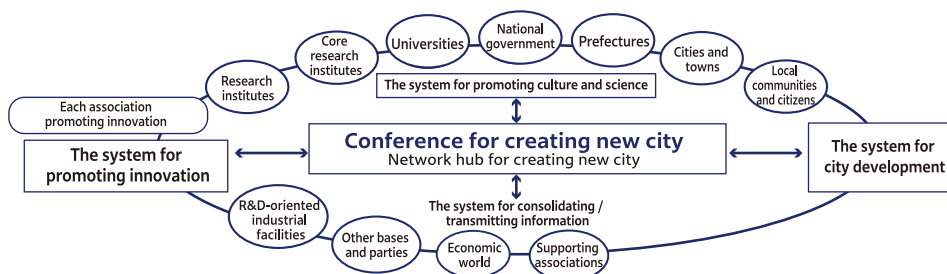
Mainly to realize "a city that is a driving force in the world's wisdom and industry" and "a city that generates innovation in a sustainable manner", we indicate the direction of efforts in "innovation promotion" which will be presented in order to sustain the process from advanced research and development to the creation of new industries.

3 Urban Development Taking the lead in the world to promote the development of next-generation infrastructure to foster smart lifestyles

Mainly to realize "a sustainable city where science, life, culture, and the natural environment are integrated", we indicate the direction of urban development efforts to promote the formation of rich urban spaces and autonomous urban activities.

4 Urban Management Establishing a networked management system that generates synergistic effects

To precisely promote initiatives for new city creations, a network-type management system will be established in which organizations located in the city can participate on an equal footing to create new partnerships and enjoy synergistic benefits. We indicate the direction of the efforts to (1) the operation of a new urban creation council to serve as a network hub for the entire city, (2) a new mechanism for cooperation and collaboration in the above three areas, (3) and the establishment of a mechanism for information aggregation and dissemination that will serve as the basis for urban management.



Development of Culture and Academic Research

The research on the "future image of the world" through cross-cutting collaboration between natural sciences and humanities / social sciences is being developed. The academic research toward a sustainable society, including environment / energy, population / food / water issues and medical and brain science is also being developed.

We promote education and learning programs that allow people to enjoy various kinds of "wisdom", and have created an environment where culture, academia, and science can be considered familiar to daily life and work. Furthermore, by taking advantage of the concentration of various facilities, human resource development is being promoted through collaboration between research and educational institutions and companies.

The Kansai-kan of the National Diet Library provides a vast amount of information resources that support these cultural activities and, as a core institution that serves as the intellectual hub of Keihanna Science City, the International Institute for Advanced Studies carries out various exchange activities to widely disseminate and return research results and intellectual resources to society.

International Institute for Advanced Studies

[Beyond boundaries](#) [Interdisciplinary studies](#) [Regional cooperation](#)
[Human resource development](#)

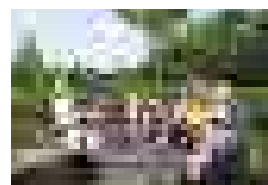


Since its founding in 1984, the International Institute for Advanced Studies has been working under the basic principle to "conduct research what should be researched for the future and happiness of mankind." With the aim of realizing a sustainable society, we practice to identify what are the fundamental issues facing mankind, and to explore and present the direction of solutions to these issues. In addition to research aimed at contributing to the development of the science city area, we also conduct a variety of exchange programs in cooperation not only with academia but also with industry, local municipalities, and residents, contributing to the realization of a safe, reliable, and prosperous society.

<https://www.iias.or.jp/en>



Research Group on "Science and Technology in Consideration of the Global Community in the Future"



IIAS Academi Camp: Junior Seminar for Students

Kansai-kan of the National Diet Library

[Research library](#) [Digital library](#)
[Information on science and technology](#) [Information on Asia](#)



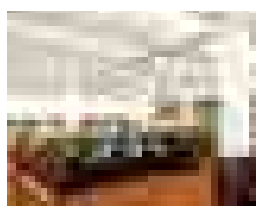
The Kansai-kan of the National Diet Library is a large-scale research library that makes available a wide range of information in support of innovation at Keihanna Science City.

Domestic and foreign books, magazines, newspapers, databases, and electronic journals are available for browsing in the large reading room and study room.

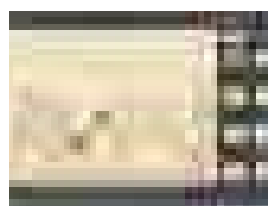
Patrons may also request copies of library materials or browse digital materials via the Internet.

[Photo and logo: Provided by the National Diet Library]

<https://www.ndl.go.jp/en/kansai/index.html>



Reading Room



National Diet Library Digital Collections

Innovation Promotion

A Place for Co-Creation and Innovation Promotion

Keihanna Science City aims to create a "world-class research and development-oriented open innovation hub" that will contribute to the realization of next-generation smart cities. Emphasis is placed on co-creation with global players of both inside and outside the city, and efforts are being made to promote the commercialization of research and development while utilizing the demonstration environment through industry-academia-government-residential collaboration.

Keihanna R&D Innovation Consortium

To create new businesses and new industries, the RDMM (Research & Development for Monodzukuri through Marketing) Support Center promotes industry-government-academia and cross-industry collaboration projects based on the suppositions of future society and markets with open innovation as the key, and promotes the utilization of research and development results. To date, a total of 70 companies have participated in the four working groups (agriculture and food, health, mobility and energy, and new theme creation), creating new businesses and services.

Responsible for operations, the RDMM Support Center is promoting the following projects as a central organization for one-stop support of industry-academia-government collaboration from the initial stage of corporate research and development to commercialization.

K-PeP(Keihanna Public Road Driving Demonstration Test Platform)

This is the Japan's first corporate collaboration and resident participation type public road driving demonstration test platform for new technologies such as autonomous driving and the establishment of next-generation intelligent transport systems.

We are contributing to the creation of new technologies and industries through the following core activities.

- Provision of facility equipment such as KICK
- Provision of Keihanna public road driving demonstration test facilities
- Application on behalf of government and police agencies
- Acceleration of demonstration tests using "Club Keihanna"



Club Keihanna

This is a resident-participation organization established in November 2016 aiming to reflect residents' opinions and ideas in the development of new services and products, urban development, etc., and currently has about 3,500 members from all over Japan. Based on requests from companies, universities, and other organizations in industry, government, and academia, we analyze the market through questionnaires and surveys of residents, consider ideas through resident-participation workshops, and promote demonstration experiments in collaboration with residents, contributing to the creation of new businesses and industries, urban development, and other activities.

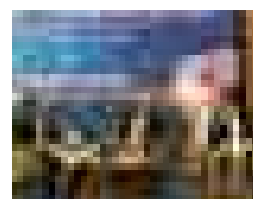
<https://www.kri.or.jp/rdmm/club> (Information for members)

https://www.kri.or.jp/conso/club_2/club.html (Information for companies)

AIJ Platform(ASEAN, IORA and JAPAN Innovation Collaboration Platform)

We collaborate with science cities, research institutes, universities, and companies in ASEAN and IORA (Indian-Ocean Rim Association) countries to provide mechanisms for innovation and the creation of new businesses and industries (international human resource exchange programs, reciprocal use of research institutes, prototyping, and marketing facilities in each country). Additionally, in cooperation with JETRO and other partner organizations, we provide support for local collaboration projects of companies seeking to develop joint technologies and products with ASEAN and IORA countries.

<https://www.kri.or.jp/conso/global/global.index.html>



Research Promotion Council of Keihanna Info-Communication Open Laboratory

The purpose of this council is to promote research and development through industry-academia-government collaboration in fields related to the NICT Keihanna Info-Communication Open Laboratory, to draw out the ICT potential of the Kansai region, and to promote the development of new technologies, human resources, and the creation of new industries. To promote and support research and development in the fields related to the Open Laboratory, the council plans research and development projects, supports the formation of consortiums, promotes the use of facilities, disseminates research and development results, and exchanges information with related organizations.

<https://www.khn-openlab.jp/>

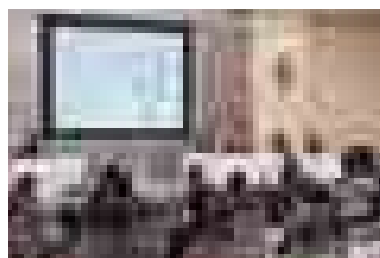
Keihanna Startup Ecosystem

In July 2020, the "Osaka-Kyoto-Hyogo/Kobe Consortium" including Keihanna was selected as a startup ecosystem global hub city related to the Japanese government's "World-Class Startup Ecosystem Base Formation Strategy".

Keihanna Science City have formed the "Keihanna Startup Ecosystem" with the aim of discovering and nurturing Keihanna startups and producing excellent companies (unicorns).

By collaborating with universities, companies, local governments, local financial institutions, support organizations, etc., and by increasing cooperation with ecosystem bases in each city, we will foster entrepreneurship, foster entrepreneurs, and promote commercialization. We aim to provide consistent support.

The fusion of science/technology and art/culture, which is the strength of Keihanna Science City, will lead to the creation of innovation. Competitiveness will be achieved through collaboration between startups and research institutes, universities and companies with advanced technology located in Keihanna Science City. More than 150 facilities are located in Keihanna Science City. We aim to develop a startup ecosystem where powerful startups are created one after another.



Keihanna Research Complex Promotion Council

In the Keihanna Research Complex (RC), facilities located in the Keihanna Science City cooperate, deepen cooperation with institutions outside the region, and integrally promote interdisciplinary research and development, human resource development, commercialization support, etc., and promote innovation.

This activity was started with the "Keihanna Research Complex Project", which was commissioned by the Ministry of Education, Culture, Sports, Science and Technology / Japan Science and Technology Agency (JST) and implemented for 3 years and 6 months from October 2016. In June 2020, we established the "Keihanna Research Complex Promotion Council" and have been working to further develop the global innovation ecosystem unique to Keihanna Science City.

Global innovation collaboration network

By building collaborative relationships with innovation promotion organizations around the world, Keihanna's world-class research of academic institutes and companies and resident participatory demonstration experiment city function can be connected to the players in the world including promising startups which contribute to the creation of innovation.

We are building the "Keihanna Global Innovation Ecosystem" by connecting functions and utilizing KGAP+ and KOSAINN/KOSAINN+ for this purpose.



KGAP+ (Keihanna Global Acceleration Program Plus)

In fiscal 2023, we expanded and enriched our network by signing memorandums of cooperation and holding joint events with innovation support organizations in the MENA region, NRW Germany, Lithuania, Austria, and Taiwan. Additionally, at Kyoto Smart City Expo 2023, we invited InnovatinoRCA from the UK to hold a panel discussion on the theme of fusion of art and technology.



KOSAINN/KOSAINN+ (Keihanna Open Global Service Platform for Accelerated Co-Innovation)

It is a platform that implements global open innovation in demonstration projects for problem solving and business development by Japanese companies and regional revitalization by local governments. ATR utilizes its wide network in Japan and overseas to support team building involving startups that can improve the pioneering and mobility of projects and researchers with specialized knowledge. From 2021, we developed KOSAINN, started "KOSAINN+", which accelerated the creation of projects by supporting startups participating in demonstration projects by Canadian governmental innovation promotion organizations, and contributed to the tea industry in Wazuka-cho, Kyoto Prefecture, as well as problem solving and business development for Japanese companies.

Functions and Facilities That Support Innovation Promotion

Not only large corporations, national research institutes and universities, many small and medium-sized startup companies are located in Keihanna Science City.

Several incubation and support facilities have been set up to support new companies in their startup and growth.

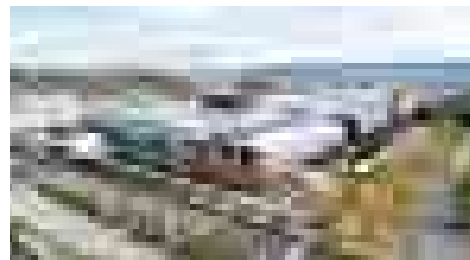
Keihanna Open Innovation Center @KYOTO (KICK)

[Keihanna Robot Technology Center](#) [PoC \(proof of concept\) base](#)
[Rental research space](#) [5G base station](#) [Convention facility](#)



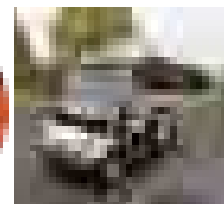
The "Keihanna Open Innovation Center (KICK)" is an open innovation hub that supports advanced research and development in the fields of health and medicine, energy and ICT, agriculture, and culture and education, with the collaboration of KYOTO Industrial Support Organization 21 and Kyoto Prefecture.

<http://kick.kyoto/>



PoC (Proof of Concept) Center, KICK (PoC-K)

Using KICK's indoor Keihanna Robotics Engineering Center, outdoor sites such as the circular road, and 5G (5th generation) base stations, we provide comprehensive support for PoC (Proof of Concept) demonstrations through technology development and experiments with robots and drones, automated driving experiments, as well as the Meta-Comfort Lab (MC-Lab) and 3D printers, and Fab Space where laser cutting machines, etc. can be used.



Keihanna Robotics Engineering Center

Equipped with robots for research and development and positioning equipment, the Keihanna Robotics Engineering Center supports the development and introduction of various next-generation robot technologies that contribute to improving our lives and productivity, including autonomous robot systems, human-robot systems, and robot-robot coordinate systems.



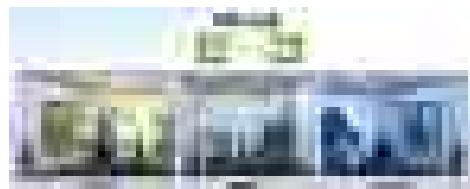
5G Base Stations

There are two 5G (5th generation) base stations located outdoors and one inside the Keihanna Robotics Engineering Center, enabling demonstration experiments for the development of products using 5G technology.



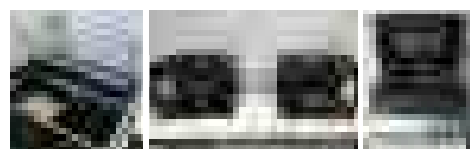
Meta-Comfort Lab (MC-Lab)

The MC-Lab is supplied with equipment that integrally controls information that affects the five senses, such as air conditioning (temperature and humidity), lighting, scenery from the windows, video, sound, and aroma, and enable data analysis of human psychological, behavioral, and biological information to support future commercialization.



Fab (Fabrication) Space

By renting out 3D printers, laser processing machines, CNC milling machines, etc., this space will serve as a hub for prototype production and development for manufacturing companies.



Keihanna Interaction Plaza・Keihanna Plaza Hotel

[Research spaces and labs](#) [Startup support](#) [Conference rooms](#) [Hotel](#) [Conventions](#)

Keihanna Plaza, a composite facility for promoting cultural/academic exchange and research, consists of leasing offices including for startups, a hall that can accommodate 1000 people, conference halls, and a hotel. We support the business of tenant companies, invite conventions concerning cultural and academic research, and hold events.

It can also be used for exhibitions, seminars, networking events, and accommodation trainings.

<https://www.keihanna-plaza.co.jp/english>

<https://hotel.keihanna-plaza.co.jp/>
global online travel agencies available



Advanced Telecommunications Research Institute International (ATR)

[Research and business development](#) [Global collaboration](#)
[Support and entrepreneurship support](#) [Open innovation promotion](#)

We are working to build a global innovation ecosystem in Keihanna Science City through brain imaging research support services including MRI imaging and consulting by ATR-Promotions, promoting research and business development by opening the wireless research environment to public and providing consulting services, support for accepting researchers and interns from other countries by leveraging our extensive experience and achievements, implementation of support programs for startups in Japan and overseas, support for project creation to solve challenges of companies and other entities through open innovation and operation of coworking spaces.

https://www.atr.jp/index_e.html



Anechoic Chamber



fMRI



KGAP+ Group Photo

Doshisha Center for the Promotion of Venture Business

[Entrepreneurship](#) [Second founding](#) [Industry-academia collaboration](#)
[Regional exchange](#) [Manufacturing and engineer exchange space](#)

D-egg is an incubation facility operated by the Organization for Small & Medium Enterprises and Regional Innovation, Japan (SME) in cooperation with Kyoto Prefecture and Kyotanabe City at Doshisha University's Kyotanabe Campus. Residents of this facility will receive various subsidies from Kyotanabe City, as well as extensive support for overall management from the incubation manager stationed here.

<https://www.smrj.go.jp/incubation/d-egg/>



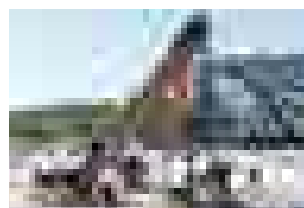
Kyotanabe
Monozukuri Workshop D-fab

Takayama Science Plaza

[Support for education and research](#) [Industry-academia collaboration](#)
[Community activities](#) [Science](#) [Offices for rent](#)

This activity base is operated by the Foundation for Nara Institute of Science and Technology so as to provide assistance to NAIST, industry-academia cooperation and regional interactions. It also encourages children's curiosity for science through participating in "Science Experiment Class", "Science Land", etc.

<http://www.science-plaza.or.jp>



Children's Science Square

Core Research Institutions

In Keihanna Science City, advanced research and development in various fields such as environment and energy, information and communication technology (ICT), bioscience, optical science, and robotics is being conducted.

Advanced Telecommunications Research Institute International (ATR)

[Computational neuroscience](#) [Deep interaction science](#) [Wireless and communications](#)
[Life science](#) [Global innovation ecosystem](#)



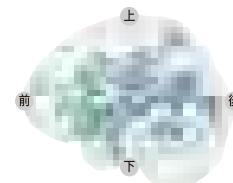
Under the newly formulated of principle “Together to the Top for Future Society” in May 2023, ATR drives innovation ecosystem as a research institution while it addresses challenges through pioneering research and innovation in ICT-related fields with an international perspective and elevates external collaboration and personal exchange.

We are conducting research and development in the fields of brain information science to investigate brain functions and apply consequential results; deep interaction to deeply understand the interactions between human-robots; wireless and communications to achieve highly reliable telecommunications technology and radio wave utilization; and life science to promote cross-disciplinary science, and are working to commercialize results through affiliated companies and "Keihanna ATR Fund".

https://www.atr.jp/index_e.html



R&D of Android Avatars with Beyond-Human Expressive Capabilities
 JST Moonshot R&D Avatar Symbiotic Society Project / RIKEN



a network decoded from fluctuations in brain activity

National Institute of Information and Communications Technology (NICT)

Universal Communication Research Institute (UCRI)

[Information and communication technology](#) [Universal communication](#)
[Multi-language](#) [Dialogue](#) [Behavior support](#)



UCRI is one of Japan's leading R&D centers in the field of AI and is engaged in social implementation and R&D related to multi-language, dialogue, behavior support support technologies aiming to achieve universal communication among the people of the world. We will contribute to solving social issues and creating new values by eliminating the barriers of language, knowledge, and data usage, in international business, elderly care, and environmental risk reduction, etc.

<https://ucri.nict.go.jp/en/>



Prototype simultaneous interpretation system



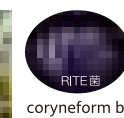
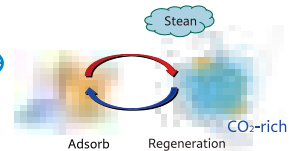
Web-based Knowledge Disseminating dialog Agent (WEKDA)



Predicting mobility risks by cross-data analysis

Research Institute of Innovative Technology for the Earth

[Global warming](#) [CCUS](#) [Global warming mitigation scenarios](#)
[Biorefinery](#) [DAC\(Direct Air Capture\)](#)



Production of biofuels and chemicals from non-food biomass using microorganisms

We are conducting research and development of innovative energy and environmental technologies as a COE for global warming countermeasure technology. These include developing CCS technology that captures CO₂ from the exhaust gas of power plants and steel works and stores it in an underground aquifer, CO₂ utilization technology that use the recovered CO₂ to produce fuels and chemicals, biorefinery technology to produce fuels and chemicals from non-food biomass, direct air capture (DAC) technology that recovering CO₂ from the air, and systematic study regarding policies and measures to mitigate global warming through the analysis and the evaluation of various countermeasures.

<https://www.rite.or.jp/en/>

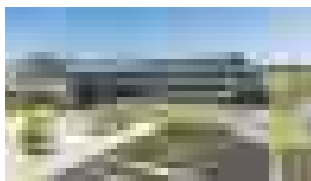


Visualization of CO₂ distribution in a sample rock using X-ray CT

Nara National Research Institute for Cultural Properties

[Research on cultural properties](#) [Nara Palace Site](#) [Wooden tablet](#)
[Excavation survey](#) [Immovable cultural property](#)

The institution is located in Nara City, adjacent to the Nara Palace Site (the Heijo Palace Site). This is an organization that comprehensively surveys and researches cultural properties, mainly ruins, buildings, gardens, and cultural landscapes, which are called real estate cultural properties. Activities extend not only to within Japan but also overseas including other Asian countries. Additionally, it provides training, cooperation and advice to officials in charge of cultural properties in Japan and overseas.
<https://www.nabunken.go.jp/english/>



The Main Building of Nara National Research Institute for Cultural Properties



Remains were excavated and preserved during the construction of the government building

RIKEN

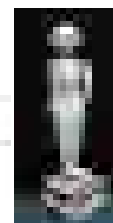
[Disease modeling/Drug discovery research and platform development/Disease-specific iPSC cells](#)
[Machine learning/Artificial intelligence \(AI\)](#)
[Computational theory of mind/Autonomous robot that can make people feel the "heart"](#)
[Collaboration with industry and academia/Co-creation](#)

As Japan's sole comprehensive research institute in the natural sciences, RIKEN conducts research and development in a wide range of fields at many sites in Japan and overseas. With the goal to generate world-class research results, RIKEN has established a number of "science and technology hubs" that collaborate with industry and universities to bring about innovation. Research in Keihanna Science City is being conducted by teams from the Guardian Robot Project (GRP) at the RIKEN Information R&D and Strategy Headquarters and the RIKEN Center for Advanced Intelligence Project (AIP), as well as the iPSC-based Drug Discovery and Development Team at the RIKEN BioResource Research Center (BRC).

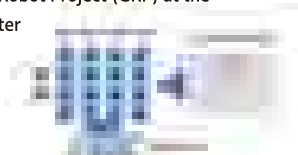
<https://www.kobe.riken.jp/en/about/map/keihanna/>



Human iPSC cells and Drug discovery



Robot "Indy"



Crustal deformation analysis by deep learning incorporating physical laws

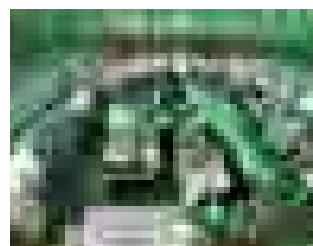
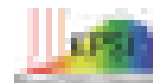
National Institutes for Quantum Science and Technology (QST)

Kansai Institute for Photon Science

[Quantum science and technology](#) [High-intensity lasers](#) [Quantum scalpel](#)
[Industrial and medical applications](#) [The Kids' Science Museum of Photons](#)

Following the successful development of powerful lasers such as J-KAREN-P, an ultra-short pulse laser of the world's top class, we work on academic, medical, and industrial applications for high power lasers, including development of a compact laser accelerator for use in particle beam cancer therapy, practical use of remote and non-contact methods to detect defects in concrete, and a palm-sized non-invasive blood glucose level sensor and more.

<https://www.qst.go.jp/site/kansai-english/>



World's top class ultra-short pulse high intensity laser J-KAREN-P

Universities

Universities in Keihanna Science City are actively developing regional collaboration with research institutes, companies, local governments, and residents. The universities also holds annual public lectures in collaboration with the National Diet Library under the keyword "Delivering wisdom from Keihanna".

Osaka Electro-Communication University (Shijonawate Campus)



[Information education](#) [Sports](#) [Games](#) [ICT](#) [Community contribution](#)

In April 2025, the current Faculty of Medical and Health Sciences will be reorganized and developed to establish the Faculty of Health Informatics* (Course of Biomedical Engineering*/Course of Physiotherapy*/Course of Sport Sciences*). Together with the Faculty of Information Studies (Digital Game Department/Game & Media Department/Information Department), we are developing human resources who can play an active role in the coming Society 5.0 society. ※Tentative name/installation plan in progress



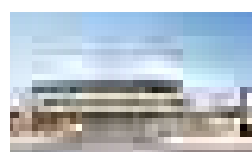
<https://www.osakac.ac.jp/en/>

Experimental Farm, Graduate School of Agriculture, Kyoto University



[‘Next-generation’ agricultural technology](#) [‘Green energy’ farm](#)

The Experimental farm of Kyoto University (Kizu Farmstead) with a site area of 24.6ha is equipped with the latest facilities and equipment, which are used to carry out agricultural education and research and to produce agricultural products. Also, as a base for the development and demonstration of the ‘Next-generation’ agricultural technology that creates a prosperous future, we aim to build an agricultural production model "Green Energy Farm" that simultaneously produces renewable energy and agricultural production.



<http://www.farm.kais.kyoto-u.ac.jp/>

Kyoto Prefectural University (Seika Campus) Faculty of Agricultural and Food Sciences Farm / Industry-Academia-Government Collaboration Research Hub Facility



[Bioscience](#) [Regional contribution](#) [Industry-academia cooperation](#)

It consists of two areas: "Industry-Academia-Public Collaboration Research Center Facility Area" and "Faculty of Agricultural and Food Sciences Farm". The total site area is approximately 16 hectares, and "Faculty of Agriculture and Food Sciences Farm" promotes practical training for students and the advancement of research. "Industry-Academia-Public Collaboration Research Center Facility Area" serves as a research base for industry-academia-public collaboration, and is engaged in joint research related to plants, environment, medicine, etc., as well as the creation of university-originated ventures and new industries, and the accumulation of companies.



Faculty of Agricultural and Food Sciences Farm
<https://www2.kpu.ac.jp/agricul/ufarm/>



Industry-Academia-Government
Collaboration Research Hub Facility

Doshisha Women's College of Liberal Arts

[Education](#) [Pharmacy and nursing](#) [Social studies](#)
[Arts and design](#) [Global communication](#)

Established in 1986, the Kyotanabe Campus has four faculties with approximately 4,200 students which include the Faculty of Liberal Arts, the Faculty of Contemporary Social Studies, the Faculty of Pharmaceutical Sciences, and the Faculty of Nursing. Together with the Imadegawa Campus located on the north side of the Kyoto Imperial Palace in Kyoto City, we aim for further development as a comprehensive university for women with 6 faculties, 11 departments, 1 advanced course, and 5 graduate schools.



The Symbol of Kyotanabe
Campus, Yuwakan

<https://www.doshisha.ac.jp/en/index.html>

Doshisha University (Kyotanabe Campus・Gakken Toshi Campus)

[Science and engineering](#) [Life science](#) [Data science](#) [Sports](#) [Language and culture](#)



The Kyotanabe Campus is equipped with state-of-the-art experimental facilities and equipment, information and education facilities, as well as a sports environment.

Research activities centering on medical-engineering collaboration are being conducted at the Gakken Toshi Campus.

<https://www.doshisha.ac.jp/en/index.html>



Gakken Toshi Campus



Kyotanabe Campus

Naragakuen University

[Human education](#) [Health science](#) [Nursing](#) [Rehabilitation](#)



Naragakuen University integrated the Sango and Tomigaoka campuses into the Tomigaoka Campus with the aim of improving the quality of its educational content and further development.

With the integration of the campuses, we will improve the learning environment and focus on the further education of "human power".

<http://www.naragakuen-u.jp>



Nara Institute of Science and Technology (NAIST)

[Information science](#) [Biological science](#) [Materials science](#)



In addition to research in the established academic fields of information science, biological science, and materials science, proactive efforts in these fields' interdisciplinary areas make it possible to generate international-level research results that will create the next generation of our society. Through advanced education based on these results, human resources who pursue science and technology with high aspirations as well as researchers who play leading roles in the international community are trained, contributing to the progress of science and technology and the development of society.

<https://www.naist.jp/en>



The university in close cooperation with Keihanna

Nara Medical University

[MBT](#) [Overcoming intractable diseases](#) [Overcoming COVID-19](#)



We have expanded community development based on Medicine, MBT(Medicine-Based Town) structure. We aim to contribute to society based on medical science by applying a vast store of knowledge of doctors, nurses, and others not only to the treatment of patients, but also to medically proper products, housing, and everything related to community development.

In order to accelerate the realization of MBT structure, General Incorporated Association MBT Consortium was established by centering around Nara Medical University.

At present, there are nearly 200 representative companies from all the industries in various fields in Japan participating in it. <https://www.naramed-u.ac.jp/university/english/index.html>



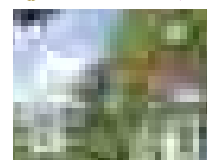
Nara Women's University

[Female top educational institution](#) [Gender equality](#) [Knowledge hub](#) [Female leader development](#)



We conduct advanced research to create culture and science through academic research, and education to nurture female human resources who will lead the next generation. In 2022, the first Faculty of Engineering was established at a women's university to produce the creative engineers needed by society. With a mission to expand opportunities for women to play an active role, we will walk at the forefront of the era of women's success in cooperation with related organizations and communities.

<http://www.nara-wu.ac.jp/nwu/en/>



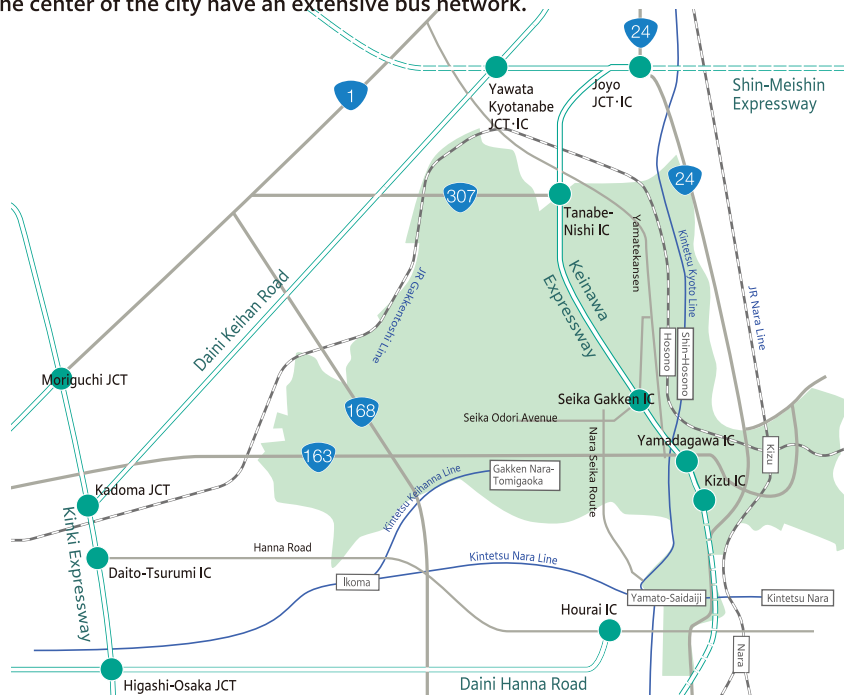
Urban Development

Major Roads and Rail Networks

Regarding expressways, the Shin-Meishin Expressway (scheduled to be fully operational in 2027), the Daini-Keihan Road (fully operational in 2010), the Keinawa Expressway (fully operational in 2000 in the Kyoto area [between the Joyo JCT/IC and the Kizu IC]), and the Yamato-Kita Road (fully-scale commercialization in 2018) have been constructed.

As for local roads, the Yamate Kansen from the Kyoto area and the National Route 163 Gakkentoshi Connection Road from the Osaka area have been improved to enhance access.

In terms of railroads, the Kintetsu-Keihanna Line (Ikoma - Gakken Nara Tomigaoka) opened in 2006, and the Seika and Nishikizu district in the center of the city have an extensive bus network.



Expressways

- Shin-Meishin Expressway
Joyo - Yawata Kyotanabe (Opened in 2017)
Otsu - Joyo (Scheduled to open in 2024)
Yawata Kyotanabe - Takatsuki (Scheduled to open in 2027)
- Daini Keihan Expressway (Fully opened in 2010)
- Keinawa Expressway
Kyoto Section (Opened in 2000)
Yamatokita Road (Fully opened in 2018)

Roads

- Yamatekansen
Nat. Rt. 1 - Seika-odori Street (Opened in 2018)
- Nat. Rt. 163 (Widened in Seika)
Inuidaninishi Intersection Overpass (Opened in 2023)
- Nat. Rt. 163 (Kizuhigashi Bypass)
Central Kizu - Higashichuosen Road (Opened in 2014)
Kizu River Bridge - JR Overpass (Opened in 2020)
- Nat. Rt. 163 (Kiyotaki - Ikoma Road)
Kiyotaki - Shimotawara (Widened to 4 lanes in 2013)
Takayama Intersection (Completed in 2015)
- Nat. Rt. 24 Joyo-Ide-Kizugawa Bypass
(Project launched in 2019)

Railways

- Kintetsu Keihanna Line
Ikoma - Gakken-Nara-Tomigaoka (Extended in 2006)
- JR Gakkentoshi Line
Nagao - Matsuiyamate (Second track added in 1989)
- JR Nara Line
Yamashirotaga - Tamamizu (Second track added in 2023)

For the Realization of Next-Generation Smart Cities

Efforts to advance the research and development of products and systems necessary for the formation of next-generation smart cities and their social implementations are being promoted through various projects.

In the "Smart Keihanna Project", which was adopted as a model project by the Ministry of Land, Infrastructure, Transport and Tourism, efforts are being made in the Seika and Nishikizu districts to introduce last one mile mobility and AI-based life support services. Also in the Tahara area, the Cabinet Office's "Future Technology Society Implementation Project" has been adopted, and efforts toward the implementation of a smart city with the participation of local residents with shopping and transportation as keywords are being developed through public-private partnerships.

The content and results of these efforts are being widely disseminated both domestically and internationally through various ways such as the Kyoto Smart City Expo.

Rich Nature, History, and Climate

Keihanna Science City has parks and green spaces strategically placed. It also has a rich “Satoyama” environment that residents are actively working to preserve and utilize.

In the Kizu Kita district, the government, citizens, companies, and others are working together to develop “Satoyama” activities.

The Prefectural Forest, developed by Osaka Prefecture with the aim of “coexistence of human and nature” has trails and suspension bridges centered around the waterfront.

Keihanna is also a treasure house of historical and cultural heritage that represents Japan, and restoration efforts are underway at “Heijo Palace” ruins, such as “Daigokuden” and “Suzaku-mon gate”, which reminds us the Nara period.

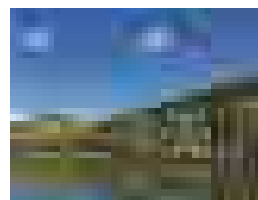
Keihanna Commemorative Park (Kyoto Prefectural Kansai Culture and Science City Commemorative Park)

[Strolling style garden](#) [Environment of Satoyama scenery](#)
[Cultural exchange base](#) [Nature experience](#) [Scenery of the four seasons](#)



The park was developed as part of the 1200th anniversary of the Heian-kyo Capital in commemoration of the construction of Keihanna Science City (Kansai Science City), and opened in April 1995. The park covers an area of 24.1 hectares, of which 15.1 hectares are dedicated to preserving the satoyama environment and expressing the culture and climate of Japan. As a hub of exchange in Keihanna Science City, this park is a place of relaxation for a wide range of people from all over the world to the local community, where they can experience the nature of the four seasons, culture, and art.

<https://keihanna-park.net/en/>



Nara Palace Site Historical Park

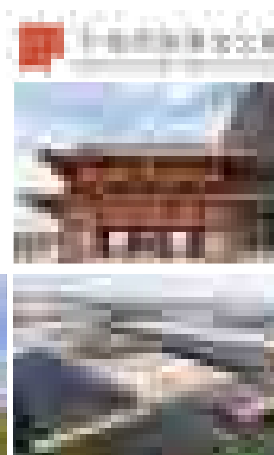
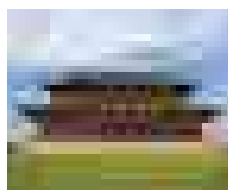
[Historical park](#) [Nara Palace Site](#) [Heijokyo](#) [Sightseeing](#) [History and culture](#)

Heijo Palace was the central part of Heijokyo, the capital of the Nara period. The Daigokuden, where the emperor appeared during national ceremonies, the Dairi, the residence of the emperor, and the Chodoin, which functioned as a place for government affairs, ceremonies, and banquets, and various government offices were built. Many people worked there.

In 2018, the "Suzakumon Hiroba", which has cafes and restaurants, a sales facility for specialty products from the prefecture, and a guidance facility for the entire Heijo Palace Ruins, was completed. In 2022, the first Daigokuden-in Daigokumon Gate was completed, allowing visitors to experience the scale of Heijo Palace.

(Government-managed site)<https://www.heijo-park.jp/>

(Prefecture-managed site)<https://www.suzakumon-heijokyo.com/>



Takayama Chikurinen Garden

[Takayama Bamboo Forest Garden](#) [Bamboo forest gardens](#) [Takayama](#) [Bamboo forests](#)
[Tea-ceremony rooms](#)

This garden was developed to familiarize people at large with the beauty and shape of tea utensils, tea scoops including Takayama tea whisks with about 550-year history, ladles, vases and incense containers, and knitting needles. It was opened to promote bamboo products, the traditional industry of Ikoma City, and increase the level of culture and education in the area. In the beautiful garden, you will also find a biotope with some 50 kinds of bamboos, a museum (Japanese-style room, training room and exhibition room) and the Chikubuan tea house.

<http://www.tikurinen.jp/>



Introduction of Location Facilities

Agriculture, Forestry and Fisheries	Construction	Food	Paper / Printing
Chemical / Chemical products	Pharmaceuticals	Plastic	Rubber / Rubber products
Glass / Earth and stone products	Steel / Non-ferrous metals	Metal products	Machinery
Electrical equipment	Transportation equipment	Precision / Medical equipment	Other manufacturing industries
Telecommunications	Commercial	Finance / Insurance	Government / Local government
Universities / Educational institutions	Research institutes	Cultural facilities / Parks	Service industries

Agriculture, Forestry and Fisheries

Spread Co., Ltd. Techno Farm Keihanna

[AgriTech](#) [Robotics and IoT](#) [Sustainable agriculture](#)
[FoodTech](#) [GLOBALG.A.P. Certification](#)

World's first large-scale automated vertical farm, Techno Farm Keihanna, delivers stable production of 3 tons of lettuce per day, regardless of the weather. At the on-site R&D facility we develop state-of-the-art cultivation and IT-related technologies.



Vertically farmed vegetables brand *Vegetus*

<https://spread.co.jp/en/>

Construction

KINDEN CORPORATION Kyoto Institute

[Electrical equipment](#) [Information and communication equipment](#)
[Air conditioning / sanitary equipment](#) [Interior equipment](#)

As an electrical engineering company of the Kansai Electric Power Group, we will play a part in the stable supply of electric power, strive to create excellent equipment and services such as buildings and factories, focusing on social contributions as well as developing our business as a comprehensive facility management company based on the three pillars of "energy", "environment" and "information & communication"

<https://www.kinden.co.jp/>

Construction

Sekisui House Ltd. Comprehensive Housing R&D Institute

[Building technology](#) [Lifestyle solutions](#)
[Research and development](#) [Performance testing](#)

The Comprehensive Housing R&D Institute engages in developing architectural technologies, assessing housing performance, and offering lifestyle proposals. In cooperation with other research facilities, the Comprehensive Housing R&D Institute conducts various R&D projects, including testing and evaluation of basic housing performance, development of new construction and building methods, and research on universal design and new environmental technologies, all of which focus on technologies to contribute to happiness, backed by lasting safety, security, comfort and health of housing.

<https://www.sekisuihouse-global.com/solutions/02/>

Construction

Daiwa House Industry Central Research Laboratory

[Construction](#) [Energy](#) [Environment](#) [Welfare](#) [Town planning](#)

We are conducting various research related to life and architecture in order to realize a better life and solve future social issues. There is also a tour facility (Reservation required.).

<https://www.daiwahouse.co.jp/lab/>

Food

Oriental Bakery Corporation, Kyoto Plant

[Functional food](#) [Hygiene](#) [Athlete](#) [Robotics](#) [Commercial bread](#)

As a commercial bread maker, we have the No. 1 share in Kansai area. In recent years, we have expanded into the Kanto region, aiming to become the No. 1 commercial bread maker in Japan.

<https://www.orientalbakery.co.jp/>

Food

Kyohka Food Co., Ltd. Nishimura Kohtarō Co., Ltd. Shiroyamadai Plant

[Matcha](#) [Green tea](#) [Functional food](#) [Health](#)

We will support the tea industry and other food producers throughout the country with food hygiene and quality control at the international standard level, and create world brands that Japan can be proud of.

<http://www.tea-nishimura.co.jp/>

Food

Kyoto Techno Center Kyoiseicha Co., Ltd.

[Functional food](#) [Green tea](#)

Kyoiseicha has been manufacturing and selling a variety of green tea, black tea and coffee products for over 180 years since its establishment in 1836. At Kyoto Techno Center, in addition to the mass production with the latest equipment, research and development work is actively conducted for innovation and creation of high value added tea products.

<https://www.kyoiseicha.co.jp/>

Food

Suntory World Research Center

[Superior flavor and taste](#) [Life science](#) [Botany](#) [Water science](#) [Sustainability](#)

A research and development base (completed in May 2015) that integrates the functions of basic research and technology development of the Suntory Group. The Institute of Safety Science Institute, Life Sciences, Suntory Global Innovation Center, Suntory Foundation for Life Sciences Bioorganic Research Institute, etc., moved in, and we are now working on the world's most advanced research in the fields of Pursuit of superior flavor and taste, Life science, Botany, Water science, Sustainability.

<https://www.suntory.co.jp/company/research/swr/>

Food

Genuine R&D Co., Ltd. Kyoto Institute

We are conducting research to discover new ingredients from natural products such as plants, animals and food residues and develop them as raw materials for cosmetics and functional foods. We also have a GMP-compatible supplement factory, where we undertake contract manufacturing such as food and cosmetics coordination.

<https://genuinerd.com/>

Food

Japan Juice Co., Ltd. Kyoto south center

[Agricultural activity](#) [Product development](#) [Fruit](#)

We process fruits ordered from all over Japan and develop new products. Based on our management philosophy of "Let's continue to eat good-tasting food", we aim to be a company that contributes to the revitalization of agriculture and is needed in the production areas.

<http://www.japan-juice.co.jp/>

Food

Boul'mich Co., Ltd. Hirakata Research Factory

Development, manufacture and sale of confectionery products.

<http://www.boulmich.co.jp>

Food

Morishita Jintan Co., Ltd. Osaka Techno Center

[Jintan](#) [Health care](#) [Drug development](#)
[Capsule technology](#) [Crude drug research](#)

As the center of research institutes that focus on researching new materials and developing new capsule products, it is the main factory equipped with laboratories and research facilities, manufacturing Jintan silver pills as well as filling and packaging products under our own brand.

<https://www.jintan.co.jp/>



Seamless capsule

Paper / Printing

UEROKU PRINTING CO., LTD.

[Luxury cosmetic package printing](#) [Cosmetics / Pharmaceuticals](#)
[Sustainable](#) [Global network](#) [Manufacturing close to your thoughts](#)

We put "new manufacturing from the customer's point of view" at the core of our management and do our best to provide highly reliable products and services. Our starting point is a heart of gratitude and a humble attitude. The thoughts of customers and consumers have evolved us, and we have received the blessing of materials from the earth. Building a sustainable society is now a universal wish, and we would like to face the challenges of our customers and society with a humble attitude.

<https://www.ue6.jp/>



Pulp Mold

Chemical / Chemical products

Cathy Chemical Industry Co., Ltd. Cathy Technical Center

With the motto of high-performance and highly safe manufacturing, we are a research and production base that develops and manufactures cosmetics, quasi-drugs, and new technologies. We aim to develop new materials and technologies and create high-quality products in pursuit of "creating beautiful bare skin" which we have cherished for 70 years since our founding.

<https://cathy.co.jp/>

Chemical / Chemical products

Technoble Co., Ltd.

[Cosmetics](#) [Quasi-drugs](#) [Functional ingredients](#)
[Research and development](#) [Safe and reliability](#)

Since our founding in 1961, we have been conducting R&D, manufacturing and sales of functional cosmetic materials. As a research-and-development-driven company, we have developed safe, secure, and unique high-quality functional cosmetic materials with the aim of contributing to the beauty of people around the world. We have received high praise from the domestic as well as international cosmetics market.

<https://www.technoble.co.jp/>

Pharmaceuticals

Taiko Pharmaceutical Co., Ltd. Kyoto Plant/R&D Center

Founded in 1946, we manufacture and sell consumer products. Our main products are a line of over-the-counter medicines called "Seirogan" for gastrointestinal medication, and a line of infection control products called "Cleverin" which uses chlorine dioxide. Our business at the Kyoto plant / R&D center involves investigating the safety and efficacy of our products, developing new items, improving our existing product line, and testing product performance.

<https://www.seirogan.co.jp/>

Food

Fukujuen CHA Experience Park

[Tea](#) [Culture](#) [Experience](#) [Tourism](#) [Research](#)

This park is a place where people can meet people, people can meet culture and culture can meet culture, over tea. We would like you to learn even more about the way of tea (Cha), which has been enjoyed and loved by people throughout the world. Enjoy lush green tea gardens and experience a tour of facilities, please.

<https://cha.fukujuen.com/>

Paper / Printing

Asahi Printing Co., Ltd. Kyoto Creative Park

[Packaging](#) [Labels](#) [Instruction leaflets](#) [Pharmaceuticals](#) [Cosmetics](#)

Asahi Printing Co., Ltd. manufactures and sells printed packaging materials for pharmaceuticals and cosmetics. At Kyoto Creative Park, we conduct research for and develop new products, which provide our customers with new value added features, and the technology and manufacturing methods that realize such features. Kyoto Creative Park also functions as part of Asahi's manufacturing bases for pharmaceutical and cosmetic packaging materials and contributes to faster delivery to our customers in West Japan. With the adoption of the cutting-edge manufacturing lines and production control system as well as the security system, the manufacturing environment of Kyoto Creative Park is established in high quality.

<https://www.asahi-pp.co.jp/>

Chemical / Chemical products

ADCOAT CO., LTD.

[Anti corrosion](#) [Improve workspace](#) [Plastic free](#) [VCI paper](#) [Oil free](#)

Do you have a problem with rust? We manufacture and sell the evaporative rust-proof paper adpack, which has been delivered to about 5,500 companies in Japan and overseas. Please consult with our rust prevention manager about rust.

<https://www.adpack.jp/en/>

Chemical / Chemical products

New Japan Chemical Co., Ltd. Kyoto R&D Center

[Creation](#) [Chemical](#) [Lubricants](#) [Plastic & coating materials](#) [R&D](#)

On the occasion of the 100th anniversary of our founding, we have established this laboratory as a base for achieving further growth. We will continue to refine our unique technologies, such as hydrogenation technology, and provide chemical materials that contribute to the development of society through co-creation with a variety of partners.

<https://www.nj-chem.co.jp/en/>

Pharmaceuticals

Santen Pharmaceutical Co., Ltd.

Nara R&D Center

[Ophthalmology](#) [R&D](#) [People Centricity](#) [Global expansion](#)

It was opened in 1996 to carry out cutting-edge research and development activities specializing in the field of ophthalmology. We aim to contribute to the realization of people's "Happiness with Vision" by providing valuable products and services to patients, consumers, and medical professionals around the world.

<https://www.santen.com/en>

Pharmaceuticals

Rohto Pharmaceutical Co., Ltd. Rohto Research Village Kyoto

[Health care](#) [Cosmetic](#) [Regenerative medicine](#)
[Functional food](#) [Global](#)

In the field of health care and beauty care, we are working on strengthening our fundamental technology, approaching cutting-edge regenerative medicine technology, taking initiation in anti-aging and preventive health care, and promoting joint research with domestic researchers.

<https://www.rohto.co.jp/>



Plastic

Atecs Co., Ltd. Kyoto Office Production Research and Development Center

Based on the concept of "creating art with plastic", we manufacture composite products that integrate high-performance resins, metals, and dissimilar materials by insert molding, and those products are widely used in industrial, in-vehicle, and consumer equipment packages. In particular, we are focusing on the development and manufacture of in-vehicle inverter parts and chargers for eco-cars such as EVs, HVs, PHVs, and FCVs.

<http://www.atecs-corp.co.jp/>

Plastic

Kyoto Plant R&D Center, Naigai Kasei Co., Ltd.

[Medical](#) [Cleaning](#) [Automation](#) [Molding](#) [Plastics](#)

We manufacture and provide stable supply of medical use plastic products that are clean and safe and respond to the current needs, to support medical care, and continue to play the role as a pipeline of life.

<https://www.naigai-kasei.jp/>

Glass / Earth and stone products

MIZUHO Co., LTD.

[Stone for precision machining](#) [Superfinishing stone](#)
[Grinding wheel](#) [Honing stone](#) [Precision machining](#)

Since its establishment in 1930, we have been manufacturing, selling and developing grindstones for precision machining. Mizuho Technical Lab develops fine-grained diamond grindstones and CBN grinding grindstones and demonstrates their performance in order to meet the needs for higher accuracy and efficiency. Recently, we are researching and developing the surface roughness of the work piece aiming at the nano level or less.

<http://www.kk-mizuho.jp>



Plastic

Sunceed Co., Ltd.

[IML Environment](#) [Food containers](#) [Weight reduction](#)
[Injection molding](#) [Eco-friendly](#)

This R&D facility manufactures convenient, functional and eco-friendly disposable food containers using the advanced IML (in-mold labeling) technology with the latest equipment.



IML container

<https://sunpla.co.jp>

Rubber / Rubber products

Kyoto Technical Center, Meiwa Rubber Co., Ltd.

The center was built to replace our Osaka former plant, which long served as our central manufacturing plant in western Japan. Integrating our cutting-edge research and development department and production department, it serves as our new manufacturing center in the western region. As a comprehensive rubber-roll manufacturer, we are devoted to developing and providing environmentfriendly products while keeping in mind the preservation of our precious planet for generations to come.

<https://www.meiwa-rubber.co.jp/>

Steel / Non-ferrous metals

Sohraku Industry Co., Ltd.

[Wire drawing dies](#) [Drawing dies](#) [Electrical discharge machining](#)
[Precision metal mold](#) [Carbide product](#)

Design, manufacture and sale of various wear-resistant metal mold and tools, mainly made of cemented carbide, and research and development of related technologies

<http://www.sohraku.com/>

Steel / Non-ferrous metals

TATSUTA Electric Wire and Cable Co., Ltd., Tatsuta Technical Center

[Functional film](#) [Functional paste](#) [Medical device parts](#) [Fine wire](#)

In the rapidly changing functional materials market, to accurately grasp the needs of our customers and continue to explore the seeds of the times, we have a "research laboratory" and a "functional film factory" that are the core of our research and development. We aim to become a top share supplier of products in advanced fields by establishing a system that can immediately produce new products that we have diligently developed.

<https://www.tatsuta.co.jp/>

Metal products

UEDA INDUSTRY CO., LTD.

[Metal stamping](#) [Mold design](#) [Mold production](#)

We work on press processing, mold design and manufacturing of bicycle parts, light electrical parts, building parts and all kinds of parts. In order to convey joy and excitement to the people who receive the products, we will break down technological barriers and pursue manufacturing that touches our hearts.



<https://www.uedaindustry.co.jp/>

Metal products

Askk Co., Ltd.

[Prototype parts](#) [High-mix low-volume](#) [Made-to-order](#) [Quick delivery](#)
[5-axis machine](#)

Processing of metal-resin prototype parts, processing of a wide variety, small lot of precision parts, short delivery processing, design, assembly and sales of wire stripping machines for recycling

<https://www.askk.co.jp/>

Metal products

KAWACHI KINZOKU CO., LTD.

[Precision processing](#) [Prototype development support](#) [Lot production](#)
[Vietnam factory](#)

We are ready to provide precisely cut products on a wide range of level, from a single prototype to mass production.

<http://www.kawachikinzo.co.jp>

Metal products

Kitamura Co., Ltd.

We are engaged in material fusing, can manufacturing, and machining of various machine parts including those of marine diesel engines construction machinery, and hydraulic equipment.

<http://www.kitamura-iron.co.jp>

Metal products

Kyoto Press Kogyo Co., Ltd.

[Metal processing](#) [Pressing](#) [Precision metal sheeting](#) [Cutting](#)

We not only design and manufacture press dies and press parts, but also manufacture cut/machined products by utilizing metal processing technology. We are constantly pursuing new processing technologies with the aim of improving quality and reducing prices of prototypes and mass-produced products made of iron as well as non-ferrous metals.

<http://kyoto-press.co.jp/>

Metal products

Sakamoto Seiki Co., Ltd.

[Metal pipe processing](#) [Water heater internal piping](#) [Gas stove internal piping](#)
[Piping for semiconductor equipment](#) [Petroleum equipment internal piping](#)

Material procurement, terminal processing, bending, joint welding, leak inspection, packing and shipping for internal piping of water heaters, gas stoves, kerosene heaters, bathrooms, etc. Materials: copper, stainless steel, iron, aluminum, brass, etc.



Examples of pipe processing

<http://www.sakamoto-seiki.co.jp/pc/>

Metal products

Kyoto Laboratory, Technoflex Corporation

Flexible hoses and expansion joints

<https://www.technoflex.co.jp/>

Metal products

MANYO TOOLS CO., LTD.

[Precision machining](#) [Tool holder](#)

We are a manufacturer of tool holders catering to various processing work for automobile, motorcycle, ship, and aircraft parts as well as machine tools. We are committed to using our own technology to develop and manufacture tool holders that cannot be made by other companies.



<http://www.manyo-tools.co.jp>

Machinery

ASHIDA MFG CO., LTD. Head Factory

We develop technology and devices to form Carbon Fiber Reinforced Plastic (CFRP), often used in aircrafts, and manufacture autoclaves for molding CFRP. We also develop, design and manufacture heat-treatment systems to meet the needs of various industries.

<http://www.ashida-mfg.co.jp/>

Machinery

WIST CO., LTD.

[Automation labor-saving equipment](#) [Original robot](#) [Robot system](#)
[Development of micromputer control equipment, etc.](#) [Development of production machinery](#)

Development, design and production of bottling machines, filling machines, cappers, filling and packaging lines, robot systems, automated labor-saving devices, original robots, motion & communication equipment, etc.



Co-Robotic Palletizer

<https://www.wist.co.jp/>

Machinery

Kowa Industrial Co., Ltd.

Design, manufacture and sale of drying devices for the textile, film, paper and food industries

<http://kowaindustry.com/>

Metal products

TAKAYOSHI KINZOKU CO., LTD.

[Precision processing](#) [Contract processing](#)

Development and manufacture of precision-machined parts and microfabricated parts (from design to assembly)



Joint parts of robots

<https://www.takayosi.co.jp/>

Metal products

HOGETSU KOGYO CO., LTD.

[Laser cutting](#) [Machining](#) [Welding](#) [Bending](#)

Steel plate cutting (thickness 2.3mm to 100mm), machining, bending, and welding are made through our in-house integrated production. We mainly manufacture parts for construction machinery manufacturers.



Construction machinery hydraulic cylinder parts

<http://www.hougetu.co.jp/>

Metal products

MOLITEC STEEL Co., LTD. Keihanna R&D Center

[Hardened steel strip](#) [Sheet metal processing parts](#) [Development products](#)
[Indoor laundry poles](#) [Automatic winding type ordinary charging stands for EV / PHEV](#)

We work to contribute to society through providing value to our customers through our steel. This center uses our core technologies such as press processing, spring processing, and heat-treatment processing to develop new products and technologies. We also design and manufacture dies used in the manufacturing department.



Roll-up type charging stand MEVS-06

<https://molitec.co.jp/english/index.html>

Machinery

Inoue Manufacturing Co., Ltd.

[Hospital / Elderly facility](#) [Reheating cart](#) [Hot / Cold serving car](#)
[Food safety and security](#) [Resolving labor shortage](#)

We manufacture and sell reheating carts and hot / cold serving cars for serving meals in hospitals and elderly facilities. Products with increased added value boast a high repeat rate and aim to contribute to society through "food safety and security".

<http://www.inoue-seisakusyo.co.jp>

Machinery

SEW-EURODRIVE JAPAN CO., LTD. Kyoto Factory

[Reduction gear](#) [Motors](#) [Geared motor](#) [SEW](#) [Industrial gear](#)

We are the Japanese subsidiary of SEW-EURODRIVE, a speed reducer manufacturer leading the world's motor market. SEW has assembly plants in 54 countries around the world. As a leading company with the largest market share in the field of geared motors. SEW provides a wide range of speed reducer based on its unique module systems. SEW is striving to produce high-quality products all over the world through the concentration of manufacturing processes and the decentralization of assembling processes.

<https://www.sew-eurodrive.co.jp/top.html>

Machinery

GNES Corporation

[Non destructive inspection](#) [Ultrasonic flaw detection](#) [Contract inspection](#)
[Air-coupled ultrasonic flaw detection](#) [Elastic modulus measurement](#)

Development, production and sales of off-line or in-line nondestructive inspection and ultrasonic flaw detection systems for spacecrafts, aircrafts, trains, trams, automobiles, etc. and contract inspection services of parts and materials thereof



Ultrasonic flaw detection equipment for hollow axes of bullet trains

<http://www.gnes.co.jp/en/>

Machinery

SHIMAKAWA SEISAKUSYO CO., LTD.

[VOC treatment](#) [Heat](#) [Drying](#) [Custom-made](#) [Battery material](#)

Our company's head factory handles the entire line from research to design to production of industrial dryers, heat treatment furnaces, exhaust emission purifiers (deodorization devices), oxide ethylene purification units and JIS thermal shock test devices. We can also make various order-made products.

<https://www.shimakawa.co.jp/>



Vacuum dryer

Machinery

HISAKA WORKS, LTD. Ikoma Plant

[Sterilizers](#) [Evaporator-concentrator system](#) [Jet dyeing machine](#) [Cheese dyeing/drying machine](#)

We are an industrial machinery manufacturer that provides plate heat exchangers, sanitization and sterilization equipment for food and pharmaceutical products, dyeing and finishing equipment, ball valves, etc. Our office is a base for process engineering and research and development businesses that develop, manufacture, and sell food equipment, pharmaceutical equipment, and dyeing and finishing equipment. We provide optimal and cutting-edge machinery, systems, and services to the clothing, food, housing, and pharmaceutical industries that manufacture products that form the basis of people's safe and comfortable lives.

<https://www.hisaka.co.jp/english/>



Hot water spray type retort sterilizer

Machinery

HIRANO TECSEED Co., Ltd.

[Coating](#) [Lithium-ion battery](#) [5G](#) [Sheet casting](#) [Industrial machinery](#)

HIRANO TECSEED is an industrial machinery manufacturer who is committed to creating valuable, cutting-edge technologies through a constant pursuit to perfect the expertise in the field of "heat and circulating air". The Kizugawa Plant is in charge of research on cutting-edge mechatronics technology to respond to the market. Since market needs change rapidly, we are working on the development of advanced mechatronics technology, in-house production and high precision of the heart of the machine, and new equipment.

<https://www.hirano-tec.co.jp/en/>

Electrical equipment

Icom Inc. Narayama Research Institute

[Amateur radios](#) [Commercial radios](#) [Maritime communications](#)
[Satellite communications](#) [IP trancivers](#)

We are engaged in R&D of wireless devices and wireless application devices that we manufacture and sell, R&D of various wireless communication methods, R&D of digital communication systems, and R&D of wireless application systems.

<https://www.icom.co.jp/>

Electrical equipment

Keihanna Technology Innovation Center, Omron Corporation

[Robotics](#) [Artificial intelligence](#) [Sensing](#) [Healthcare](#)
[Energy management](#)

Based on OMRON's core technology "Sensing & Control + Think", we aim to expand human possibilities and create a future in which people can play more active roles, by solving social issues with innovative technology.

<https://www.omron.co.jp/>

Electrical equipment

SHIN-JIGEN Inc.

[Hardtech](#) [Robotics](#) [building a business from the ground up.](#)
[Human assistance](#) [Well-being](#)

We provide comprehensive and hands-on support for business breakthroughs in the hard tech field. We deliver innovation by creating products and services of a new dimension.

<https://shin-jigen.co.jp/>



Wearable robot "SHIN-JIGEN MODEL UX"

Machinery

Dynamic Tools Corporation

[Machine tools](#) [Machine elements](#) [Automotive parts](#)
[Medical parts](#) [Environmental measure](#)

Focusing on product development of machine elements for ultra-precision machining such as automobile parts, aircraft parts, medical parts, and eco-friendly equipment, we carry out research and domestic / overseas export sales.

<https://www.dynamictools.co.jp/>



UV curable adhesive "Blue Photon" for processing medical parts

Machinery

Hitachizosen Corporation Environment Business Headquarters Business & Product Development Division

[Environment](#) [Waste water treatment](#) [Waste treatment](#)
[Water supply & sewage treatment](#)

Aiming to be a solution partner that contributes to the realization of a sustainable, safe and secure society, this office serves as our development base for new water treatment technology to realize our goal of creating a comfortable water environment.

<https://www.hitachizosen.co.jp/english/>

Machinery

Yoshiizumi Industry Corporation

[Food processing machines](#) [Slicers](#) [Washing machines](#)

We develop and sell various types of food slicers with the motto of "cutting various ingredients more practically and more beautifully." In recent years we have also been focusing on developing food processing machines to be used for such purposes as preparation, washing and drying, and offer them as systematic sets.

<https://yoshiizumi.com/>



"Super Fishmonger" fillet slicer

Electrical equipment

Kyoto Techno Center / Kyoto Research Center & Factory MG Co., Ltd.

[Industrial electronic equipment](#) [Reliability tests](#) [Anechoic chambers](#)
[Vibration inspection devices](#)

At this Center, we perform type tests on all product models, including not only new products but also design-changed products due to improvements, et. al. Equipped with 90 types of test equipment, including an anechoic chamber, we are working to improve the reliability of products useful for next-generation automated control.

www.mgco.jp

Electrical equipment

Kyocera Corporation, Keihanna Research Center

In order to construct a bright future for people and society (information, communication, mobility, environment/energy, medical/healthcare, etc.), we are making an endeavor to create materials and devices based on analysis and numerical analysis technologies.

<https://global.kyocera.com/>

Electrical equipment

NIDEC CORPORATION Nidec Keihanna Technology Center

In order to accelerate the growth of the NIDEC Group, we promote open innovation of advanced technologies by strengthening manufacturing capabilities and utilizing networks with universities, research institutions and the private sector.

<http://www.nidec.com/en/>

Electrical equipment

Burley Plus CO., LTD.

Our company serves as a production and research/design/development of the press dies and plastic molds. We manufacture electric connection parts used for indoor wiring, electric vehicles, LED lighting, solar panels, and many other products.

Transportation equipment

Shinwa Precision Machinery Co., Ltd.

[Precision processing](#) [Construction machinery](#) / [Hydraulic parts](#)
[Marine diesel engine parts](#)

We are mainly engaged in machining and assembly of precision hydraulic and marine diesel engine parts. We set up a factory in Vietnam for further growth and development under a management system which can create high value-added products with customer trust, reliability and satisfaction set as our motto.

<https://www.shinwpm.co.jp/english/>

Precision / Medical equipment

EC frontier Co., Ltd.

[Electrochemistry](#) [Analysis devices](#)

Manufacture and sale of measuring instruments and reaction cells/electrodes in the field of electrochemistry, and research and development of analysis devices applying electrochemistry

<https://ec-frontier.co.jp/>

Precision / Medical equipment

SHIMADZU Future Collaboratory

[Health care](#) [AI](#) [Robotics](#) [Whole analysis](#) [Bioscience](#)

SHIMADZU Future Collaboratory has built in Keihanna Science City to expand the program of innovation at Shimadzu Corporation. The new laboratory will further drive research and development. The goal is to develop meaningful solutions to the challenges of today and help transform the delivery of innovative products for the benefit of everyone.

<https://www.shimadzu.com/>



Multi-Device Biometric System
HuME (Human Metrics Explorer)

Precision / Medical equipment

Takazono Corporation Takazono Technology Incorporated

[R&D](#) [Packaging machines](#) [Pharmaceutical equipment](#) [Medical equipment](#) [Dispensing](#)

As a top-class pharmaceutical packaging machine manufacturer in Japan, we provide products to domestic and overseas markets. Research and development department of the Takazono Group is located in this office, where we are developing hardware and software for medical devices and related devices

<https://www.takazono.co.jp>

Other manufacturing industries

Ace Japan INC.

[Unused thinned wood](#) [Pallet](#) [Eco](#) [Recycle](#)

We manufacture transportation pallets from unused thinned wood. This product can contribute to environmental issues.



Study desk jointly patented with Okamura, a furniture manufacturer

<https://www.acejapan.biz/>

Electrical equipment

HIRAIDENKEIKI Co., Ltd. Reiwa-Keihanna Office

[Transformer](#) [Voltage transformer](#) [Current transformer](#)
[Operation transformer](#) [Zero phase current transformer](#)

We are a Japan's only 100-year-old manufacturer specializing in instrument transformers. In November 3rd year of Reiwa, we jointly received the Shibusawa Award sponsored by the Japan Electric Association together with electric power companies and switch makers.

<http://www.hiraidenkeiki.co.jp/>

Transportation equipment

SEIWA INDUSTRY CO., LTD. KIZUGAWA ECT CENTER

[Vehicle electrical components](#) [Battery cables](#)
[High-mix and small-lot manufacturing](#) [Monozukuri](#)

At Kizugawa ECT Center, we manufacture battery cables for construction machinery and agricultural machinery manufacturers. With our unique technology and production method that supports a wide variety of small lots, we have achieved high quality, high performance, and reliable delivery, and are highly acclaimed by the manufacturers.

<https://www.seiwa-oj.co.jp/>

Precision / Medical equipment

Will Co., Ltd.

[Semiconductors](#) [Electronic components](#) [Fine processing](#)
[Precision parts](#) [Lathe processing](#)

Development and manufacturing of fine electronic parts and components (semiconductor inspecting probes) and fine medical equipment parts.

<https://www.will-mfg.com/>

Precision / Medical equipment

SEIWA OPTICAL Co., Ltd.

[Development](#) [Semiconductor manufacturing equipment](#) [FPD](#) [Optics](#) [Mechatronics](#)

We utilize optical technology for industrial facilities such as manufacturing devices for semiconductors and FPDs, and develop and manufacture products that are ahead of the times. We manufacture products under a comprehensive management system from consultation on product specifications to development, manufacturing and quality control, to meet the customer needs.



Semiconductor and FPD exposure machine

<https://www.seiwaopt.co.jp/>

Other manufacturing industries

ICHIGUCHI CORPORATION

[Grinding](#) [Polishing](#)

We are engaged in development and production of abrasive cloth, non-woven cloth with abrasive coating, and abrasive tools made with diamond-coat polishing cloth. We provide unique products catering to the customer's specific demand, handling a wide variety of customer needs.

<https://www.ichiguchi.co.jp/>

Other manufacturing industries

ANGEL PLAYING CARDS MFG KYOTO CO., LTD. Kansai Science City Manufacturing and Research Center

[Global](#) [Playing cards](#)

ANGEL PLAYING CARDS MFG KYOTO CO.,LTD has produced numerous world firsts an unique items. These have now become a standard of the gaming industry, bringing new value to customers and game lovers.

<http://www.angelplayingcards.com>

Other manufacturing industries

KAJI CORPORATION

[Healthcare](#) [Rehabilitation](#) [GEL](#) [Cushion](#)

-Development, manufacturing and sales of products using EXGEL, proprietary developed material.
-EXGEL excels in texture, slow recovery feature, pressure redistribution ability, shape retainability and shock absorptability. It has earned a solid reputation in the healthcare and rehabilitation field as wheelchair cushions and bedsores prevention pads for operating tables. Its reliability and achievement have let to its application in various fields including hair dressing and cosmetology, automobiles, and motorsport, as well as overseas markets.

<https://exgel.jp/en/>



Wheelchair cushion for preventing bedsores using EXGEL

Other manufacturing industries

silex technology, Inc.

[Wireless solution](#) [Local 5G](#) [Network](#) [Telecommunication equipment](#) [Video transmission](#)

We are a research and development company with strengths are high-quality wireless technology and flexible customer support that we provide to customers' devices and systems in the industrial and commercial fields. In the co-creation space, we have local 5G base stations that allow equipment verification and products compatible with the latest wireless standards.

<https://www.silextechnology.com/>



Wi-Fi Access Point for Industrial Environments

Other manufacturing industries

SAWA CORPORATION

[Metal stencil cleaner](#) [Mask condition checker](#) [SMT](#)

With ultrasonic science as our core technology, we develop and propose products which meet customers' requirements. We mainly handle development, manufacture and sales of metal mask cleaning devices used for cream solder in the SMT board mounting process, cleaning devices of metal masks and mesh screens used in the process of manufacturing electronic components and semiconductors, and cleaning devices of gravure cylinders used in package printing.

<https://www.sawa-corp.co.jp/>



Metal mask cleaning device Sawa-ecobrid SC-AH100

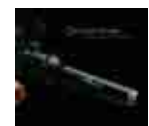
Other manufacturing industries

SOWA Technical Institution KEIHANNA

[FRP](#) [Plastic](#) [Bolts](#) [Polishing materials](#) [Grindstones](#)

SOWA has established its own research laboratory here in Keihanna, the new cultural capital, as a new first step to strengthen FRP material research and technological development capabilities. We will continue to work on the discerning manufacturing that is born from free thinking and passion.

<https://www.sowakasei.com/>



Fiber brush "Cristone Bristle"

Other manufacturing industries

Marutaka Co., Ltd.

[Rice bag](#) [Rice related products](#) [Good Design Award](#) ["MOTERUN PACK" \(No required plastic bag\)](#)

We deal in various products related to the distribution and sale of rice, mainly the packaging materials (rice packages). Under the basic policy of "SHAPING YOUR NEEDS, CREATE YOUR DREAMS", we design, develop, and sell our own eco-friendly products including the patented "Moterun Pack (No take-away bags are required)". We are at the forefront of the rice package industry.

<https://www.marutaka-pax.co.jp/>

Other manufacturing industries

TOEISANGYO CO., LTD.

[High function brush](#) [Electrophotographic equipment parts](#) [Electrostatic flocking](#) [Conductive fiber](#) [Pile fabric](#)

We develop, manufacture, and sell high-performance brushes such as cleaning brushes for electrophotographic devices (printers and multifunction devices), and textile parts that use special fibers such as conductive fibers.

<https://toeisangyo.com/>



Other manufacturing industries

KPS Industry Co., Ltd.

[Household well pump](#) [Various pump products](#) [Piston types of compressor](#) [Pump applied products and its products](#)

Development, planning and manufacture of embedded pumps and air pumps, as well as medical and living environment-related equipment

<http://www.kps-k.co.jp>

Other manufacturing industries

SAKAMOTO SEKKEI Technical Development Lab.

[Press molds design](#) [3D scan](#) [3D modeling](#) [Styrofoam model](#) [Product development support](#)

Our company, which started from automobile press die design, specializes in 3D shape design, 3D data creation, and modeling. It is possible to create drawings and models from actual objects and illustrations.

<https://www.s-sst.com>



Other manufacturing industries

SHOSEKIDO CO., LTD.

[Timber marking chalk](#) [Architectural mechanical pencil](#) [Calligraphy](#) [Ink](#)

Our company was founded in Nara Prefecture over 100 years ago during Taisho period.

We have focused on the development and quality improvement of the products such as ink used in construction work, in the fields of architecture and metallic material,

We constantly incorporate new technology and contribute to everyone's lives through our products. We will continue to manufacture products with sincerity.

<https://www.shosekido.co.jp/>



Architectural mechanical pencil, "Suzaku"

Other manufacturing industries

TAKAZONO LEAVES CO., LTD.

[Employment of people with disabilities](#) [Special subsidiary companies](#) [Reuse](#) [Eco-friendly](#)

Takazono Leaves Co., Ltd. is a special subsidiary of Takazono Co., Ltd. established for the employment of individuals with disabilities. Takazono Leaves prioritizes compassion and consideration for challenged individuals to ensure meaningful opportunities to contribute to society through gainful employment.

<https://www.takazono-leaves.co.jp/>

Other manufacturing industries

Nijo Maruhachi Co., Ltd. Nijo Maruhachi Ceremony Research Laboratory

[Uchikake](#) [Ceremony](#) [Traditional industry](#)

This lab conducts research into various ceremonies seen in human life from multifaceted perspectives, and develops and disseminates information on products and designs using traditional techniques handed down in Kyoto.

<http://www.nijo.co.jp>

Other manufacturing industries

NEURON PIPELINE REGILIENCE LABORATORY

[Lifeline earthquake engineering](#) [Earthquake resistance tests](#)

As the first research facility in Japan specializing in prevention of pipeline disaster such as ground shaking, uneven subsidence, displacement of faults, and liquefaction, we will continue to put forward ourselves daily for fostering researchers and conducting full-scale tests.

<https://www.neuron.ne.jp>



Other manufacturing industries

PROTEX·JAPAN Inc.

[Beauty](#) [Cosmetic](#) [Hair care](#) [OEM](#)
[Daily miscellaneous goods](#)

Research, development and manufacture of cosmetics and quasi-drugs, and sales consulting services



HAHONICO Keratex
Fiber shampoo
Fiber treatment
Fiber oil

<http://www.protexjapan.co.jp/>

Telecommunications

NTT Communication Science Laboratories

[AI](#) [Voice recognition](#) [Machine translation](#)
[Language acquisition & Development](#) [Data science](#)

As one of NTT's research and development centers, this facility focuses on the theme of future communications which "communicate to the heart," engaging in fundamental research in both information and human science, with the goal of establishing new theories and technologies that hold a deep understanding of people and information.

<https://www.rd.ntt/e/cs/>



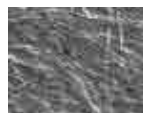
Commercial

SANSHO CO., LTD. Research Laboratory

[Natural polysaccharides](#) [Thickener](#) [Gelling agent](#)
[Functional paper](#) [net](#)

Sansho was founded in 1955 as a trading company specializing in natural water-soluble polymer agents, and has built a strong position in the polymeric additive field and other fields. In order to provide both products and technical services as the basis of its business, Sansho conducts quality checking tests and research development of applied technology.

<http://www.sansho.co.jp>



Surface photograph
of viscose processed
paper Saffron@

Commercial

Nihon Kizai Co., Ltd.

[Various FA equipment sales](#) [Operation of robot programming classes for children](#)
[UR core training](#) [Robot application development](#)
[Unit product](#)

We offer solutions for pneumatic equipment, industrial and collaborative robots, AI image processing, equipment, environmental products, and FA automation equipment.

<https://www.nihonkizai.co.jp/english/>



The center has a robot showroom,
lab (verification) room, seminar
room, etc. We propose systems
for applications that utilize robots.

Finance / Insurance

MUFG Bank, Ltd. Kansai Business Center

Completed in April 2018. As a business center of MUFG Bank, Ltd., this institution plays an important role in providing stable financial services.

<https://www.bk.mufg.jp/>

Universities / Educational institutions

Institute of Free Electron Laser, Graduate School of Engineering, Osaka University

This R&D facility has a high-intensity picosecond pulse laser that ranges from the visible to the far infrared region. It is built with a combination of a 55MeV electronic linear accelerator and a variety of wigglers (radiant emitter). The operation of the equipment is currently suspended, but is planned to resume in the near future.

<http://www.fel.eng.osaka-u.ac.jp>

Other manufacturing industries

Photon Co., Ltd.

[Electromagnetic field analysis](#) [Simulation](#) [Customization](#)
[Contract analysis](#) [Electromagnetic field analysis](#)

Our company develops and sells a line of electromagnetic field analysis software named PHOTO Series, which models products and parts using electromagnetic phenomena and then makes simulations on the computer.

<https://www.photon-cae.co.jp/>

Telecommunications

Keihanna Laboratory, Kagoya Japan Inc.

[Cloud platform](#) [Hosting server](#) [Mail server](#) [VPS](#)

We conduct research and development and information services that utilize the infrastructure and data center infrastructure of cloud service providers.

<https://www.kagoya.jp/>

Commercial

DAIICHI TECHNOS Co., Ltd.

Machine tools (IOT compound processing machines) and forging machines (press, sheet metal, forming machine), wholesale and retail machine repair (loaned to machine tool manufacturer), parts processing (MC, NC lathes), robots, automatic transfer device production

<https://www.d-technos.co.jp/>



Commercial

Japan Correspondence Machines and Tools Co., Ltd. Community Palace

With the theme of "information science to open a bright future," Community Palace provides training focused on technology for utilizing information science.

<https://nitsuki.co.jp/>

Government / Local government

Biotechnology Research Department, Kyoto Prefectural Agriculture, Forestry and Fisheries Technology Center

[Microbial utilization](#) [Crop development](#) [Breeding engineering](#) [Genetic engineering](#)
[Cell engineering](#)

With the collaboration of Basic Research Development which develop and explore basic and research-purpose seeds, and the Applied Research Department which works on using these seeds in the development of practical technology research, we aim to foster Kyoto's sake rice, black soy beans, and vegetables. We also aim to promote environmentally friendly agricultural technology utilizing micro-organisms (plant vaccines and plant growth-promoting microorganisms).

<https://www.pref.kyoto.jp/shigenken/>

Universities / Educational institutions

Osaka Prefectural Kitaosaka Advanced Vocational Training Center

We are a vocational training facility for the purpose of human resource development in industries of Osaka. As job seeker training, we provide training in 7 subjects related to machinery, control, and architecture. As training for employed people, we provide technical courses such as new employee training and technical training for companies. We also operate a human resources development center that rents facilities for skill tests and technical training, etc.

<http://www.pref.osaka.lg.jp/tc-kiosaka/top/index.html>

Research institutes

KEC Electronic Industry Development Center

[EMC test](#) [Product safety test](#) [Anechoic chamber](#)
[Seminar](#) [Engineering education](#)

In January 2024, KEC installed new large anechoic chambers that conform to the latest international standards and have capability of testing high-power products. We have provided EMC and product safety testing services, technical information in various fields, and the training for engineers.



Newly constructed large anechoic chamber for 10m method

<https://www.kec.jp/>

Research institutes

Nanto Economic Research Institute

[Think tanks](#) [Surveys and research](#) [Consulting](#) [Lecture training](#) [Bulletins](#)

A regional think-tank established with the financial support from Nanto Bank, we are engaged in the study of local economies, industry trends and business management. We provide study results to various quarters, in addition to holding seminars, employee training, and business management consultation handled by specialized staff.

<https://www.nantoeri.or.jp>

Cultural facilities / Parks

Nara Hokubu Hall Civic Cultural Hall

[Cultural facility](#) [Hall](#) [Conference room](#) [Course](#)

A variety of cultural projects such as lectures and concerts for all generations are held at the municipal culture hall located on the 3rd floor, with the aim of promoting culture, the arts, social exchange, and a stronger local community.

<https://www.narashi-shakyo.com/hokubu-hall/>

Service industries

Ion Technology Center Co., Ltd.

[Ion implantation](#) [Analysis](#) [Outsourcing](#)
[Research and development](#) [Compound semiconductor](#)

We are a professional group that offers consulting and technical development support in research and development, focusing on outsourcing services of ion implantation, material analysis and BPO.



Ion implantation, film deposition and annealing on into compound semiconductor etc.

<https://iontc.co.jp/en/>

Service industries

WILLCONSULTANT limited company

[Ground survey](#)

Our business is ground investigation, and our specialty is large dynamic cone penetration test. We have been conducting experiments and research since September 2010 under the guidance of the graduate school of Osaka Metropolitan University and Research Institute of Technology of Daiwa House Industry Co., Ltd. This test method was enacted in JIS (Japanese Industrial Standards) in 2018.



Soil quality verification system

<https://www.eonet.ne.jp/~willconsultant/>

Service industries

SEI Ikoma Seminar House

This facility contains large training rooms and lodging facilities available for corporate training programs and private social gatherings.

<http://www.midorinobunkaen.com/pages/sei-house.html>

Service industries

KANKYO EISEI YAKUHI Co., LTD. Laboratory of Kansai Science / Environmental Research Lab. of Public Health

[Facility hygiene management](#) [Regenerative medical care](#) [Clinical testing](#)
[Food testing](#) [Work environment measurement](#)

Our company's business is bio-risk management, and we carry out measures against nosocomial infections, clean room management, work environment measurement, food inspection, and evaluation of therapeutic agents using pathological model insects.

<https://www.kanyaku.co.jp>

Service industries

Environmental Research & Solutions Co., Ltd.

[Environmental survey and analysis](#) [Waste / Soil pollution](#)
[Environmental genetic analysis such as Covid-19\(non-living\)](#)
[Work environment/Odor measurement](#) [Water processing](#)

ER&S is a leading company of environmental chemistry founded in 1972. We will help improve any environmental issues using various solutions such as general chemical analysis, microanalysis of dioxins or PCB, soil pollution countermeasures, asbestos diagnosis, and even genetic analysis.

<http://www.ctiers.co.jp/>



Gene analyzer

Service industries

SHARP WORKERS UNION Seminar House and Recreation Park I & I LAND

It is a resort accommodation facility that can be used for various occasions such as meetings, training, accommodation, meals, banquets and parties. The types of accommodations vary from single rooms, twin-bedded rooms, rooms for groups and cottages. It is fully equipped with a hall, meeting/training room, restaurant and banquet hall.

<https://www.iiland.ne.jp/>

Service industries

Japan Speed Shore Co., Ltd.

[Lifeline support](#) [Proposal capability](#) [Technical capability](#)
[Problem-solving capability](#)

This is a research institute for various construction earth retaining equipment and various construction laser equipment. We contribute to society through the development and rental of equipment that ensures the safety of construction sites related to civil engineering.

<https://speedshore.co.jp/>

Service industries

Nihon Seigyo Co., Ltd.

[Embedded software](#) [Medical software](#)
[Communication / Measurement / Control](#) [Contract development](#)

We specialize in embedded software development for various control devices, and mainly engage in contract development of control software for FA equipment, measuring equipment, etc., and in-house development of medical software. In addition, we will answer your concerns about various software, such as analysis and customization of existing software.

<https://www.nseigyo.co.jp/>

Service industries

Hirakata Giken, Inc.

[Mechanical design](#) [Anti-vibration](#) [Non-Bren](#) [Bitappy](#) [Bita Block](#)

We have been engaged in mechanical design and manufacture since the establishment of our company in 1972. In 1995 we developed and put on the market a brand-new anti-vibration material Non-Bren, which can also be used as shock absorbing material and earthquake resistant fixing material. Our own branded product, the Non-Bren is employed for underfloor soundproofing and anti-vibration on the JR Shinkansen trains.

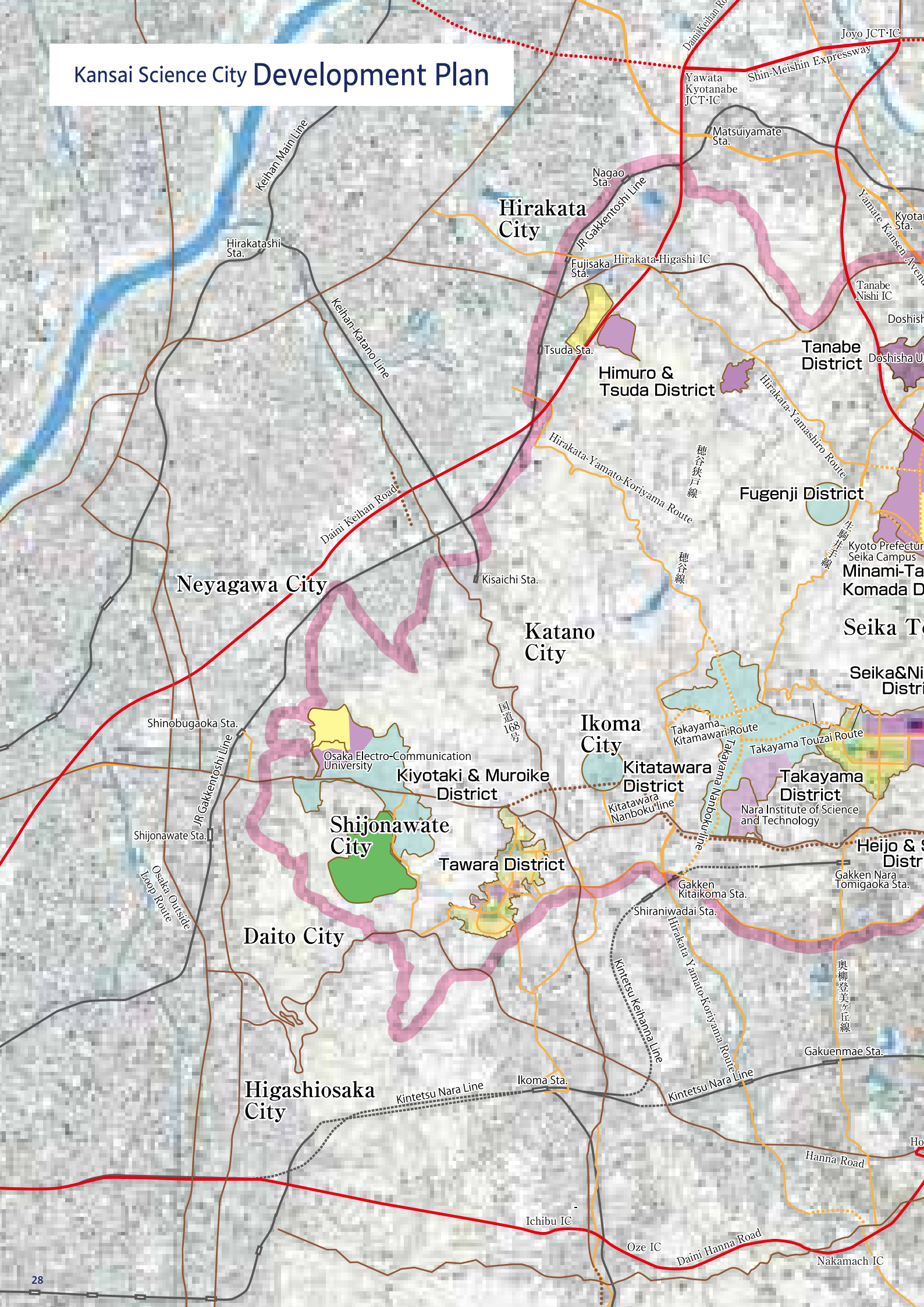
<https://www.hirakata-g.co.jp/>

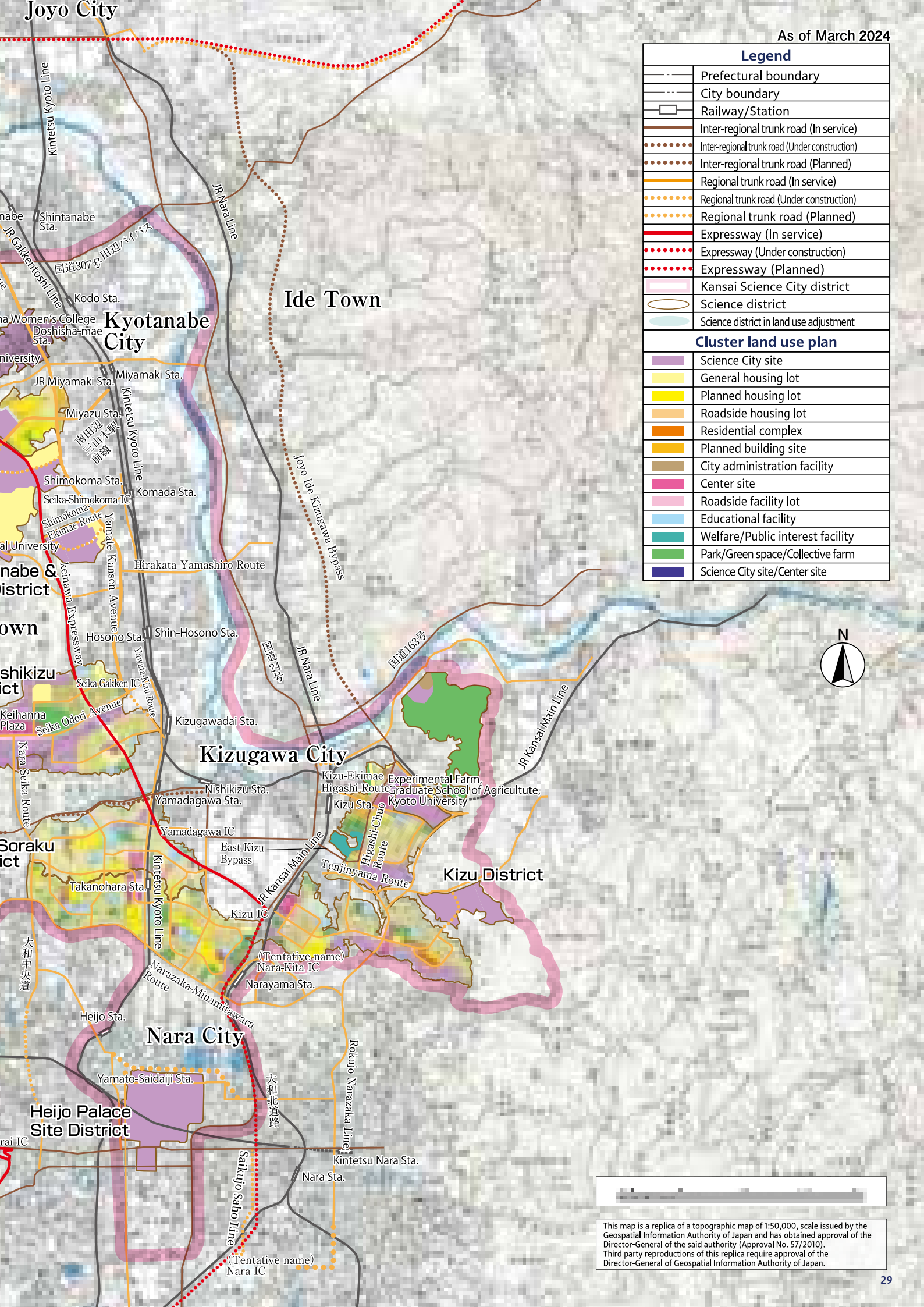
Facility Index

Facility Name	Category	Page
Ace Japan INC.	Other manufacturing industries	23
ADCOAT CO., LTD.	Chemical / Chemical products	19
Advanced Telecommunications Research Institute International (ATR)	Research institutes	11, 12
ANGEL PLAYING CARDS MFG KYOTO CO., LTD. Kansai Science City Manufacturing and Research Center	Other manufacturing industries	23
Asahi Printing Co., Ltd. Kyoto Creative Park	Paper / Printing	19
ASHIDA MFG CO., LTD. Head Factory	Machinery	21
Askk Co., Ltd.	Metal products	20
Atecs Co., Ltd. Kyoto Office Production Research and Development Center	Plastic	20
Boul'mich Co., Ltd. Hirakata Research Factory	Food	19
Burley Plus CO., LTD.	Electrical equipment	23
Cathy Chemical Industry Co., Ltd. Cathy Technical Center	Chemical / Chemical products	19
DAIICHI TECHNOS Co., Ltd.	Commercial	25
Daiwa House Industry Central Research Laboratory	Construction	18
Doshisha Center for the Promotion of Venture Business	Other	11
Doshisha University (Kyotanabe Campus·Gakken Toshi Campus)	Universities / Educational institutions	15
Doshisha Women's College of Liberal Arts	Universities / Educational institutions	14
Dynamic Tools Corporation	Machinery	22
EC forntier Co., Ltd.	Precision / Medical equipment	23
Environmental Research & Solutions Co., Ltd.	Service industries	26
Fukujuen CHA Experience Park	Food	19
Genuine R&D Co., Ltd. Kyoto Institute	Food	18
GNES Corporation	Machinery	21
HIRAIDENKEIKI Co., Ltd. Reiwa-Keihanna Office	Electrical equipment	23
Hirakata Giken, Inc.	Service industries	26
HIRANO TECSEED Co., Ltd.	Machinery	22
HISAKA WORKS, LTD. Ikoma Plant	Machinery	22
Hitachizosen Corporation Environment Business Headquarters Business & Product Development Division	Machinery	22
HOGETSU KOGYO CO., LTD.	Metal products	21
ICHIGUCHI CORPORATION	Other manufacturing industries	23
Icom Inc. Narayama Research Institute	Electrical equipment	22
Inoue Manufacturing Co., Ltd.	Machinery	21
International Institute for Advanced Studies	Research institutes	7
Ion Technology Center Co., Ltd.	Service industries	26
Japan Correspondence Machines and Tools Co., Ltd. Community Palace	Commercial	25
Japan Juice Co., Ltd. Kyoto south center	Food	18
Japan Speed Shore Co., Ltd.	Service industries	26
Keihanna Laboratory, Kagoya Japan Inc.	Telecommunications	25
KAJI CORPORATION	Other manufacturing industries	24
KANKYO EBESI YAKUHIN Co., LTD. Laboratory of Kansai Science / Environmental Research Lab. of Public Health	Service industries	26
KAWACHI KINZOKU CO., LTD.	Metal products	20
KEC Electronic Industry Development Center	Research institutes	26
Keihanna Commemorative Park (Kyoto Prefectural Kansai Culture and Science City Commemorative Park)	Cultural facilities / Parks	17
Keihanna Interaction Plaza·Keihanna Plaza Hotel	Cultural facilities / Parks	11
Keihanna Open Innovation Center @KYOTO (KICK)	Research institutes	10
KINDEN CORPORATION Kyoto Institute	Construction	18
Kitamura Co., Ltd.	Metal products	20
Kowa Industrial Co., Ltd.	Machinery	21
KPS Industry Co., Ltd.	Other manufacturing industries	24
Kyocera Corporation, Keihanna Research Center	Electrical equipment	22
Kyohka Food Co., Ltd. Nishimura Kohtarō Co., Ltd. Shiroyamadai Plant	Food	18
Kyoto Techno Center Kyoiseicha Co., Ltd.	Food	18
Biotechnology Research Department, Kyoto Prefectural Agriculture, Forestry and Fisheries Technology Center	Government / Local government	25
Kyoto Prefectural University (Seika Campus) Faculty of Agricultural and Food Sciences Farm / Industry-Academia-Government Collaboration Research Hub Facility	Universities / Educational institutions	14
Kyoto Press Kogyo Co., Ltd.	Metal products	20
Experimental Farm, Graduate School of Agriculture, Kyoto University	Universities / Educational institutions	14
MANYO TOOLS CO., LTD.	Metal products	21
Marutaka Co., Ltd.	Other manufacturing industries	24
Kyoto Technical Center, Meiwa Rubber Co., Ltd.	Rubber / Rubber products	20
Kyoto Techno Center / Kyoto Research Center & Factory MG Co., Ltd.	Electrical equipment	22
MIZUHO Co., LTD.	Glass / Earth and stone products	20
MOLITEC STEEL Co., LTD. Keihanna R&D Center	Metal products	21
Morishita Jintan Co., Ltd. Osaka Techno Center	Food	19
MUFG Bank, Ltd. Kansai Business Center	Finance / Insurance	25
Kyoto Plant R&D Center, Naigai Kasei Co., Ltd.	Plastic	20
Nanto Economic Research Institute	Research institutes	26

Facility Name	Category	Page
Nara Hokubu Hall Civic Cultural Hall	Cultural facilities / Parks	26
Nara Institute of Science and Technology (NAIST)	Universities / Educational institutions	15
Nara Medical University	Universities / Educational institutions	15
Nara National Research Institute for Cultural Properties	Research institutes	13
Nara Palace Site Historical Park	Cultural facilities / Parks	17
Nara Women's University	Universities / Educational institutions	15
Naragakuen University	Universities / Educational institutions	15
Kansai-kan of the National Diet Library	Cultural facilities / Parks	7
National Institute of Information and Communications Technology (NICT)	Research institutes	12
National Institutes for Quantum Science and Technology (QST) Kansai Institute for Photon Science	Research institutes	13
NEURON PIPELINE REGILIENCE LABORATORY	Other manufacturing industries	24
New Japan Chemical Co., Ltd. Kyoto R&D Center	Chemical / Chemical products	19
NIDEC CORPORATION Nidec Keihanna Technology Center	Electrical equipment	22
Nihon Kizai Co., Ltd.	Commercial	25
Nihon Seigyō Co., Ltd.	Service industries	26
Nijo Maruhachi Co., Ltd. Nijo Maruhachi Ceremony Research Laboratory	Other manufacturing industries	24
NTT Communication Science Laboratories	Telecommunications	25
Keihanna Technology Innovation Center, Omron Corporation	Electrical equipment	22
Oriental Bakery Corporation, Kyoto Plant	Food	18
Osaka Electro-Communication University (Shijonawate Campus)	Universities / Educational institutions	14
Osaka Prefectural Kitaosaka Advanced Vocational Training Center	Universities / Educational institutions	25
Institute of Free Electron Laser, Graduate School of Engineering, Osaka University	Universities / Educational institutions	25
Photon Co., Ltd.	Other manufacturing industries	25
PROTEX·JAPAN Inc.	Other manufacturing industries	25
Research Institute of Innovative Technology for the Earth	Research institutes	12
RIKEN	Research institutes	13
Rohto Pharmaceutical Co., Ltd. Rohto Research Village Kyoto	Pharmaceuticals	19
Sakamoto Seiki Co., Ltd.	Metal products	21
SAKAMOTO SEKKEI Technical Development Lab.	Other manufacturing industries	24
SANSHO CO., LTD. Research Laboratory	Commercial	25
Santen Pharmaceutical Co., Ltd. Nara R&D Center	Pharmaceuticals	19
SAWA CORPORATION	Other manufacturing industries	24
SEI Ikoma Seminar House	Service industries	26
SEIWA INDUSTRY CO., LTD. KIZUGAWA ECT CENTER	Transportation equipment	23
SEIWA OPTICAL Co., Ltd.	Precision / Medical equipment	23
Sekisui House Ltd. Comprehensive Housing R&D Institute	Construction	18
SEW-EURODRIVE JAPAN CO., LTD. Kyoto Factory	Machinery	21
SHARP WORKERS UNION Seminar House and Recreation Park I & I LAND	Service industries	26
SHIMADZU Future Collaboratory	Precision / Medical equipment	23
SHIMAKAWA SEISAKUSYO CO., LTD.	Machinery	22
SHIN-JIGEN Inc.	Electrical equipment	22
Shinwa Precision Machinery Co., Ltd.	Transportation equipment	23
SHOSEKIDO CO., LTD	Other manufacturing industries	24
silix technology, Inc.	Other manufacturing industries	24
Sohraku Industry Co., Ltd.	Steel / Non-ferrous metals	20
SOWA Technical Institution KEIHANNA	Other manufacturing industries	24
Spread Co., Ltd. Techno Farm Keihanna	Agriculture, Forestry and Fisheries	18
Sunceed Co., Ltd.	Plastic	20
Suntory World Research Center	Food	18
Taiko Pharmaceutical Co., Ltd. Kyoto Plant/R&D Center	Pharmaceuticals	19
Takayama Chikurinen Garden	Cultural facilities / Parks	17
Takayama Science Plaza	Other	11
TAKAYOSHI KINZOKU CO., LTD.	Metal products	21
Takazono Corporation Takazono Technology Incorporated	Precision / Medical equipment	23
TAKAZONO LEAVES CO., LTD.	Other manufacturing industries	24
TATSUTA Electric Wire and Cable Co., Ltd., Tatsuta Technical Center	Steel / Non-ferrous metals	20
Technole Co., Ltd.	Chemical / Chemical products	19
Kyoto Laboratory, Technoflex Corporation	Metal products	21
TOEISANGYO CO., LTD.	Other manufacturing industries	24
UEDA INDUSTRY CO., LTD.	Metal products	20
UEROKU PRINTING CO., LTD.	Paper / Printing	19
Will Co., Ltd.	Precision / Medical equipment	23
WILLCONSULTAT limited company	Service industries	26
WIST CO., LTD.	Machinery	21
Yoshizumi Industry Corporation	Machinery	22

Kansai Science City Development Plan





Legend	
	Prefectural boundary
	City boundary
	Railway/Station
	Inter-regional trunk road (In service)
	Inter-regional trunk road (Under construction)
	Inter-regional trunk road (Planned)
	Regional trunk road (In service)
	Regional trunk road (Under construction)
	Regional trunk road (Planned)
	Expressway (In service)
	Expressway (Under construction)
	Expressway (Planned)
	Kansai Science City district
	Science district
	Science district in land use adjustment
Cluster land use plan	
	Science City site
	General housing lot
	Planned housing lot
	Roadside housing lot
	Residential complex
	Planned building site
	City administration facility
	Center site
	Roadside facility lot
	Educational facility
	Welfare/Public interest facility
	Park/Green space/Collective farm
	Science City site/Center site



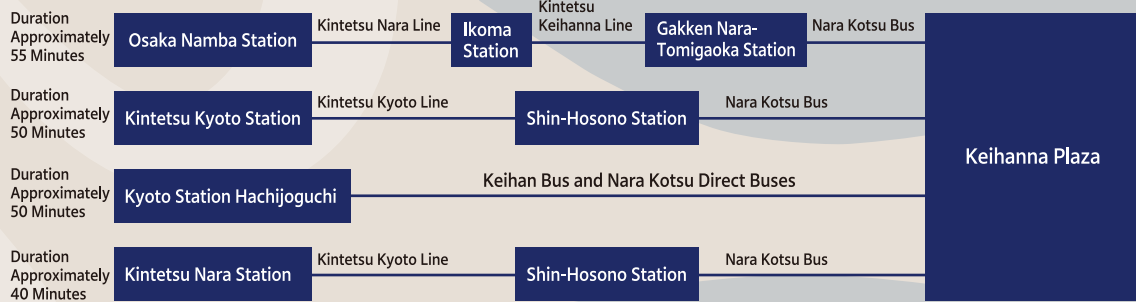
This map is a replica of a topographic map of 1:50,000, scale issued by the Geospatial Information Authority of Japan and has obtained approval of the Director-General of the said authority (Approval No. 57/2010). Third party reproductions of this replica require approval of the Director-General of Geospatial Information Authority of Japan.

Access to Keihanna Plaza

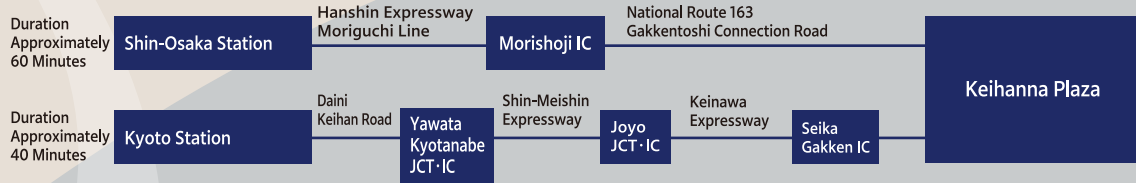
● From the Airport



● From Kyoto, Osaka, and Nara by Train and Bus



● From Kyoto and Osaka by Car



Keihanna Science City's Logo



“Keihanna” refers to the Kansai Science City. The logo of the city depicts a flying angel known as “Hiten”, who scatters flower petals, plays music and burns sweet incense while flying in the sky. The gentle curves in the logo represent the slopes of the Keihanna hills, and the three patterns symbolize “time” accumulated throughout the past, present, and future. The three patterns also represent the cooperation between Kyoto, Osaka, and Nara, or the collaboration between industry, academia, and government.

Public Foundation of Kansai Research Institute



Public Foundation of Kansai Research Institute
 Kansai Science City Construction Promotion Conference
 Laboratory Wing 3F, Keihanna Plaza
 (Keihanna Science City)
 1-7 Hikaridai, Seika-cho, Soraku-gun, Kyoto 619-0237
 TEL.0774-95-5105 FAX.0774-95-5104
<https://www.kri.or.jp/en/>