



# KANSAI SCIENCE CITY

KEIHANNA SCIENCE CITY

KYOTO

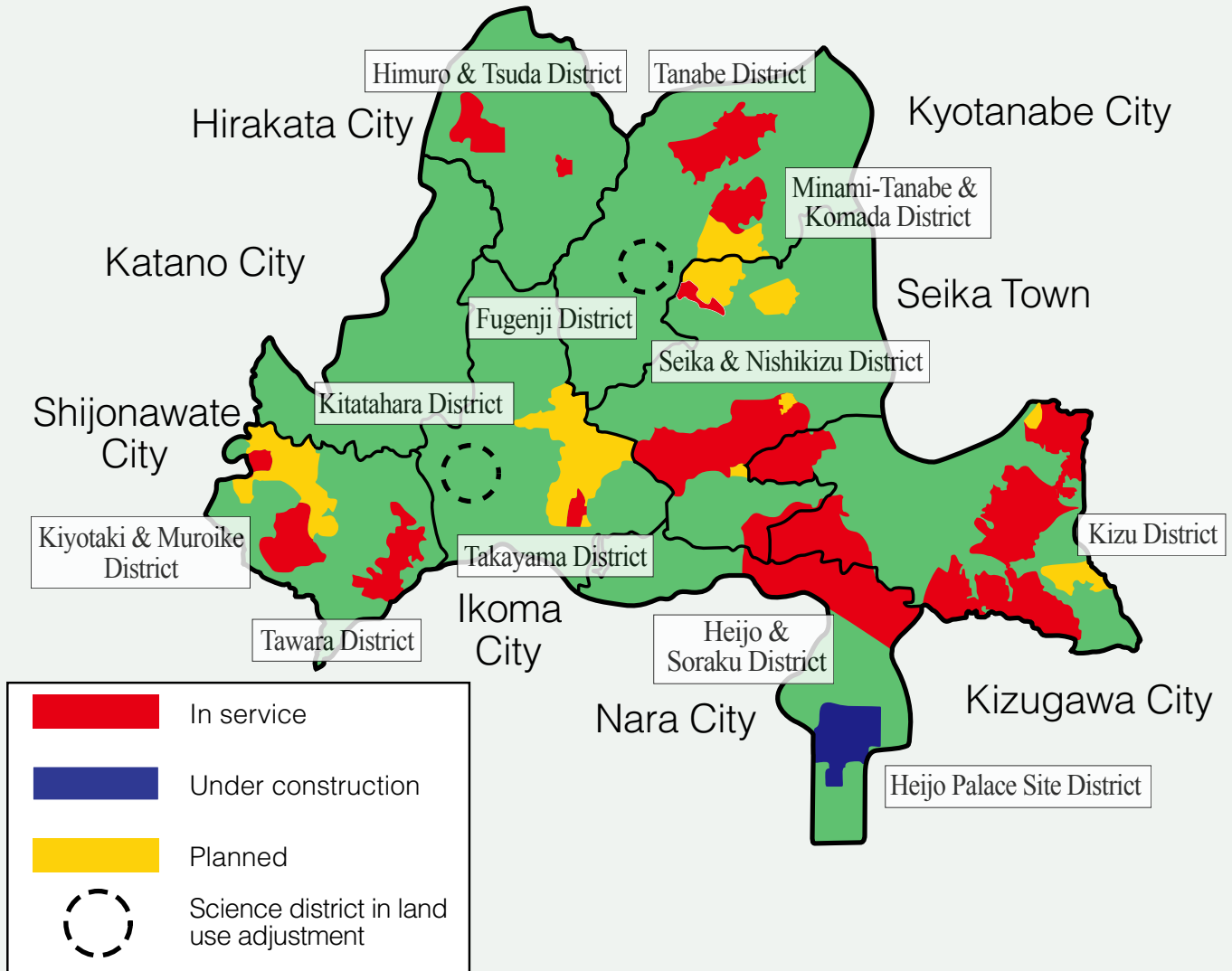
OSAKA

NARA

Facility Description

# Keihanna Science City

Development status of each cluster (As of March 2018)



## Guide to this pamphlet

**1** **01** Keihanna Plaza  
 (Kyoto Prefecture Keihanna Hall)  
 [Cultural & Research Interaction Facility]

As one of the core facilities in Kansai Science City, we own 162 units of rental laboratories, convention facilities, including a **3** hall that seats up to a thousand people, and a **4** 68-room hotel. We also provide our rental laboratory occupants with various business support services.

1-7 Hikaridai, Seika-cho, Soraku-gun, Kyoto  
 TEL.0774-95-**4** (Weekdays 9:00-17:30)  
 Hotel 0774-95-**4** (All day)  
<http://www.keihanna-plaza.co.jp/>



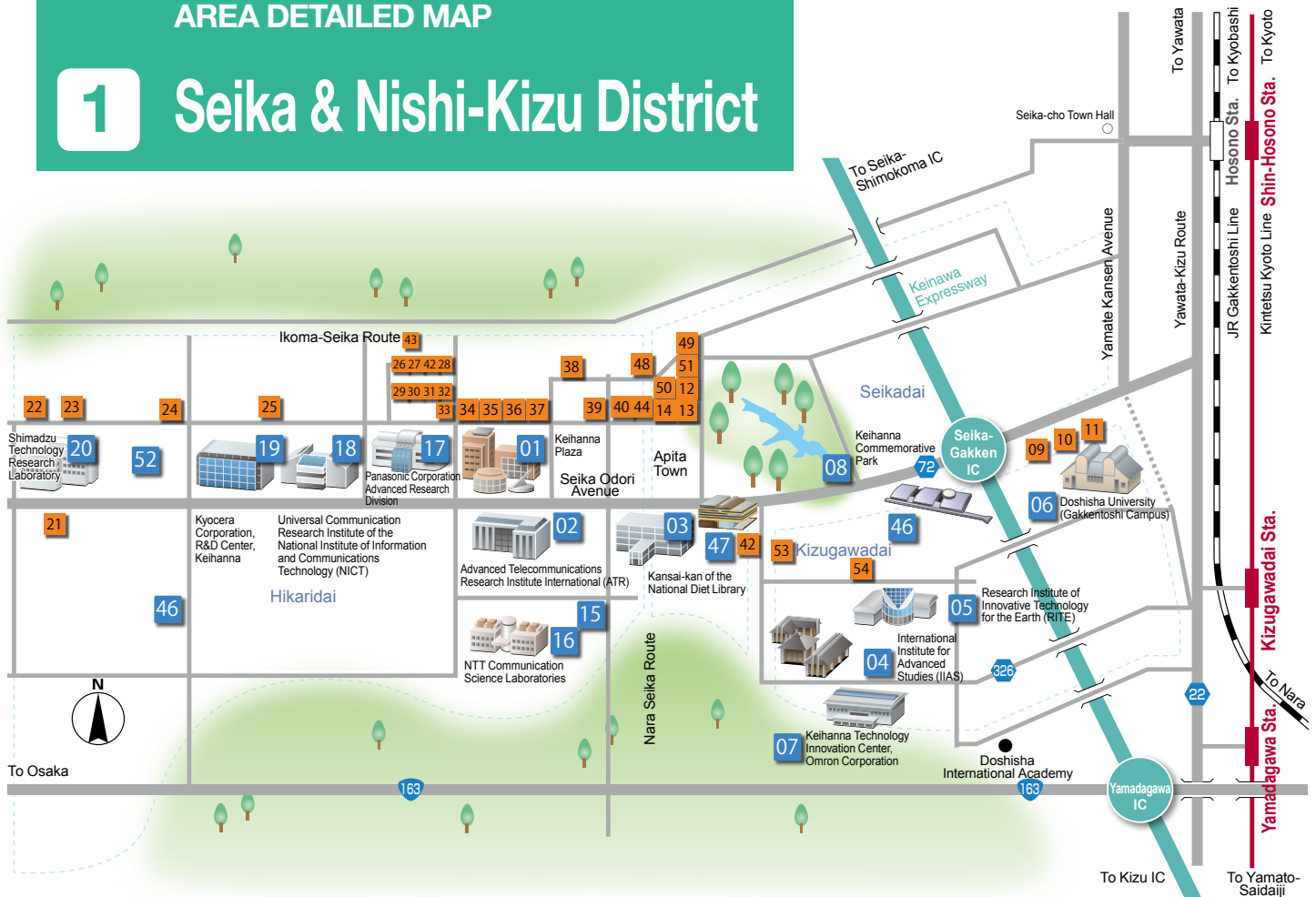
**1** Facility number  
 (Corresponds to the number on the illustrated map of the district)

■ Orange: Research and development oriented industrial facility  
■ Blue: University, research institution, cultural facility, interaction facility, etc.

- 2** Facility name
- 3** Facility outline
- 4** Address, phone number, and URL of the website
- 5** Photos of the facility and advanced research and development projects

## AREA DETAILED MAP

# 1 Seika & Nishi-Kizu District



### 01 Keihanna Plaza (Kyoto Prefectural Keihanna Hall) [Cultural & Research Interaction Facility]

As one of the core facilities in Kansai Science City, we own 162 units of rental laboratories, convention facilities, including a large hall that seats up to a thousand people, and a 68-room hotel. We also provide our rental laboratory occupants with various business support services.

1-7 Hikoridai, Seika-cho, Soraku-gun, Kyoto  
TEL.0774-95-5111 (Weekdays 9:00-17:30)  
Hotel 0774-95-0101 (All day)  
<http://www.keihanna-plaza.co.jp/>



### 02 Advanced Telecommunications Research Institute International (ATR)

ATR was founded as a collaboration between industry, academia and government with an aim to promote fundamental and original research in the telecommunication domain and, thereby, serve society as a whole. R&D activities are conducted primarily in the domains of neuroscience, robotics and wireless communication.

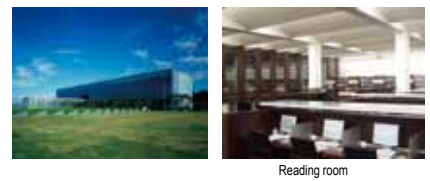
2-2-2 Hikoridai, Seika-cho, Soraku-gun, Kyoto  
TEL.0774-95-1111  
<http://www.atr.jp>



### 03 Kansai-kan of the National Diet Library

The Kansai-kan is a large-scale research library that supports innovation at the Science City on information. It is home to over 2 million domestic and foreign books, and over 10 thousand titles of magazines and newspapers for a total of over 14 million documents. The open, courtyard-facing reading room is available for use in looking through expansive ranges of scientific academic research and information, as well as digital journals. (Available to those 18 years of age and older. Those under 18 should seek prior permission.)

8-1-3 Seikadai, Seika-cho, Soraku-gun, Kyoto  
TEL.0774-98-1200(Automated Voice Guidance)  
<http://www.ndl.go.jp/en/kansai/index.html>



### 04 International Institute for Advanced Studies (IIAS)

The International Institute for Advanced Studies was founded in 1984 with the basic philosophy of "conduct research for the future and happiness of mankind". We will work together with stakeholders in and around Keihanna on our various activities in order to continue serving our roles as the intellectual hub and the core facility of the Keihanna Science City.

9-3 Kizugawadai, Kizugawa-shi, Kyoto  
TEL.0774-73-4000  
<http://www.iias.or.jp/>



### 05 Research Institute of Innovative Technology for the Earth (RITE)

We conduct research and development activities of innovative energy and environmental technologies as a center of excellence on the mitigation of global warming. Our focus areas are CCS technology, which captures CO<sub>2</sub> and stores it in an underground aquifer, biorefinery technology, research on strategies to respond to global warming, and inorganic membranes to be applied for dehydrogenating process.

9-2 Kizugawadai, Kizugawa-shi, Kyoto  
TEL.0774-75-2300  
<http://www.rite.or.jp>



### 06 Doshisha University (Gakketoshi Campus)

The Gakken Toshi Campus was opened, in 2006, as the core facility to promote cooperation between Doshisha University and its adjacent Gakken Toshi Hospital (Kansai Science City Hospital). The Gakken Toshi Campus was also built to help the Kyotanabe Campus take full advantage of its departments. The Gakken Toshi Campus carries out the integrated research of medicine and engineering, serving as a fundamental facility for paving the new academic frontiers for the 21st century.

4-1-1 Kizugawadai, Kizugawa-shi, Kyoto  
TEL.0774-65-6040  
<http://www.doshisha.ac.jp/>



### 07 Keihanna Technology Innovation Center, Omron Corporation

We focus on providing a next-generation level of safety, security, health and environment by improving our core technology, "Sensing & Control + Think."

9-1 Kizugawadai, Kizugawa-shi, Kyoto  
TEL.0774-74-2000  
[https://www.omron.co.jp/technology/r\\_d/lab/keihanna/](https://www.omron.co.jp/technology/r_d/lab/keihanna/)



### 08 Keihanna Commemorative Park (Kyoto Prefectural Kansai Science City Commemorative Park)

The Keihanna Commemorative Park is a Kyoto prefectural park founded to celebrate the establishment of the Keihanna Science City. It was also built as part of a project to celebrate the 12th centennial of the transfer of Japan's capital city to the ancient city of Heian (known today as the Kyoto City area) in 794. The Keihanna Commemorative Park, which is 24.1 hectares in area, opened in April 1995, and was designed to reflect Japanese culture and climate, in which you can enjoy the changing sceneries of the four seasons. The park serves as a communication space within the Keihanna Science City for visitors of diverse origins from all over the world. More than 600,000 people visit the park annually. The park also hosts various events throughout the year to offer visitors opportunities to enjoy nature and get familiar with Japanese culture and arts.

6-1 Seikadai, Seika-cho, Soraku-gun, Kyoto  
TEL.0774-93-1200  
<https://keihanna-park.net/>



Suikei-en Kangetsu-kyo



Suikei-en Momiji-dani

### 09 Inoue Manufacturing Co., Ltd.

A manufacturer and sales company of kitchen equipment (hot/cold food trolleys, thermal chamber, refrigerators, etc.).

7-4-3 Seikadai, Seika-cho, Soraku-gun, Kyoto  
TEL.0774-95-9055  
<http://www.inoue-seisakusyo.co.jp>



### 10 Keihanna Laboratory, Kagoya Japan Inc.

It provides information services and research and development utilizing the ISP infrastructure facilities and data center infrastructure.

TEL.075-252-9355  
<http://www.kagoya.jp>



### 11 Dynamic Tools Corporation

Dynamic Tools is engaged in research and sales of precision machine tools and environment-related equipment.

7-4-6 Seikadai, Seika-cho, Soraku-gun, Kyoto  
TEL.0774-98-0518  
<http://dynamictools.co.jp>



UV curing system for aircraft parts processing tools (Blue Photon)

### 12 Kyoto Technical Center, Meiwa Rubber Co., Ltd.

On January 27, 2012, the Kyoto Technical Center of Meiwa Rubber Co., Ltd. was built to replace our Osaka Plant, which long served as our central manufacturing plant in Western Japan. The Kyoto Technical Center, which combines our cutting edge Research and Development Department with our Production Department, now serves as our new manufacturing center in the Western region. As a comprehensive rubber-rolls manufacturer, we are devoted to developing and providing environmentally-friendly products that keep the long-term protection of the environment in mind; preserving our precious planet for generations to come.

9-1-13 Seikadai, Seika-cho, Soraku-gun, Kyoto  
TEL.0774-95-2000  
<http://www.meiwa-rubber.co.jp>



### 13 Toei Sangyo Co., Ltd.

Development, production and sales of brushes and related parts for electronic photo equipment (copiers, fax, printers), including cleaning brushes, anti-static brushes, and transcription brushes.

9-1-1 Seikadai, Seika-cho, Soraku-gun, Kyoto  
TEL.0774-98-4141  
<http://www.toeisangyo.jp>



Textile finishing of high-performance cleaning brushes

### 14 KPS Industry Co., Ltd.

Our company develops, plans and produces an array of medical and housing related equipment, including air pumps and other pumps to be installed in various devices.

9-1-3 Seikadai, Seika-cho, Soraku-gun, Kyoto  
TEL.0774-39-7021  
<http://www.kps-k.co.jp>



### 15 Silex Technology Inc. Keihanna Headquarters

Our R&D base supports the deployment of global business instruments, centering on our wireless technology.

By implementing a series of processes such as design, development, and production into this complex, we are able to maintain high quality and flexibly meet our customers' demands.

2-3-1 Hikaridai, Seika-cho, Soraku-gun, Kyoto  
TEL.0774-98-3781  
<http://www.silex.jp>



A wireless LAN module that allows secure Wi-Fi communication with ultra-low power

### 16 NTT Communication Science Laboratories

As one of NTT's research and development centers, this facility focuses on the theme of future communications which "communicate to the heart", engaging in fundamental research in both information and human sciences, with the goal of establishing new theories and processing technologies that hold a deep understanding of people and information.

2-4 Hikaridai, Seika-cho, Soraku-gun, Kyoto  
TEL.0774-93-5020  
<http://www.kecl.ntt.co.jp/rps/index-j.html>



Voice recognition research of multi-person conversation

### 17 Panasonic Corporation Technology Innovation Division

As a research lab for Panasonic HQ, this facility is engaged in research and development of innovative technologies in pursuit of its mission of pioneering new businesses that will contribute to a better society and world in ways that will wow their customers.

3-4 Hikaridai, Seika-cho, Soraku-gun, Kyoto  
TEL.0774-98-2502  
<http://panasonic.co.jp/>



### 18 National Institute of Information and Communications Technology

As the only information and communications focused public research institution, this facility is a driving force in research and development of Information and Communications Technology (ICT). In the Keihanna area, it works on drawing knowledge from data and information, applying data analysis technologies to social intelligence technologies, and overcoming barriers of language through research and development on multi-language speech translation technologies.

3-5 Hikaridai, Seika-cho, Soraku-gun, Kyoto  
TEL.0774-98-6300  
<http://ucri.nict.go.jp/> <http://astrec.nict.go.jp/>



Multilingual speech translation system "VoiceTra" (<http://voicetra.nict.go.jp/>)

19

### Kyocera Corporation, R&D Center, Keihanna

Kyocera carries out basic research and application development of optical and electronic devices, solar cells, etc. They are contributing to the progress and development of the information and telecommunication, environment, energy and life culture fields using crystal growth and thin film micromachining technologies.

3-5-3 Hikaridai, Seika-cho, Soraku-gun, Kyoto  
TEL.0774-95-2121  
<http://www.kyocera.co.jp/>



22

### Will Manufacturing Co., Ltd.

Development and manufacturing of ultrafine metal processed parts and semiconductor inspection jigs (contact probes).

3-7-1 Hikaridai, Seika-cho, Soraku-gun, Kyoto  
TEL.0774-95-3931  
<http://www.will-mfg.com>



25

### Living Area Environmental Health Laboratory Kansai Gakken Laboratory Kankyo Eisei Yakuhin Co., Ltd.

This hygiene management complex comprises an inspection wing, which is dedicated to food sanitary inspections and chemical analyses, and a biogenetics laboratory, equipped with sterilization and other operational functions. This advanced facility integrates inspections/analyses with operations of medical institutions, food and pharmaceutical factories and biospheres.

3-6-1 Hikaridai, Seika-cho, Soraku-gun, Kyoto  
TEL.0774-98-2130  
<http://www.kanyaku.co.jp>



28

### Sohraku Industrial Corporation

Design, manufacture and sale of various types of abrasion-resistant dies and tools, mainly made of cemented carbide. Also research and development of related technologies.

3-2-3 Hikaridai, Seika-cho, Soraku-gun, Kyoto  
TEL.0774-95-1808  
<http://www.sohraku.com>



20

### Technology Research Laboratory, Shimadzu Corporation

At this lab, Shimadzu develops cutting-edge scientific technologies and conducts studies into applying these technologies to analytical and measuring instruments, medical systems, aircraft equipment and industrial machinery.

3-9-4 Hikaridai, Seika-cho, Soraku-gun, Kyoto  
TEL.0774-95-1600  
<http://www.shimadzu.co.jp>



23

### Kyoto Laboratory, Technoflex Corporation

Flexible hoses and expansion joints.

3-7-4 Hikaridai, Seika-cho, Soraku-gun, Kyoto  
TEL.0774-98-2700  
<http://www.technoflex.co.jp>



26

### WIST Co., Ltd.

Development, design and production of automatic labor-saving machines, original robots and microcomputer control machines for the cosmetics, food, pharmaceutical and other industries.

3-2-26 Hikaridai, Seika-cho, Soraku-gun, Kyoto  
TEL.0774-98-6767  
<http://www.wist.co.jp>



Labeling robot

29

### Nihon Seigyo Co., Ltd.

Specializing in development of software incorporated into various controllers using a microcomputer, our focus is the commissioned development of control software such as factory automated instruments and measurement instruments, as well as research on software development technology.

3-2-11 Hikaridai, Seika-cho, Soraku-gun, Kyoto  
TEL.0774-95-0201  
<http://www.nseigyo.co.jp>



21

### Photon Co., Ltd.

Our company develops and sells a line of electromagnetic field analysis software named PHOTO Series, which models products and parts using electromagnetic phenomena and then makes simulations on the computer.

7-27-1 Hikaridai, Seika-cho, Soraku-gun, Kyoto  
TEL.0774-98-0696  
<http://www.photon-cae.co.jp>



24

### Kyoto Hikaridai Laboratory, Ichiguchi Corporation

We are engaged in development and production of abrasive cloth, non-woven cloth with abrasive coating, and abrasive tools made with diamond-coat polishing cloth. We provide unique products catering to the customer's specific demand, handling a wide variety of customer needs.

3-7-3 Hikaridai, Seika-cho, Soraku-gun, Kyoto  
TEL.0774-94-5217  
<http://www.ichiguchi.co.jp>



27

### Gnes Corporation

Development, manufacturing, sales, consulting maintenance, after-sales service, and Entrusting test using nondestructive inspection system

3-2-25 Hikaridai, Seika-cho, Soraku-gun, Kyoto  
TEL.0774-95-9701  
<http://www.gnes.co.jp>



30

### Hikaridai Technology Center, Takayoshi Kinzoku K.K.

A developer and manufacturer of precision processed parts and microfabricated parts (from design through assembly).

3-2-9 Hikaridai, Seika-cho, Soraku-gun, Kyoto  
TEL.0774-98-2617  
<http://www.takayosi.co.jp>



1

Seika &amp; Nishi-Kizu District

### 31 Kaji Corporation

- Development, manufacturing, and sales of products using proprietary developed material, EXGEL.  
- EXGEL excels in texture quality, slow recovery feature, pressure redistribution ability, shape retainability, and shock absorbability. It has earned a solid reputation in the field of healthcare and rehabilitation, as wheelchair cushions and a bedsores prevention pads for operating tables. Its reliability and achievement have led to its application in various fields (including hair dressing and cosmetology, automobiles, and motor sports), as well as an increase in overseas markets.

3-2-7 Hikaridai, Seika-cho, Soraku-gun, Kyoto  
TEL.0774-98-2633  
<http://www.exgel.jp/en/>



Wheelchair cushion  
"Owl REHA"

### 32 WILLCONSULTANT limited company

At Keihanna we are undergoing research and development on industry-university cooperation to provide ground investigation apparatus that is fast, inexpensive, and high quality. Looking towards i-Construction in the future, we will pioneer new areas in ground investigation and play an important role in the development of societal infrastructure.

3-2-5 Hikaridai, Seika-cho, Soraku-gun, Kyoto  
TEL.0774-27-6946  
<http://www.eonet.ne.jp/~willconsultant/>



Ground quality check system

### 33 Kowa Industrial Co., Ltd.

Design, manufacture and sale of drying devices for the textile, film, paper and food industries.

3-2-6 Hikaridai, Seika-cho, Soraku-gun, Kyoto  
TEL.0774-98-2170  
<http://kowa.nsf.jp>



### 34 KEC Electronic Industry Development Center

(1) This facility is equipped with anechoic chambers for testing domestic and international EMC (electromagnetic compatibility) standards, and carries out EMC and product safety tests.

(2) This facility also offers a wide range of technical information related to electronics, including EMC and product safety, and works to support and raise new engineers.

3-2-2 Hikaridai, Seika-cho, Soraku-gun, Kyoto  
TEL.0774-93-4563  
<http://www.kec.jp>



Large-sized 10m method  
anechoic chamber

### 35 Kyoto Nutritional Supplements & Laboratory Inc.

A long-established health food OEM operating for over 100 years. Their new factory was completed and outfitted with the latest equipment in 2009, merging the technologies of Nippon Flour Mills Co., Ltd. Food GMP and JAS organic certifications have been acquired. Health foods using local specialty ingredients are produced in small lots.

3-2-16 Hikaridai, Seika-cho, Soraku-gun, Kyoto  
TEL.0774-94-5121  
<http://www.kyoto-eiyo.co.jp>



### 36 NEURON JAPAN CO., LTD.

Neuron is creating next generation of plant systems utilizing our CORE technologies such as sophisticated craftsmanship (Pipe manufacturing, Forming and Welding) and skillful engineering (design, analysis, inspection & measuring).

3-2-18 Hikaridai, Seika-cho, Soraku-gun, Kyoto  
TEL.0774-95-3900  
<http://www.neuron.ne.jp>



### 37 Protex Japan Inc.

Research, development and manufacture of cosmetics and quasi-drugs. Technical and sales consulting services.

3-2-1 Hikaridai, Seika-cho, Soraku-gun, Kyoto  
TEL.0774-95-4800  
<http://protexjapan.co.jp>



### 38 Kyoto Plant R&D Center, Naigai Kasei Co., Ltd.

Molding of medical and pharmaceutical plastic containers.

1-2-6 Hikaridai, Seika-cho, Soraku-gun, Kyoto  
TEL.0774-98-2111  
<http://www.naigai-kasei.jp>



### 39 Sun Plastics Co., Ltd. Technology Center

Driven by the latest equipment, this R&D and manufacturing base makes "convenient and eco-friendly, highly functional disposable food containers" using the advanced IML (In-Mold Labeling) system technology.

1-2-9 Hikaridai, Seika-cho, Soraku-gun, Kyoto  
TEL.0774-39-8201  
<http://www.sunpla.co.jp>



IML margarine container

### 40 Atecs corp. Kyoto factory (R&D center)

Under the concept of "creating art works with plastic," we manufacture complex products integrating high-function resin, metal and other different types of materials by an insert mold. These products are widely applied to industrial uses, automotive parts and consumer devices. We particularly focus on development and manufacturing of automotive inverter parts and charging devices for such eco-cars as EV, HV, PHV, and FCV.

1-2-11 Hikaridai, Seika-cho, Soraku-gun, Kyoto  
TEL.072-967-1782  
<http://www.atecs.jp/en/>



### 41 ANGEL PLAYING CARDS MFG.CO.,LTD Kansai Science City Manufacturing and Research Center

ANGEL PLAYING CARDS MFG CO.,LTD has produced numerous world firsts and unique items. These have now become a standard of the gaming industry, bringing new value to customers and game lovers.

8-1-5 Seikadai, Seika-cho, Soraku-gun, Kyoto  
TEL.0774-98-6055  
<http://www.angelplayingcards.com>



### 42 SOWA Technical Institution KEIHANNA

SOWA established its own research lab here in Keihanna, the new cultural capital, as a new step in order to enhance research and development of FRP materials and further nurture its capability of R&D. We will continue to commit ourselves to manufacturing of special products born from free ideas and passion.

3-2-24 Hikaridai, Seika-cho, Soraku-gun, Kyoto  
TEL.0774-94-5551  
<http://www.sowakasei.com>



Development of ceramic fiber stones which fiber structure based on nano technology.

## 43 EC FRONTIER, Inc

Our company manufactures and sells electrochemical measuring instruments, reaction cells and electrodes. We are also engaged in research and development of electrochemical analysis devices.

3-2-30 Hikaridai, Seika-cho, Soraku-gun, Kyoto  
TEL.0774-39-8299  
<http://www.ec-frontier.co.jp>



## 46 Keihanna Open Innovation Center(KICK)

We focus on promoting "Open Innovation" in smart-community fields such as energy, health and medical care, food supply, infrastructure, education, and culture. To fulfill this goal, we aim to become a central facility equipped with all MICE functions to host global innovative research and development, as well as facilitating global communication.

9-6 Kizugawadai, Kizugawa-shi, Kyoto /  
7-5-1 Seikadai, Seika-cho, Soraku-gun, Kyoto  
TEL.0774-66-7545 FAX.0774-95-2220  
<http://kick.kyoto/>



## 49 SEW-EURODRIVE JAPAN CO,LTD Kyoto Operation Center

We are the Japanese subsidiary of SEW-EURODRIVE, a speed reducer manufacturer leading the world's motor market. SEW has assembly plants in 48 countries around the world. As a leading company with the largest market share in the field of geared motors, SEW provides a wide range of speed reducers based on its unique module systems. SEW is striving to produce high-quality products all over the world through the concentration of manufacturing processes and the decentralization of assembling processes.

9-1-11 Seikadai, Seika-cho, Soraku-gun, Kyoto  
TEL.0774-98-2750  
<http://www.sew-eurodrive.co.jp/>



## 52 Nidec Center of Industrial Science

In order to accelerate the growth of the NIDEC Group, we promote open innovation of advanced technologies by strengthening manufacturing capabilities and utilizing networks with universities, research institutions and the private sector.

3-9-1 Hikaridai, Seika-cho, Soraku-gun, Kyoto  
TEL.0774-81-1111  
<http://www.nidec.com/ja-jp/>



## 44 ADCOAT CO., LTD.

The VCI paper product we manufacture has been used and loved for over 50 years by major steel, automotive and cutlery companies. However, it is still little known by the public as it has been used mostly for export packaging. Our VCI paper can very simply prevent rust, which can cause big problems in the hot and humid Japan and other Asian countries. We hope our product will be of great help for all of you.

1-2-20 Hikaridai, Seika-cho, Soraku-gun, Kyoto  
TEL.0774-66-1911  
<http://www.adpack.jp>



## 47 Suntory World Research Center

The Suntory World Research Center, established in May 2015, is the Suntory groups' central research and development facility where their core technologies are combined. The center consists of the Health Care Science Center, Safety Science Institute, Suntory Global Innovation Center Limited, and Suntory Foundation for Life Sciences, all of which are cutting edge facilities for global research in the health science, microbiology, botany, water science, and greening the environmental fields.

8-1-1 Seikadai, Seika-cho, Soraku-gun, Kyoto  
TEL.0774-66-1110  
<http://www.suntory.co.jp/company/research/swrc/>



## 50 MOLITEC STEEL Co.,LTD. Keihanna R&D Center

We work to contribute to society through providing value to our customers through our steel. This center uses our core technologies such as press processing, spring processing, and heat-treatment processing to develop new products and technologies. We also develop and manufacture dies used in the manufacturing department.

9-1-15 Seikadai, Seika-cho, Soraku-gun, Kyoto  
TEL.0774-95-0125  
<http://molitec.co.jp/>



EV/PHV Cable Self-retracting charging station

## 53 MUFG Bank, Ltd. Kansai Business Center

Completed in April 2018. As a business center of MUFG Bank, Ltd., this institution plays an important role in providing stable financial services.

TEL.0774-93-0118  
<http://www.bk.mufg.jp/>



## 45 Kintetsu Cable Network Kyoto Corporation

Our business goal is to become the "Key-station for Community Needs" and fulfill our customers' information needs in the Southern areas of Kyoto. We are dedicated to helping create a richer and more convenient living environment for our customers by providing multi-channel and broadband communication services.

7-11 Hikaridai, Seika-cho, Soraku-gun, Kyoto  
TEL.0774-95-0082  
<http://www.kcn-kyoto.jp/>



## 48 Taiko Pharmaceutical Co.,Ltd. Kyoto Plant/R&D Center

Founded in 1946, we manufacture and sell consumer products. Our main products are a line of over-the-counter medicines called "Seirogan" for gastrointestinal medication, and a line of infection control products called "Cleverin" which uses chlorine dioxide. Our business at the Kyoto plant / R&D center involves investigating the safety and efficacy of our products, developing new items, improving our existing product line, and testing product performance.

1-2-1, Hikaridai, Seika-cho, Soraku-gun, Kyoto  
TEL.0774-98-2710  
<http://www.seirogan.co.jp/>



## 51 Orientalbakery KYOTO FACTORY&LAB

Since our foundation we have worked as a commercial bakery originally centered in the Kinki region and expanding in recent years to the Kanto region and all of Japan, providing products that match the times and the needs of our customers. In these rapidly changing modern times, we realized that it is important to quickly act to meet the demands of our customers, and that we needed to restructure and centralize the divisions within our company. As such we have established a new facility that also acts as a research facility for quality control and product management.

9-1-17 Seikadai, Seika-cho, Soraku-gun, Kyoto  
TEL.0774-98-6226  
[http://www.orientalbakery.co.jp](http://www.orientalbakery.co.jp/)



## 54 Spread Co., Ltd. Techno Farm Keihanna

This is the world's first indoor vertical farm that produces 30,000 heads of lettuce per day using factory automation. This next-generation agricultural production system can produce safe, high-quality lettuce every day regardless of the weather. There is also an R&D facility on-site, which develops advanced agricultural techniques.

9-5-5 Kizugawadai, Kizugawa-shi, Kyoto  
<http://www.technofarm.com/en>

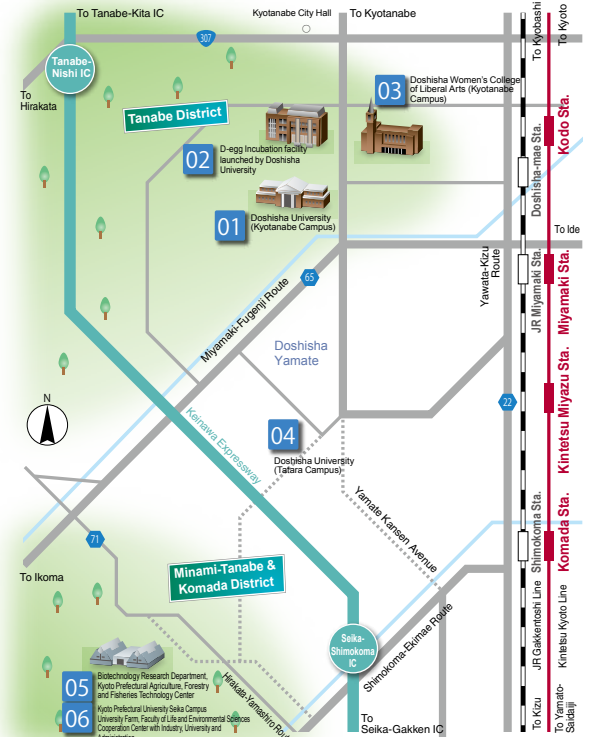


Vegetus

## AREA DETAILED MAP

2

# Tanabe District / Minami-Tanabe & Komada District



### 01 Doshisha University (Kyotanabe Campus)

Since the Kyotanabe Campus was established in 1986, the present Faculty of Science and Engineering has been integrated and moved; Faculty of Culture and Information Science, Faculty of Life and Medicine Science, Faculty of Health and Sports Science have been established; Faculty of Psychology and Faculty of Global Communications have been established and renovated; and Graduate School of Brains Science has been moved and renovated. The Imadegawa Campus serves as a fundamental educational facility for the liberal arts studies, and the Kyotanabe Campus for the "integrated studies of arts and science," "life," "information," "health," and "advanced science" fields.

1-3 Tataramiyakodani, Kyotanabe-shi, Kyoto  
TEL.0774-65-7010  
<http://www.doshisha.ac.jp>



### 02 D-egg Incubation facility launched by Doshisha University

D-egg is an incubation facility jointly operated by Kyoto Prefecture, the City of Kyotanabe, Doshisha University, and the Organization for Small & Medium Enterprises and Regional Innovation. With three types of rooms (prototype development rooms, experiment laboratory rooms and IT office rooms), the facility allows for a broad range of experimentation, research, and prototyping. Residents receive generous support from the City of Kyotanabe in the form of grants, as well as support for general management from incubation managers.

1 Kodo-Jizodani, Kyotanabe-shi, Kyoto  
TEL.0774-68-1378  
<http://www.smrj.go.jp/incubation/d-egg>



### 03 Doshisha Women's College of Liberal Arts (Kyotanabe Campus)

Opened in 1986, the Kyotanabe Campus is home to four faculties - Faculty of Liberal Arts, Faculty of Contemporary Social Studies, Faculty of Pharmaceutical Sciences, and Faculty of Nursing. Now as a general women's university with six faculties, eleven departments, one postgraduate certificate program, and five graduate programs across the Kyotanabe and Imadegawa Campuses, Doshisha Women's College of Liberal Arts is striving for even further growth.

97-1 Minami-Hokotate, Kodo, Kyotanabe-shi, Kyoto  
TEL.0774-65-8411  
<http://www.dwc.doshisha.ac.jp>



### 04 Doshisha University (Tatara Campus)

Utilizing the former site of Welsunpia Kyoto, we extend international exchange programs and extracurricular activities.

39-16 Tataranishi-Hirakawara, Kyotanabe-shi, Kyoto  
Tel.0774-68-1910  
<http://www.doshisha.ac.jp/tatara>



### 05 Biotechnology Research Department, Kyoto Prefectural Agriculture, Forestry and Fisheries Technology Center

With the collaboration of Basic Research Development which develop and explore basic and research-purpose seeds, and the Applied Research Department which works on using these seeds in the development of practical technology research, we aim to foster Kyoto's sake rice, red beans, and vegetables. We also aim to promote environmentally friendly agricultural technology utilizing micro-organisms (plant vaccines and lactic acid bacteria).

74 Koaza Oji, Oaza Kitainayazuma, Seika-cho, Soraku-gun, Kyoto  
TEL.0774-93-3525  
<http://www.pref.kyoto.jp/shigenken/>



### 06 Kyoto Prefectural University Seika Campus University Farm, Faculty of Life and Environmental Sciences Cooperation Center with Industry, University and Administration

Kyoto Prefectural University's Seika Campus consists of "Cooperation Center with Industry, University and Administration," which is designed to give back to the community by sharing the university's research outcomes not only with the people of Kyoto but also the people of Japan in general, and a "farm attached to the Faculty of Life and Environmental Sciences," where students are offered hands-on experience in farming practices while learning from nature. The total site area is approximately 16 ha, or 3.5 times larger than the Tokyo Dome. The "farm attached to the Faculty of Life and Environmental Sciences" is focused on upgrading the level of education and research. Meanwhile, the "industry-academia-government research facility" seeks to create university-launched venture businesses and new industries, and attract businesses as a new industry-academia-government research base specializing in plant factories, antibody engineering and other disciplines.

○ University Farm, Faculty of Life and Environmental Sciences  
74 Oji, Kitainayaduma, Seika-cho, Soraku-gun, Kyoto  
TEL.0774-93-3251  
<http://cocktail.kpu.ac.jp/agricul/ufarm/>



○ Cooperation Center with Industry, University and Administration  
84 Oji, Kitainayaduma, Seika-cho, Soraku-gun, Kyoto  
TEL.0774-93-3251  
[http://www.kpu.ac.jp/contents\\_detail.php?frmlid=2649](http://www.kpu.ac.jp/contents_detail.php?frmlid=2649)



## AREA DETAILED MAP

# 3 Kizu District



### 01 National Institutes for Quantum and Radiological Science and Technology

The institute promotes advanced photon research focused on highly intense lasers such as the J-KAREN-P laser and the X-ray laser, and also synchrotron radiation research using dedicated beamlines at the SPring-8.

At the Kizu district, based on the world's top class high peak power laser technology, cutting edge academic researches such as the laser acceleration of ions and electrons have been conducted as well as industrial and medical applications of lasers to create new innovations.

8-1-7 Umemidai, Kizugawa-shi, Kyoto  
TEL.0774-71-3000  
<http://www.kansai.qst.go.jp>



### 02 The Kids' Science Museum of Photons

This is Japan's first science museum designed around the theme of "light." You can learn and experience the wonders of light through hands-on exhibits, a full dome video projection theater, crafts and so on.

8-1-6 Umemidai, Kizugawa-shi, Kyoto  
TEL.0774-71-3180  
<http://www.kansai.qst.go.jp/kids-photon/>



### 03 TATSUTA ELECTRIC WIRE & CABLE CO., LTD TATSUTA Technical Center

TATSUTA Technical Center was established as a research laboratory to play a key role in research and development in the field of functional materials, where the global market is changing very fast. At the same time, advanced equipment and personnel have been deployed to meet the most demanding customer needs. Thus, TATSUTA has evolved into an advanced R&D-oriented company exploring the seeds of next generation technologies. Moreover, a functional film plant was constructed in the center, increasing the entire production capacity of TATSUTA to more than 1.5 million square meters per month, and this has enabled the company to ensure a speedy and stable supply of functional films.

6-5-1 Kunimidai, Kizugawa-shi, Kyoto  
TEL.0774-66-5550  
<http://www.tatsuta.com/jp/>



### 04 Rohto Pharmaceutical Co., Ltd. Rohto Research Village Kyoto

This facility works to strengthen basic technologies in health and beauty care, makes efforts in the advanced field of regenerative medicine, is involved in work on anti-aging and prevention, and fosters collaborative research between scientists domestically and around the globe.

6-5-4 Kunimidai, Kizugawa-shi, Kyoto  
TEL.0774-71-8770  
<http://www.rohto.co.jp/>



### 05 MANYO TOOLS CO., LTD

A manufacturer of tool holders catering to various processing work for automobile, motorcycle, ship, and aircraft parts as well as machine tools, we are committed to using our own technology to develop and manufacture tool holders that cannot be made by other companies.

6-4 Kunimidai, Kizugawa-shi, Kyoto  
TEL.0774-66-4246  
<http://www.manyo-tools.co.jp>



### 06 Kyoto Press Kogyo K.K.

Our company is engaged not only in the design and manufacture of press dies and the production of press parts but also the manufacture of cutting and machining products by using our metal processing techniques. We are exploring new technologies for metal processing, regardless of whether it is steel or other materials, to support the development of high quality and low priced products from the prototype manufacture to the mass production stage.

8-2-1 Kunimidai, Kizugawa-shi, Kyoto  
TEL.0774-72-3551  
<http://kyoto-press.co.jp/>



### 07 TAKAZONO LEAVES CO., LTD

Our company was founded as part of the initiatives for the 45th anniversary of the foundation of Takazono Corporation (formerly Takazono Industry Co., Ltd.) in order to create a society where those with disabilities can work alongside everyone else. We work to fully support employment-based independence for the disabled, while paying consideration to the environment.

8-2-5 Kunimidai, Kizugawa-shi, Kyoto  
TEL.0774-66-2988  
<http://www.takazono-leaves.co.jp>



## 08 Kyoto Techno Center M-System Co., Ltd.

This center performs type testing of all product models, not only new products but also products that have been redesigned for improvements, etc. Equipped with anechoic chambers and other equipment for conducting 90 kinds of tests, M-System is working to enhance the reliability of products that will be of benefit to the next generation in automated control.

8-2-3 Kunimidai, Kizugawa-shi, Kyoto  
TEL.0774-75-1172  
<http://www.m-system.co.jp>



## 09 Kyoto Research Center & Factory M-System Co., Ltd.

This is a research and development-oriented industrial facility which develops and manufactures industrial electronic measuring and control equipment. We are equipped with a demonstration facility for central air conditioning using our company's air conditioner controller as well as the latest production equipment to accommodate production of a wide variety, small volume and short delivery date.

8-2-4 Kunimidai, Kizugawa-shi, Kyoto  
TEL.0774-75-1815  
<http://www.m-system.co.jp>



## 10 Technical Laboratory Mizuho Co., Ltd.

Mizuho Co., Ltd. has engaged in the manufacturing, sales, and development of grindstones for precision sharpening since its foundation in 1930.

In order to satisfy the needs for more precise, more efficient products, we develop microparticle diamond grindstones and CBN grinding stones, using the cutting-edge evaluation machine at Mizuho Technical Laboratory. We are also developing a grindstone that enables nano-level or finer mirror surface finishing.

7-30-1 Kunimidai, Kizugawa-shi, Kyoto  
TEL.0774-66-1141  
<http://www.kk-mizuho.jp>



## 11 Asahi Printing Co., Ltd. Kyoto Creative Park

Asahi Printing Co., Ltd. manufactures and sells printed packaging materials for pharmaceuticals and cosmetics. At Kyoto Creative Park, we conduct research for and develop new products, which provide our customers with new value-added features, and the technology and manufacturing methods that realize such features. Kyoto Creative Park also functions as part of Asahi's manufacturing bases for pharmaceutical packaging materials and contributes to faster delivery to our customers in East Japan. With the adoption of the cutting-edge manufacturing lines and production control system as well as the security system, the manufacturing environment of Kyoto Creative Park is established in high quality.

6-3-1 Kunimidai, Kizugawa-Shi, Kyoto  
TEL.0774-75-1911  
<http://www.asahi-pp.co.jp/>



## 12 Experimental Farm, Graduate School of Agriculture, Kyoto University

The Kyoto University affiliated farm spans 24.6ha and uses brand new facilities and equipment to carry out agricultural studies and research, as well as the production of agricultural products. It also operates as a demonstration base for the development of next-generation agricultural technologies that will provide for a bountiful future, and is assembled as a Green Energy Farm which makes use of renewable energies in the production of these products.

4-2-1 Shiroyamadai, Kizugawa-shi, Kyoto  
TEL.0774-94-6405  
<http://www.farm.kais.kyoto-u.ac.jp/>



## 13 Japan Juice Co., Ltd. Kyoto south center

Our company processes fruits from all across Japan and works on the development of new products. Operating under a philosophy of continuing to provide delicious foods, we aim to be a company that can contribute to and be an integral part of agricultural activities.

8-3 Kunimidai, Kizugawa-shi, Kyoto  
TEL.0774-72-2366  
<http://www.japan-juice.co.jp/>



## 14 Marutaka Co., Ltd.

We deal in various products related to the distribution and sale of rice, mainly the packaging materials (rice packages).

Under the basic policy of "SHAPING YOUR NEEDS, CREATE YOUR DREAMS", we design, develop, and sell our own eco-friendly products including the patented "Moterun Pack (No take-away bags are required)". We are at the forefront of the rice package industry.

8-1-23 Umemidai, Kizugawa-Shi, Kyoto  
TEL.0774-71-8408  
<http://www.marutaka-pax.co.jp/>



## 15 SEIWA INDUSTRY CO.,LTD. KIZUGAWA ECT CENTER

At Kizugawa ECT Center, we manufacture cables for batteries of construction machinery makers and agricultural machinery manufacturers.

With our own technology and manufacturing method to cope with multi-item small lot production, we achieve high quality and high performance, as well as guaranteed delivery time, with excellent reviews from our customers.

8-2-1 Umemidai, Kizugawa-Shi, Kyoto  
TEL.0774-74-8573~4  
<http://www.seiwa-oj.co.jp>



01

## Sekisui House Ltd. Comprehensive Housing R&D Institute

This institute consists of the "Technology R&D Institute," which pursues research and development into Sekisui House's proprietary architectural technologies, as well as the experience-based facilities, "Nattoku Kobo (Studio)" and "Kansai Sumai no Yume Kojo (Dream Factory)" which use human experiences to create the perfect homes, and stand at the front line of home research.

6-6-4 Kabutodai, Kizugawa-shi, Kyoto  
TEL.0774-73-1111

<http://www.sekisuihouse.com/support/sup01.html>



02

## JEUGIA Culture Center Ecole

JEUGIA offers various culture classes that view music as culture, and develops software for new music and culture classes. Approximately 110 classes in music and other subjects are offered for small children to seniors.

6-6-3 Kabutodai, Kizugawa-shi, Kyoto  
TEL.0774-73-0715

<http://culture.jeugia.co.jp/>



03

## Fukujuen CHA Experience Park

This park is a place where people can meet people, people can meet culture and culture can meet culture, over tea. We would like you to learn even more about the way of tea (Cha), which has been enjoyed and loved by people throughout the world. Enjoy lush green tea gardens and experience a tour of facilities.

3-1-1 Saganakadai, Kizugawa-shi, Kyoto  
TEL.0774-73-1200

<http://www.fukujuen.com/company/cha.html>



06

## Nijo Maruhachi Co., Ltd. Nijo Maruhachi Ceremony Research Laboratory

This lab conducts research into various ceremonies seen in human life from multifaceted perspectives, and develops and disseminates information on products and designs using traditional techniques handed down in Kyoto.

3-1-5 Saganakadai, Kizugawa-shi, Kyoto  
TEL.0774-73-1000

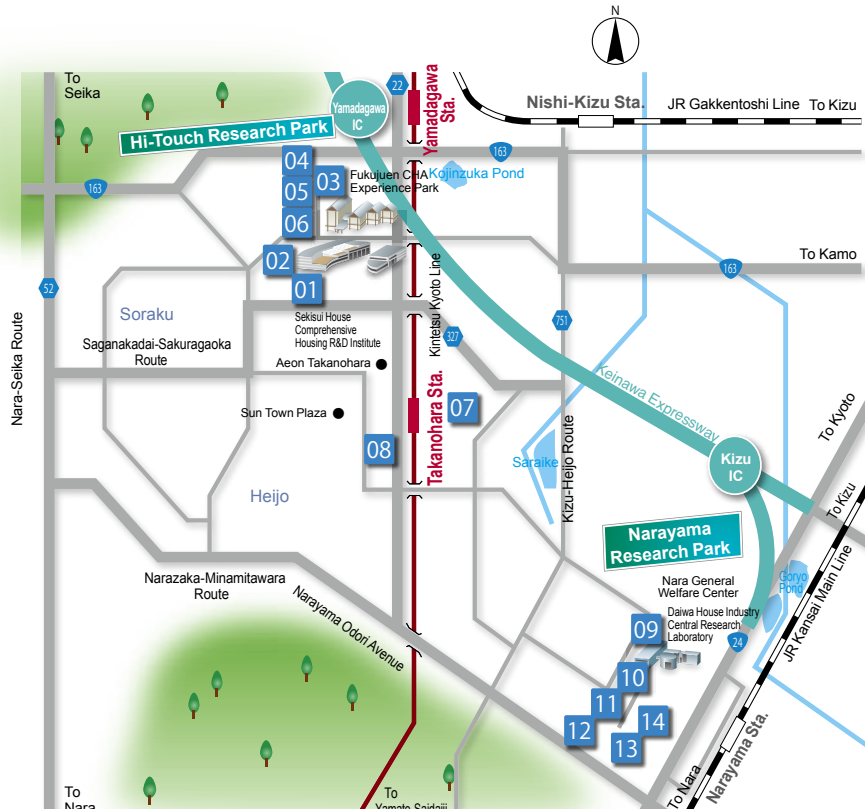
<http://www.nijo.co.jp>



4

## AREA DETAILED MAP

# Heijo & Soraku District



04

## Japan Correspondence Machines and Tools Co., Ltd. Community Palace

With the theme of "information science to open a bright future," Community Palace provides training focused on technology for utilizing information science.

3-1-4 Saganakadai, Kizugawa-shi, Kyoto  
TEL.0774-34-5988

<http://www.nitsuki.co.jp>



07

## Environment Business Headquarters Business & Product Development Division Hitachizosen Corporation

With the goal of establishing a recycling-based society, our business operations focus on the environment and green energy, the improvement of social infrastructure, and disaster prevention. This office serves as our development base for new technology, mainly for sludge treatment centers and sewer systems, to realize our goal of creating a comfortable water environment.

9-1 Saganakadai, Kizugawa-shi, Kyoto  
TEL.0774-71-8745

<http://www.hitachizosen.co.jp>



05

## Kinden Corporation Kyoto Institute

Kinden plays a key role as an integrated facility company for energy, environment, communications, and interior at the Kyoto Research Center. Kinden earns its respect and trust through its continuous endeavors in customer satisfaction.

3-1-1 Saganakadai, Kizugawa-shi, Kyoto  
TEL.0774-73-0730

<http://www.kinden.co.jp>



08

## Nara Hokubu Hall Civic Cultural Hall

A variety of cultural projects such as lectures and concerts for all generations are held at the municipal culture hall located on the 3rd floor, with the aim of promoting culture, the arts, social exchange, and a stronger local community.

1-1-4 Ukyo, Nara-shi, Nara (Hokubu Hall 3F)  
TEL.0742-71-5747 (Municipal culture hall)

<http://www.hokubu-hall.city.nara.nara.jp>



4

**09 Daiwa House Industry  
Central Research Laboratory**

Given the Daiwa House Group's interest in the "mutual creation of values amongst people, neighborhoods and living," this laboratory undertakes research and development based on the concept of mutual creation of values with a focus on the environmental consciousness and life-size "people." The "Techno Gallery" is open to visitors to experience anti-seismic houses, thermal insulation performance and so on.

6-6-2 Sakyo, Nara-shi, Nara  
TEL.0742-70-2111  
<http://www.daiwahouse.co.jp/lab>



**10 Osaka Reiken Co., Ltd.  
Narayama R&D Center**

This R&D Center is dedicated to the self-developed "PET resin solid state polymerization system," and temperature control technology for useful resource recycling. Their operations include degree of polymerization testing, analysis and data collection necessary for recycled products.

6-6-5 Sakyo, Nara-shi, Nara  
TEL.0742-70-5110  
<http://www.reiken.co.jp>



**11 ATOUN Inc.**

With our wearable robots such as power assist suits and powered suits, we're striving to create a society with more power and fewer barriers, where all can work regardless of age or gender. We're investing our time and resources to create and expanding the market of power assist robots, with the slogan "Wear a robot that moves with you in mental and physical harmony."

6-5-2 Sakyo, Nara-shi, Nara  
TEL.0742-71-1878  
<http://atoun.co.jp/>



**12 Nanto Economic Research  
Institute**

A regional think-tank established by Nanto Bank. It is engaged in the study of local economies, industry trends, and business management, and providing study results to various quarters, as well as holding seminars, employee training, and business management consultation at the hands of specialized staff.

6-5-4 Sakyo, Nara-shi, Nara  
TEL.0742-72-0711  
<http://www.nantoeri.or.jp>



**13 Nitta Corporation  
Narayama Training Institute**

As a power transmissions and conveyance industrial parts manufacturer, Nitta created Japan's first leather power transmitting belt in 1888. Since then Nitta has expanded to offer industrial transmission and transport belts, resin hoses and tubes, AC filters, mechatronics, sensor products and more, meeting the needs of the times.

6-5-6 Sakyo, Nara-shi, Nara  
TEL.06-6563-1211  
<http://www.nitta.co.jp>



**14 Icom Inc. Narayama  
Research Institute**

We conduct research and development of the radios and wireless application equipment manufactured and sold by our company, various wireless communication systems, digital communication systems and wireless response systems.

6-5-7 Sakyo, Nara-shi, Nara  
TEL.0742-71-2911  
<http://www.icom.co.jp>



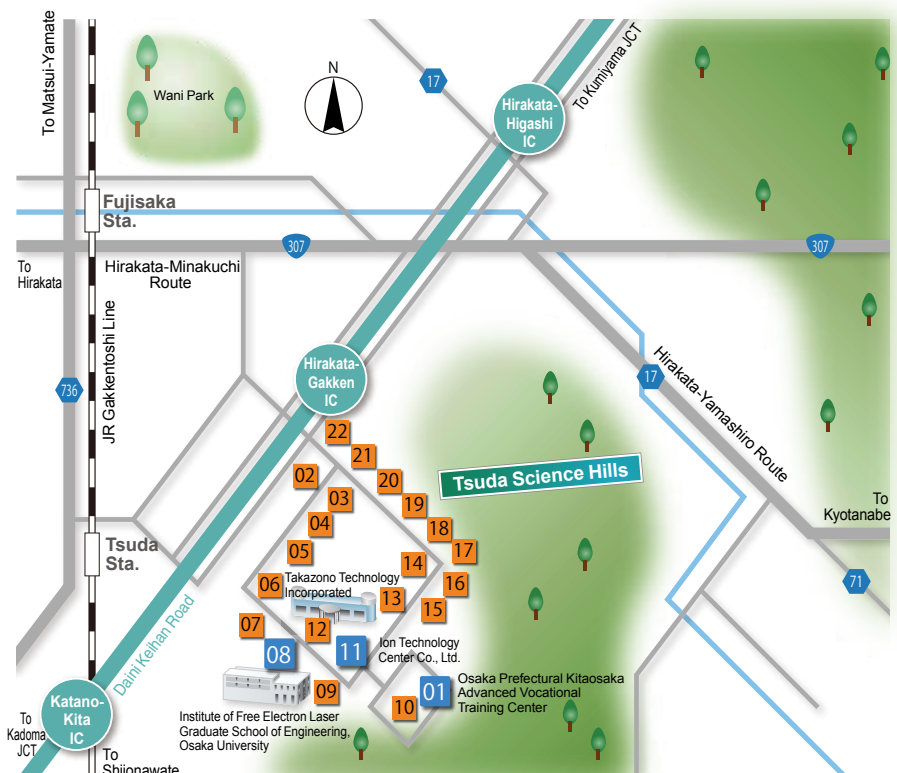
**AREA DETAILED MAP**

**5 Himuro & Tsuda District**

**1 Osaka Prefectural Kitaosaka  
Advanced Vocational Training  
Center**

This is a vocational training facility for human resources development for industries in Osaka. We have eight training courses of machinery, control and construction for job seekers. As for vocational training for the employed, we also offer companies technological courses such as new employee training and skill training. We also run a human resources development center that lends a facility for skill testing and technical training.

2-11-40 Tsudayamate, Hirakata-shi, Osaka  
TEL.072-808-2151  
<http://www.pref.osaka.lg.jp/tc-kiosaka/top/index.html>



### 02 Yoshiizumi Industry Corporation Head office & factory

We develop and sell various types of food slicers with the motto of "cutting various ingredients more practically and more beautifully." In recent years we have also been focusing on developing food processing machines to be used for such purposes as preparation, washing and drying, and offer them as systematic sets.

2-1-1 Tsudayamate, Hirakata-shi, Osaka  
TEL.072-808-3003  
<http://www.yoshiizumi.com>



"Super Fishmonger"  
fillet slicer

### 03 BOUL'MICH Co., Ltd. Hirakata Research Plant

Development, production and sales of western confectioneries.

2-2-1 Tsudayamate, Hirakata-shi, Osaka  
TEL.072-897-1160  
<http://www.boulmich.co.jp>



### 04 Kawachi Kinzoku Seisakusho Co., Ltd.

We are ready to provide precisely cut products on a wide range of level, from a single prototype to mass production.

2-3-1 Tsudayamate, Hirakata-shi, Osaka  
TEL.072-808-3331  
<http://www.kawachikinzo.co.jp>



### 05 Cathy Chemical Industry Co., Ltd. Cathy Technical Center

Cathy is a developer and manufacturer of cosmetics, quasi-drug products and new technologies. Having earned a solid reputation for highly functional safe cosmetics for 60 years since its foundation, Cathy works to further develop new materials and technologies, and offer quality products in the pursuit of beautiful skin.

2-4-1 Tsudayamate, Hirakata-shi, Osaka  
TEL.072-896-1001  
<http://www.cathy.co.jp>



### 06 Nihon Inverter Corporation

We are a manufacturer of drive inverters. Especially skilled in the manufacturing of brushless motors, while it was said that microcomputers could only host 50 thousand rotations, our analog production methods allowed us to achieve more than 200 thousand high speed rotations.

2-6-5 Tsudayamate, Hirakata-shi, Osaka  
TEL.072-897-6210  
<http://www.tsuda-science/enterprise/nic.html>



### 07 Shimakawa Seisakusyo Co., Ltd.

Our company's head factory handles the entire line from research to design to production of industrial dryers, heat treatment furnaces, exhaust emission purifiers (deodorization devices), oxide ethylene purification units and JIS thermal shock test devices. We can also make various order-made products.

2-9-3 Tsudayamate, Hirakata-shi, Osaka  
TEL.072-808-3055  
<http://www.shimakawa.co.jp>



High temperature (700 °C)  
industrial dryer

### 08 Institute of Free Electron Laser Graduate School of Engineering, Osaka University

This R&D facility has a high-intensity picosecond pulse laser that ranges from the visible to the far infrared region. It is built with a combination of a 55MeV electronic linear accelerator and a variety of wigglers (radiant emitter). The operation of the equipment is currently suspended, but is planned to resume in the near future.

2-9-5 Tsudayamate, Hirakata-shi, Osaka  
TEL.072-897-6410  
<http://www.fel.eng.osaka-u.ac.jp>



### 09 Sakamoto Seiki Co., Ltd.

We provide a set of services from material procurement for internal piping of water heaters, gas stoves and kerosene stoves, to end shaping, bending, joint welding, leakage inspection, and delivery. Materials: copper, aluminum, brass, stainless steel, iron, and more

2-9-30 Tsudayamate, Hirakata-shi, Osaka  
TEL.072-858-5001  
<http://www.sakamoto-seiki.co.jp/pc/>



Technology to process  
the ends of copper pipes

### 10 Morishita Jintan Co., Ltd. Osaka Techno Center

Equipped with laboratories and experimental facilities, Osaka Techno Center plays a central role in the research and development of new materials, capsules, and other products. The center also serves as a core plant for the production of JINTAN and the filling and packaging of our products.

2-11-1 Tsudayamate, Hirakata-shi, Osaka  
TEL.072-800-1040  
<http://www.jintan.co.jp>



Rare metal recovery capsules

### 11 Ion Technology Center Co., Ltd.

Ion Technology Center Co., Ltd. is a professional group that offers consulting and technical development support in research and development, focusing on entrusted services of ion implantation and physical analysis.

As a creative laboratory of the times, equipped with our own technology and equipment, we aim to be a superb partner of companies and university researchers.

2-8-1 Tsudayamate, Hirakata-shi, Osaka  
TEL.072-859-6601  
<http://www.iontc.co.jp/>



Ion implantation into  
compound semiconductors,  
deposition and annealing treatment

### 12 Takazono Corporation Takazono Technology Incorporated

Our company works as a research and development company in the top-class drug-packaging manufacturer Takazono Group. We are responsible for developing hardware and software of medical devices and related equipment, providing products to the domestic and overseas markets.

2-8-1 Tsudayamate, Hirakata-shi, Osaka  
TEL.072-808-0200  
<http://www.takazonotechnology.co.jp>



### 13 Shinwa Precision Machinery Co., Ltd.

We are mainly engaged in machining and assembly of precision hydraulic and marine diesel engine parts. We set up a factory in Vietnam for further growth and development under a management system which can create high value-added products with customer trust, reliability and satisfaction set as our motto.

2-7-1 Tsudayamate, Hirakata-shi, Osaka  
TEL.072-808-5111  
<http://www.shinwapm.co.jp>



## 14 Ueda Industry Co., Ltd.

We manufacture press works and mold designs for bicycle parts, light electrical appliance parts and all other parts.

2-2-20 Tsudayamate, Hirakata-shi, Osaka  
TEL.072-808-3800  
<http://www.uedaindustry.co.jp>



## 15 SAWA CORPORATION

With ultrasonic science as our core technology, we develop and propose products which meet customers' requirements. We mainly handle development, manufacture and sales of metal mask cleaning devices used for cream solder in the SMT board mounting process, cleaning devices of metal masks and mesh screens used in the process of manufacturing electronic components and semiconductors, and cleaning devices of gravure cylinders used in package printing.

2-17-1 Tsudayamate, Hirakata-shi, Osaka  
TEL.072-859-8800  
<http://www.sawa-corp.co.jp>



"Sawa Ecobrid SC-AH100"  
metal stencil cleaner

## 16 Seiwa Optical Co., Ltd. Kansai Main Office/Hirakata Development Center

We utilize optical technology for industrial facilities such as manufacturing devices for semiconductors and FPDs, and develop and manufacture products that are ahead of the times.

We manufacture products under a comprehensive management system from consultation on product specifications to development, manufacturing and quality control, to meet the customer needs.

2-17-10 Tsudayamate, Hirakata-shi, Osaka  
TEL.072-808-0550  
<http://www.seiwaopt.co.jp>



Semiconductor and FPD  
exposure machine

## 17 ASKK Co., Ltd.

-Processing of metal-resin prototype parts  
-Processing of a wide variety, small lot of precision parts  
-Short delivery processing  
-Design, processing, assembly and sales of wire stripping machines for recycling

2-18-1 Tsudayamate, Hirakata-shi, Osaka  
TEL.072-808-5555  
<http://www.askk.co.jp>



## 18 Kitamura Co., Ltd.

We manufacture diesel engine parts for ships, construction equipment, hydraulic equipment parts, and materials for other various mechanical parts. We cover production of everything from cans to machines.

2-19-1 Tsudayamate, Hirakata-shi, Osaka  
TEL.072-808-5811  
<http://www.kitamura-iron.co.jp>



## 19 M System Co., Ltd.

Designing, manufacturing, sales and import/export of machine tools, robot systems and peripheral equipment.

Manufacturing, sales and import/export of metal machine tools, metal machine tool parts and accessories.

Design, production, sales and import/export of fixtures.

2-19-10 Tsudayamate, Hirakata-shi, Osaka  
TEL.072-897-3010  
<http://m-sys-corp.jp/>



## 20 Sakamoto Sekkei Technical Development Lab.

We mainly design, collect data, work on modeling, numerical control, and foam profiling of press molds for automobiles. We also research, develop, manufacture and sell medical devices, and are engaged in activities to promote local businesses using local mascot characters in cooperation with the Kansai Creator's Group (SSTG) that promotes industry-academia-public partnership.

2-20-1 Tsudayamate, Hirakata-shi, Osaka  
TEL.072-897-5311  
<http://www.s-sst.com>



6-axis robot "KUKA"

## 21 Hirakata Giken, Inc.

We have been engaged in mechanical design and manufacture since the establishment of our company in 1972. In 1995 we developed and put on the market a brand-new anti-vibration material Non-Bren, which can also be used as shock absorbing material and earthquake resistant fixing material. Our own branded product, the Non-Bren is employed for underfloor soundproofing and anti-vibration on the JR Shinkansen trains.

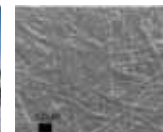
2-20-10 Tsudayamate, Hirakata-shi, Osaka  
TEL.072-396-9001  
<http://www.hirakata-g.co.jp>



## 22 Sansho Co., Ltd. Research Laboratory

Sansho was founded in 1955 as a trading house specializing in water-soluble natural polymer agents, and has built a strong position in the macromolecular additive field and other domains. In order to provide both products and technical services as the basis of its business, Sansho performs quality tests and research and development of applied technologies in-house.

2-21-1 Tsudayamate, Hirakata-shi, Osaka  
TEL.072-808-0070  
<http://www.sansho.co.jp>



Surface of SAFLON®  
viscose converted paper

**Mori no Kosakukan**  
(Woodwork activity center)

Visitors can enjoy hands-on exhibits for learning about nature, do woodwork using various materials and observe insects, birds and plants that inhabit Muroike Pond so as to learn how the living world works.

**Forest Treasure Island Park**

A park equipped with a 54 m-long suspension bridge and a picture-book fairy tale land (clock tower, wooden train, etc.).

**Waterside Natural Park**

This natural park provides a 1.6 km family trail that is ideal for viewing aquatic creatures or just basking in the woods, and a 3.2 km nature trail for enjoying seasonal flowers and wild birds.



**01 Midori no Bunkaen**  
(Green Cultural Park)

A rich, green culture garden in the greenery of Kongo Ikoma Kisen Quasi-National Park

Major sports facilities

- 17 tennis courts
- Baseball grounds (Hardball: 1, Softball: 1)
- Ball game grounds(Soccer, football and rugby)

**Sharp Labor Union Training Center**  
**Recreation Center I&I Land**

It is a resort accommodation facility that can be used for various occasions such as meetings, training, accommodation, meals, banquets, parties. The types of accommodations vary from single rooms, twin-bedded rooms, rooms for groups and cottages. It is fully equipped with a hall, meeting/training room, restaurant and banquet hall.

458 Ousaka, Shijonawate-shi, Osaka  
TEL.072-876-1911  
<http://www.iiland.ne.jp>

**02 Osaka Civic Forest**  
(Muroike Park)

Established as a memorial for the centenary of the establishment of the Osaka prefectural government, it is a natural park facility located near Kongo Ikoma Kisen Quasi-National Park where visitors can enjoy nature and the forest.

Muroike Park Information Center  
Kiyotaki and Minamino, Ousaka, Shijonawate-shi, Osaka  
TEL.072-879-6362 <http://www.osaka-midori.jp/mori/enchi/muroike.html>



**Midori no Bunkaen Center Plaza**  
**General Information Center**

In addition to contracted operation of sports facilities, it provides comprehensive guidance for the facilities and reservation services.

485 Ousaka, Shijonawate-shi, Osaka  
TEL.072-876-4101  
<http://www.midorinobunkaen.com>

**Green farm Corporation**  
(Watashi No Taiyou Nouen)

Green farm is a facility that uses light agricultural labor (still sand culture) as job assistance work that even people with physical difficulties can easily do. Home-cooked vegetables can be enjoyed at the farm restaurant. Local Osaka vegetables harvested in the morning and pickled greens are available for sale (Sundays and national holidays from April to November)

479-4 Ousaka, Shijonawate-shi, Osaka  
TEL.072-863-2121  
<http://watasinotaiyounouen.com>

**03 Osaka Electro-Communication University**  
(Shijonawate Campus)

The Shijonawate campus includes Faculty of Biomedical Engineering and Faculty of Information Science and Arts. Faculty of Biomedical Engineering trains clinical engineers, physical therapists, and sports coaches with specialized knowledge of the medical field. In addition to Department of Computer Science and the Department of Digital Games, the Department of Games and Media will be newly established at Faculty of Information Science and Arts in fiscal 2018, with the aims of developing human resources who can work in many areas in the digital industry. We will make greater efforts to foster talent that can satisfy various needs of society.

1130-70 Kiyotaki, Shijonawate-shi, Osaka  
TEL.072-876-3317  
<http://www.osakac.ac.jp/>



**SEI Ikoma Seminar House**

This facility contains large training rooms and lodging facilities available for corporate training programs and private social gatherings.

466-2 Ousaka, Shijonawate-shi, Osaka  
TEL.072-879-7505  
<http://www.midorinobunkaen.com/sei.html>

**Nan-yo Lodge**  
(General Foundation for Nan-yo Shogakukai Youth Exchange Center)

This facility is available for nature-friendly activities for the youth who carry our future, through camps, training and meetings. There are six guest rooms, a dining room, kitchen and shower room and can accommodate approximately 40 people.

461-4 Ousaka, Shijonawate-shi, Osaka  
TEL.072-876-1539  
<http://nanyo-lodge.sakura.ne.jp/>

**04 Japan Speed Shore Co., Ltd.**  
**Headquarters and Training Center**

A training facility for various types of earth-retaining and laser equipment for construction. This facility is a blend of Japanese- and Western-style architecture. It combines a turquoise roof, which evokes images of the neighboring Nara district, and light brown tile-clad exterior walls. It has a dry landscape garden created with white sands and arranged stones in karesansui style that offers a magnificent view with the borrowed background scenery of the Ikoma Mountains.

8-2-5 Tawaradai, Shijonawate-shi, Osaka  
TEL.0743-78-9000  
<http://www.speedshore.co.jp/>



# 7 Heijo Palace Site District

7

## 01 Nara National Research Institute for Cultural Properties

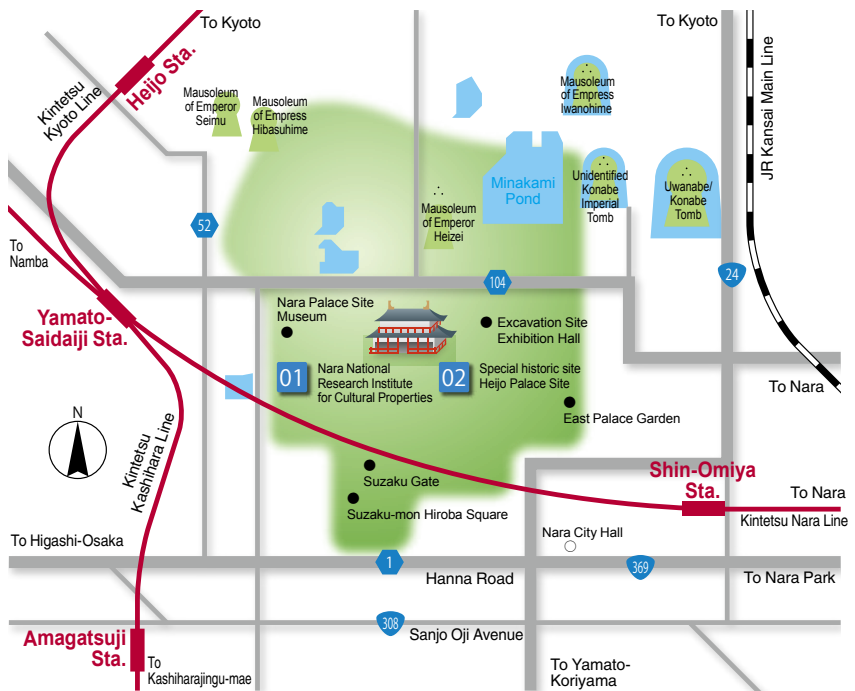
Bordering the ruins of Heijo Palace, this facility conducts excavation, surveys, and research in order to preserve and utilize immovable cultural properties such as ancient ruins, buildings, and gardens, as well as cultural properties of various areas in Japan and abroad. In addition, it offers training, cooperation, and consultation to local authorities around the country.

247-1 Sakicho, Nara-shi, Nara (Temporary office)  
 TEL.0742-30-6753  
<https://www.nabunken.go.jp/>



## 02 Heijo Palace Site

Heijo Palace was the political and administrative center of the Japanese capital city of Heijo-kyo during the Nara period. It contained the Imperial Audience Hall, where the Emperor would attend state ceremonies, the Inner Palace, which was the Emperor's residential compound, the Chodoin, which functioned as a place for government affairs and banquets, and many other administrative buildings, where hundreds of people worked. A lot of facilities such as a café, a restaurant, shops where visitors can purchase Nara prefecture specialty goods, and the transport terminal are at Suzaku-mon Hiroba Square, where the bustle of 1,300 years ago has been revived.



### Major facilities open to public

#### Suzaku Gate

The restored front gate of the Heijo Palace that opens toward Suzaku Oji Avenue.

#### Daigokuden (First phase)

The restored Daigokuden, the central building of the Heijo Palace. The interior is also open to public.

#### Excavation Site Exhibition Hall

Ruins unearthed in excavation work are exhibited as they were found.

#### Nara Palace Site Museum

Results of the excavation and research done by the Nara National Research Institute for Cultural Properties are exhibited in an easy-to-understand way.

#### Suzaku-mon Hiroba Square

##### ▶ Tempyo Miharashi-kan (Observation Deck)

This facility has a rest place, an observation deck, and a virtual reality theater. It also serves as a starting point of a jogging or cycling tour around the park.

##### ▶ Tempyo Mitsuki-kan (Shops)

This is where visitors can get tourist information about Nara prefecture. Specialty goods of Nara prefecture and products associated with Heijo-kyo capital can be purchased here.

##### ▶ Tempyo Umashi-kan (Restaurant and Cafe)

Visitors can relax at the café or the restaurant while enjoying the scenery of the park. There is a section where visitors can learn about the history of Kentoushi Ship.

##### ▶ Tempyo Tsudoi-kan (Information)

This is where visitors can get information about the facilities in the park. This facility can also be used as a lecture room for groups.

##### ▶ Heijokyu Izanai-kan (Guidance Center)

Visitors can learn about how the Heijo-kyo capital appeared in the past and how people lived there through the video programs and the models displayed.

##### ▶ Suzaku-oji and Nijo-oji

The main streets of the Heijo-kyo capital. Suzaku-oji and Nijo-oji have been restored and arranged to re-create the atmosphere of the Heijo-kyo capital that thrived in the Nara period.

# 8 Takayama District



## 01 Nara Institute of Science and Technology (NAIST)

In addition to the existing disciplines of information, biotechnology and creation of materials, we create the research results of international standards that will in turn create the next generation's society through active commitment to combined domains. With the advanced education based on those achievements, we can cultivate personnel who will challenge new technologies with higher aspirations as well as researchers who play an instructive role in the international society, which contributes to the progress of technology and growth of society.

8916-5 Takayama-cho, Ikoma-shi, Nara  
TEL.0743-72-5111  
<http://www.naist.jp/>



## 02 Takayama Science Plaza (Exchange facility)

This activity base is operated by the Foundation for Nara Institute of Science and Technology so as to provide assistance to NAIST, industry-academia cooperation and regional interactions. It also has offices for rent, residence for researchers, a restaurant and other facilities.

8916-12 Takayama-cho, Ikoma-shi, Nara  
TEL.0743-72-5810  
<http://www.science-plaza.or.jp>



## 03 Santen Pharmaceutical Co., Ltd. Nara R&D Center

The Nara Research and Development Center was established in 1996 to promote cutting edge research and development in the field of ophthalmology. It was expanded twice, in 2002 and 2008, to integrate the medical and pharmaceutical research and development functions so that it can play a central role in research and development in Santen.

8916-16 Takayama-cho, Ikoma-shi, Nara  
TEL.0743-79-4520  
<http://www.santen.co.jp/ja/index.jsp>



## 04 Ueroku Printing Co., Ltd.

We take pride in our motto to be always on the side of our customers. Providing attractive and luxurious packages for cosmetics and other products, we have been creating our corporate value with the goal of 120% customer satisfaction by our distinctive expression techniques and high-quality services. We have established comprehensive production systems by introducing most advanced facilities and have received highest appreciation and trust by quickly and appropriately responding to demanding customers.

8916-15 Takayama-cho, Ikoma-shi, Nara  
TEL.0743-71-3039  
<http://ue6.jp>



## 05 Burley Plus CO., LTD

Our company serves as a production and research/design/development center for the Nichifu Group's press and plastic molds. We manufacture and sell electric connection parts used for indoor wiring, electric vehicles, LED lighting, solar panels, and many other products.

8916-18 Takayama-cho, Ikoma-shi, Nara  
TEL.0743-70-1651



## 06 Takayama Chikurinen Garden

This garden was developed to familiarize people at large with the beauty and shape of tea utensils – tea scoops including Takayama tea whisks with a 500-year history, ladles, vases and incense containers – and knitting needles. It was opened to promote bamboo products, the traditional industry of Ikoma City, and increase the level of culture and education in the area. In the beautiful garden, you will also find a biotope with some 50 kinds of bamboos, a museum (Japanese-style room, training room and exhibition room) and the Chikubuan tea house.

3440 Takayama-cho, Ikoma-shi, Nara  
TEL.0743-79-3344  
<http://www1.kcn.ne.jp/~takayama/pages/syokai.html>



## 07 ASHIDA MFG CO.,LTD Head Factory

We develop technology and devices to form Carbon Fiber Reinforced Plastic (CFRP), often used in aircrafts, and manufacture autoclaves for molding CFRP. We also develop, design and manufacture heat-treatment systems to meet the needs of various industries.

8916-11 Takayama-cho, Ikoma-shi, Nara  
TEL.0743-72-3355  
<http://www.ashida-mfg.co.jp/>



# Facility Index

Facility Name	Administrative district	District Name	Page	Number
ADCOAT CO., LTD.	Seika-cho, Soraku-gun, Kyoto	Seika & Nishi-Kizu	5	1-44
Advanced Telecommunications Research Institute International (ATR)	Seika-cho, Soraku-gun, Kyoto	Seika & Nishi-Kizu	1	1-02
ANGEL PLAYING CARDS MFG. CO., LTD Kansai Science City Manufacturing and Research Center	Seika-cho, Soraku-gun, Kyoto	Seika & Nishi-Kizu	4	1-41
Asahi Printing Co., Ltd. Kyoto Creative Park	Kizugawa-shi, Kyoto	Kizu	8	3-11
ASHIDA MFG CO.,LTD Head Factory	Ikoma-shi, Nara	Takayama	15	8-07
ASKK Co., Ltd.	Hirakata-shi, Osaka	Himuro & Tsuda	12	5-17
Atecs corp. Kyoto factory (R&D center)	Seika-cho, Soraku-gun, Kyoto	Seika & Nishi-Kizu	4	1-40
ATOUn Inc.	Nara-shi, Nara	Hejo & Soraku	10	4-11
BOULMICH Co., Ltd. Hirakata Research Plant	Hirakata-shi, Osaka	Himuro & Tsuda	11	5-03
Burley Plus CO., LTD	Ikoma-shi, Nara	Takayama	15	8-05
Cathy Chemical Industry Co., Ltd. Cathy Technical Center	Hirakata-shi, Osaka	Himuro & Tsuda	11	5-05
D-egg Incubation facility launched by Doshisha University	Kyotanabe-shi, Kyoto	Tanabe	6	2-02
Daiwa House Industry Central Research Laboratory	Nara-shi, Nara	Hejo & Soraku	10	4-09
Doshisha University (Gakketoshi Campus)	Kizugawa-shi, Kyoto	Seika & Nishi-Kizu	1	1-06
Doshisha University (Kyotanabe Campus)	Kyotanabe-shi, Kyoto	Tanabe	6	2-01
Doshisha University (Tatara Campus)	Kyotanabe-shi, Kyoto	Minami-Tanabe & Komada	6	2-04
Doshisha Women's College of Liberal Arts (Kyotanabe Campus)	Kyotanabe-shi, Kyoto	Tanabe	6	2-03
Dynamic Tools Corporation	Seika-cho, Soraku-gun, Kyoto	Seika & Nishi-Kizu	2	1-11
EC FRONTIER ., Inc	Seika-cho, Soraku-gun, Kyoto	Seika & Nishi-Kizu	5	1-43
Experimental Farm, Graduate School of Agriculture, Kyoto University	Kizugawa-shi, Kyoto	Kizu	8	3-12
Fukujen CHA Experience Park	Kizugawa-shi, Kyoto	Hejo & Soraku	9	4-03
Gnes Corporation	Seika-cho, Soraku-gun, Kyoto	Seika & Nishi-Kizu	3	1-27
Green farm Corporation (Watashi No Taiyou Nouen)	Shijonawate-shi, Osaka	Kiyotaki & Muroike	13	6-01
Heijo Palace Site (Special Historic Site)	Nara-shi, Nara	Hejo Palace Site	14	7-02
Hirakata Giken, Inc.	Hirakata-shi, Osaka	Himuro & Tsuda	12	5-21
Hitachizosen Corporation Environment Business Headquarters Business &Product Development Division	Kizugawa-shi, Kyoto	Hejo & Soraku	9	4-07
Ichiguchi Corporation Kyoto Hikaridai Laboratory	Seika-cho, Soraku-gun, Kyoto	Seika & Nishi-Kizu	3	1-24
Icom Inc. Narayama Research Institute	Nara-shi, Nara	Hejo & Soraku	10	4-14
Inoue Manufacturing Co., Ltd.	Seika-cho, Soraku-gun, Kyoto	Seika & Nishi-Kizu	2	1-09
Institute of Free Electron Laser Graduate School of Engineering, Osaka University	Hirakata-shi, Osaka	Himuro & Tsuda	11	5-08
International Institute for Advanced Studies (IIAS)	Kizugawa-shi, Kyoto	Seika & Nishi-Kizu	1	1-04
Ion Technology Center Co., Ltd.	Hirakata-shi, Osaka	Himuro & Tsuda	11	5-11
Japan Correspondence Machines and Tools Co., Ltd. Community Palace	Kizugawa-shi, Kyoto	Hejo & Soraku	9	4-04
Japan Juice Co., Ltd. Kyoto south center	Kizugawa-shi, Kyoto	Kizu	8	3-13
Japan Speed Shore Co., Ltd. Headquarters and Training Center	Shijonawate-shi, Osaka	Tawara	13	6-04
JEUGIA Culture Center Ecole	Kizugawa-shi, Kyoto	Hejo & Soraku	9	4-02
Kagoya Japan Inc. Keihanna Laboratory	Seika-cho, Soraku-gun, Kyoto	Seika & Nishi-Kizu	2	1-10
Kaji Corporation Keihanna R&D Center	Seika-cho, Soraku-gun, Kyoto	Seika & Nishi-Kizu	4	1-31
Kankyo Eisei Yakuhin Co., Ltd. Living Area Environmental Health Laboratory Kansai Gakken Laboratory	Seika-cho, Soraku-gun, Kyoto	Seika & Nishi-Kizu	3	1-25
Kansai-kan of the National Diet Library	Seika-cho, Soraku-gun, Kyoto	Seika & Nishi-Kizu	1	1-03
Kawachi Kinzoku Seisakusho Co., Ltd.	Hirakata-shi, Osaka	Himuro & Tsuda	11	5-04
KEC Electronic Industry Development Center	Seika-cho, Soraku-gun, Kyoto	Seika & Nishi-Kizu	4	1-34
Keihanna Commemorative Park (Kyoto Prefectural Kansai Science City Commemorative Park)	Seika-cho, Soraku-gun, Kyoto	Seika & Nishi-Kizu	2	1-08
Keihanna Open Innovation Center(KICK)	Kizugawa-shi, Kyoto	Seika & Nishi-Kizu	5	1-46
Keihanna Plaza	Seika-cho, Soraku-gun, Kyoto	Seika & Nishi-Kizu	1	1-01
Kinden Corporation Kyoto Institute	Kizugawa-shi, Kyoto	Hejo & Soraku	9	4-05
Kintetsu Cable Network Kyoto Corporation	Seika-cho, Soraku-gun, Kyoto	Seika & Nishi-Kizu	5	1-45
Kitamura Co., Ltd.	Hirakata-shi, Osaka	Himuro & Tsuda	12	5-18
Kowa Industrial Co., Ltd.	Seika-cho, Soraku-gun, Kyoto	Seika & Nishi-Kizu	4	1-33
KPS Industry Co., Ltd.	Seika-cho, Soraku-gun, Kyoto	Seika & Nishi-Kizu	2	1-14
Kyocera Corporation, R&D Center, Keihanna	Seika-cho, Soraku-gun, Kyoto	Seika & Nishi-Kizu	3	1-19
Kyoto Nutritional Supplements & Laboratory Inc.	Seika-cho, Soraku-gun, Kyoto	Seika & Nishi-Kizu	4	1-35
Kyoto Prefectural Agriculture Forestry and Fisheries Technology Center Biotechnology Research Department	Seika-cho, Soraku-gun, Kyoto	Minami-Tanabe & Komada	6	2-05
Kyoto Prefectural Keihanna Hall	Seika-cho, Soraku-gun, Kyoto	Seika & Nishi-Kizu	1	1-01
Kyoto Prefectural University Seika Campus University Farm, Faculty of Life and Environmental Sciences Cooperation Center with Industry, University and Administration	Seika-cho, Soraku-gun, Kyoto	Minami-Tanabe & Komada	6	2-06
Kyoto Press Kogyo K.K.	Kizugawa-shi, Kyoto	Kizu	7	3-06
MANYO TOOLS CO., LTD	Kizugawa-shi, Kyoto	Kizu	7	3-05
Marutaka Co., Ltd.	Kizugawa-shi, Kyoto	Kizu	8	3-14
Meiwa Rubber Co., Ltd. Kyoto Technical Center	Seika-cho, Soraku-gun, Kyoto	Seika & Nishi-Kizu	2	1-12
Midori no Bunkaen Center Plaza General Information Center	Shijonawate-shi, Osaka	Kiyotaki & Muroike	13	6-01
Midori no Bunkaen (Green Cultural Park)	Shijonawate-shi, Osaka	Kiyotaki & Muroike	13	6-01
Mizuho Co., Ltd. Technical Laboratory	Kizugawa-shi, Kyoto	Kizu	8	3-10
MOLITEC STEEL Co.,LTD. Keihanna R&D Center	Seika-cho, Soraku-gun, Kyoto	Seika & Nishi-Kizu	5	1-50
Morishita Jintan Co., Ltd. Osaka Techno Center	Hirakata-shi, Osaka	Himuro & Tsuda	11	5-10
M System Co., Ltd.	Hirakata-shi, Osaka	Himuro & Tsuda	12	5-19

Facility Name	Administrative district	District Name	Page	Number
M-System Co., Ltd. Kyoto Research Center & Factory	Kizugawa-shi, Kyoto	Kizu	8	3-09
M-System Co., Ltd. Kyoto Techno Center	Kizugawa-shi, Kyoto	Kizu	8	3-08
MUFG Bank, Ltd. Kansai Business Center		Seika & Nishi-Kizu	5	1-53
Naigai Kasei Co., Ltd. Kyoto Plant R&D Center	Seika-cho, Soraku-gun, Kyoto	Seika & Nishi-Kizu	4	1-38
Nan-yo Lodge (General Foundation for Nan-yo Shogakukai Youth Exchange Center)	Shijonawate-shi, Osaka	Kiyotaki & Muroike	13	6-01
Nanto Economic Research Institute	Nara-shi, Nara	Heijo & Soraku	10	4-12
Nara Hokubu Hall Civic Cultural Hall	Nara-shi, Nara	Heijo & Soraku	9	4-08
Nara Institute of Science and Technology (NAIST)	Ikoma-shi, Nara	Takayama	15	8-01
Nara National Research Institute for Cultural Properties	Nara-shi, Nara	Heijo Palace Site	14	7-01
National Institutes for Quantum and Radiological Science and Technology	Kizugawa-shi, Kyoto	Kizu	7	3-01
National Institute of Information and Communications Technology	Seika-cho, Soraku-gun, Kyoto	Seika & Nishi-Kizu	2	1-18
NEURON JAPAN CO., LTD.	Seika-cho, Soraku-gun, Kyoto	Seika & Nishi-Kizu	4	1-36
Nidec Center of Industrial Science	Seika-cho, Soraku-gun, Kyoto	Seika & Nishi-Kizu	4	1-52
Nihon Inverter Corporation	Hirakata-shi, Osaka	Himuro & Tsuda	11	5-06
Nihon Seigyo Co., Ltd.	Seika-cho, Soraku-gun, Kyoto	Seika & Nishi-Kizu	3	1-29
Nijo Maruhachi Co., Ltd. Nijo Maruhachi Ceremony Research Laboratory	Kizugawa-shi, Kyoto	Heijo & Soraku	9	4-06
Nitta Corporation Narayama Training Institute	Nara-shi, Nara	Heijo & Soraku	10	4-13
NTT Communication Science Laboratories	Seika-cho, Soraku-gun, Kyoto	Seika & Nishi-Kizu	2	1-16
Omron Corporation Keihanna Technology Innovation Center	Kizugawa-shi, Kyoto	Seika & Nishi-Kizu	2	1-07
Orientalbakery KYOTO FACTORY&LAB	Seika-cho, Soraku-gun, Kyoto	Seika & Nishi-Kizu	5	1-51
Osaka Civic Forest (Muroike Park)	Shijonawate-shi, Osaka	Kiyotaki & Muroike	13	6-02
Osaka Electro-Communication University (Shijonawate Campus)	Shijonawate-shi, Osaka	Kiyotaki & Muroike	13	6-03
Osaka Prefectural Kitaosaka Advanced Vocational Training Center	Hirakata-shi, Osaka	Himuro & Tsuda	10	5-01
Osaka Reiken Co., Ltd. Narayama R&D Center	Nara-shi, Nara	Heijo & Soraku	10	4-10
Panasonic Corporation Technology Innovation Division	Seika-cho, Soraku-gun, Kyoto	Seika & Nishi-Kizu	2	1-17
Photon Co., Ltd.	Seika-cho, Soraku-gun, Kyoto	Seika & Nishi-Kizu	3	1-21
Protex Japan Inc.	Seika-cho, Soraku-gun, Kyoto	Seika & Nishi-Kizu	4	1-37
Research Institute of Innovative Technology for the Earth (RITE)	Kizugawa-shi, Kyoto	Seika & Nishi-Kizu	1	1-05
Rohto Pharmaceutical Co., Ltd. Rohto Research Village Kyoto	Kizugawa-shi, Kyoto	Kizu	7	3-04
Sakamoto Seiki Co., Ltd.	Hirakata-shi, Osaka	Himuro & Tsuda	11	5-09
Sakamoto Sekkei Technical Development Lab.	Hirakata-shi, Osaka	Himuro & Tsuda	12	5-20
Sansho Co., Ltd. Research Laboratory	Hirakata-shi, Osaka	Himuro & Tsuda	12	5-22
Santen Pharmaceutical Co., Ltd. Nara R&D Center	Ikoma-shi, Nara	Takayama	15	8-03
SAWA CORPORATION	Hirakata-shi, Osaka	Himuro & Tsuda	12	5-15
SEI Ikoma Seminar House	Shijonawate-shi, Osaka	Kiyotaki & Muroike	13	6-01
SEIWA INDUSTRY CO., LTD. KIZUGAWA ECT CENTER	Kizugawa-shi, Kyoto	Kizu	8	3-15
Seiwa Optical Co., Ltd. Kansai Main Office/Hirakata Development Center	Hirakata-shi, Osaka	Himuro & Tsuda	12	5-16
Sekisui House Ltd. Comprehensive Housing R&D Institute	Kizugawa-shi, Kyoto	Heijo & Soraku	9	4-01
SEW-EURODRIVE JAPAN CO.LTD Kyoto Operation Center	Seika-cho, Soraku-gun, Kyoto	Seika & Nishi-Kizu	5	1-49
Sharp Labor Union Training Center Recreation Center I&I Land	Shijonawate-shi, Osaka	Kiyotaki & Muroike	13	6-01
Shimadzu Corporation Technology Research Laboratory	Seika-cho, Soraku-gun, Kyoto	Seika & Nishi-Kizu	3	1-20
Shimakawa Seisakusyo Co., Ltd.	Hirakata-shi, Osaka	Himuro & Tsuda	11	5-07
Shinwa Precision Machinery Co., Ltd.	Hirakata-shi, Osaka	Himuro & Tsuda	11	5-13
Silex Technology Inc. Keihanna Headquarters	Seika-cho, Soraku-gun, Kyoto	Seika & Nishi-Kizu	2	1-15
Sohraku Industrial Corporation	Seika-cho, Soraku-gun, Kyoto	Seika & Nishi-Kizu	3	1-28
SOWA Technical Institution KEIHANNA	Seika-cho, Soraku-gun, Kyoto	Seika & Nishi-Kizu	4	1-42
Spread Co., Ltd. Techno Farm Keihanna	Kizugawa-shi, Kyoto	Seika & Nishi-Kizu	5	1-54
Sun Plastics Co., Ltd. Technology Center	Seika-cho, Soraku-gun, Kyoto	Seika & Nishi-Kizu	4	1-39
Suntory World Research Center	Seika-cho, Soraku-gun, Kyoto	Seika & Nishi-Kizu	5	1-47
Taiko Pharmaceutical Co.,Ltd. Kyoto Plant / R&D Center	Seika-cho, Soraku-gun, Kyoto	Seika & Nishi-Kizu	5	1-48
Takayama Chikurinen Garden	Ikoma-shi, Nara	Takayama	15	8-06
Takayama Science Plaza (Exchange facility)	Ikoma-shi, Nara	Takayama	15	8-02
Takayoshi Kinzoku K.K. Hikaridai Technology Center	Seika-cho, Soraku-gun, Kyoto	Seika & Nishi-Kizu	3	1-30
Takazono Corporation Takazono Technology Incorporated	Hirakata-shi, Osaka	Himuro & Tsuda	11	5-12
TAKAZONO LEAVES CO., LTD	Kizugawa-shi, Kyoto	Kizu	7	3-07
TATSUTA ELECTRIC WIRE & CABLE CO., LTD TATSUTA Technical Center	Kizugawa-shi, Kyoto	Kizu	7	3-03
Technoflex Corporation Kyoto Laboratory	Seika-cho, Soraku-gun, Kyoto	Seika & Nishi-Kizu	3	1-23
The Kids' Science Museum of Photons	Kizugawa-shi, Kyoto	Kizu	7	3-02
Toei Sangyo Co., Ltd.	Seika-cho, Soraku-gun, Kyoto	Seika & Nishi-Kizu	2	1-13
Ueda Industry Co., Ltd.	Hirakata-shi, Osaka	Himuro & Tsuda	12	5-14
Ueroku Printing Co., Ltd.	Ikoma-shi, Nara	Takayama	15	8-04
WILLCONSULTANT limited company	Seika-cho, Soraku-gun, Kyoto	Seika & Nishi-Kizu	4	1-32
Will Manufacturing Co., Ltd.	Seika-cho, Soraku-gun, Kyoto	Seika & Nishi-Kizu	3	1-22
WIST Co., Ltd.	Seika-cho, Soraku-gun, Kyoto	Seika & Nishi-Kizu	3	1-26
Yoshiizumi Industry Corporation Head office & factory	Hirakata-shi, Osaka	Himuro & Tsuda	11	5-02



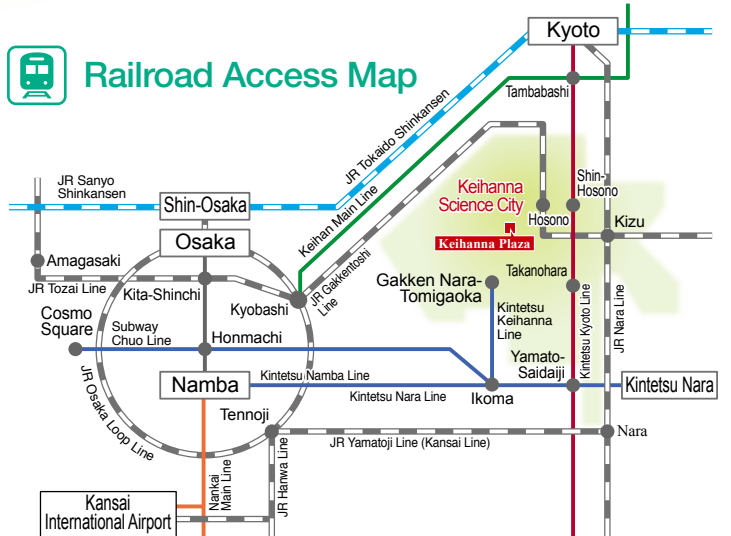
# Access Map



## Road Access Map



## Railroad Access Map



# Keihanna Science City



Public Foundation of Kansai Research Institute  
 Kansai Science City Construction Promotion Conference

Laboratory Wing 3F, Keihanna Plaza (Keihanna Science City)  
 1-7 Hikaridai, Seika-cho, Soraku-gun, Kyoto 619-0237  
 TEL.0774-95-5105 FAX.0774-95-5104 URL.https://www.kri.or.jp/

