

Press Release

March 6, 2019

Keihanna Research Complex  
Public Foundation of Kansai Research Institute  
Advanced Telecommunications Research Institute International  
The Elegant Monkeys Ltd.  
KIMURA KOHKI CO., LTD

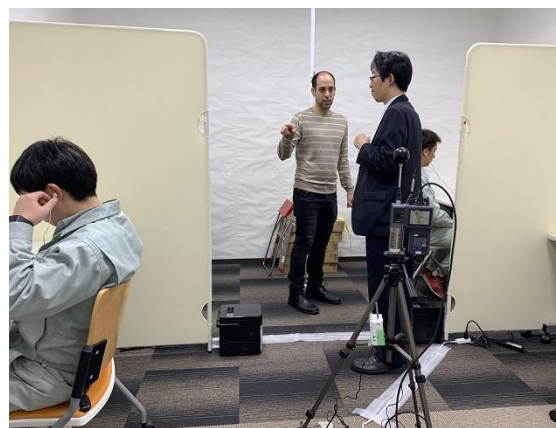
## KRI, ATR, and TEM Sign a MoU and Start Global Open Innovation Projects

Public Foundation of Kansai Research Institute (KRI) ; Advanced Telecommunications Research Institute International (ATR); and the Elegant Monkeys Ltd. (TEM), an Israeli startup signed a memorandum of understanding (MoU) for further development of TEM's AI technology that enables objective measurement of human emotional load level from vital signs called the Kenko Technology. Backed by this MoU, KIMURA KOHKI CO., LTD (KIMURA KOHKI) will implement a joint experiment of their products/services in cooperation with TEM, supported by ATR.

As this case shows, KRI and ATR, the core organizations of the Keihanna Research Complex (Keihanna RC), have been offering "Keihanna Open Global Service Platform for Accelerated Co-Innovation" (KOSAINN), a platform to integrate joint implementation projects at a global level. The Keihanna RC will continue to create various projects for a next-generation smart city that aims to generate empathy in people's hearts.



MoU signing ceremony  
Hiroyuki Suzuki (Executive Vice President, ATR);  
Yasuo Kashihara (President, KRI); and Nimrod  
Kramer (Co-Founder and VP Product, TEM)



KIMURA KOHKI, TEM, and ATR worked together on a preliminary experiment at a support center of YAMATO Inc. in March, 2019.

## Background

Keihanna RC, a project unit proceeding with a global cooperation as its essential strategy, have been dedicated to creating global projects with Israel for several years. Given such background, the core organizations i.e., KRI and ATR, signed a MoU with Israel Innovation Authority (IIA) on January 15, 2019, with attendance of Economy, Trade and Industry Ministers of both countries. TEM and Keihanna RC concluded MoU on the next day in this regard.

## Outline of MoU

The MoU include: building a business ecosystem to enrich one's life together; promoting utilization of TEM's technology in joint experiments promoted in KOSAINN; and supporting joint activities of TEM and Japanese companies.

## Outline of Joint Demonstration Experiments

KIMURA KOHKI implements a joint experiment with TEM to evaluate the productivity and efficiency improved by "Air Beam", the radiant and laminar flow unit manufactured by KIMURA KOHKI. The Air Beam adds high value to office environment by keeping the airflow and temperature consistent in a room; it helps realize a comfortable working environment which enables office staff to concentrate on their work and feel refreshed.

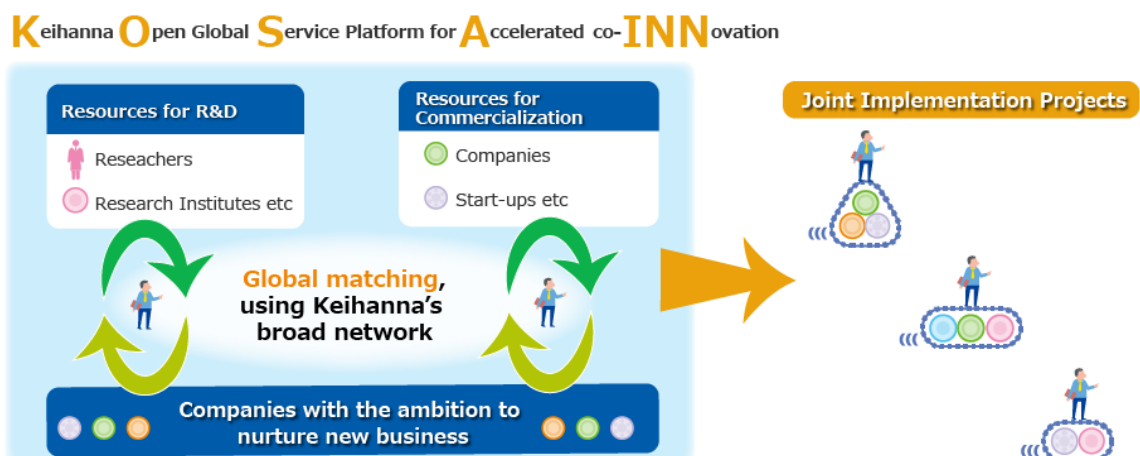
### ■ About Keihanna Research Complex (RC)

Keihanna Science City has been constructed under a Japanese national project, and 30 years have passed since its construction began. Currently, there are more than 130 research laboratories, universities and companies located in this area, and these have been achieving many leading-edge outcomes in research and development. Now that the city has entered its next phase, the Keihanna Research Complex project, called Keihanna RC, is stimulating organizations in this area to cooperate with others, both within and outside the area, in the pursuit of world-class innovations. The project is being promoted with a variety of tools: integrated R&D in different fields; human resources development; commercialization support; equipment sharing; and an innovation hub & overall promotion.

URL : <https://keihanna-rc.jp/en/>

### ■ Keihanna Open Global Service Platform for Accelerated Co-Innovation (KOSAINN)

KOSAINN is a platform to create joint implementation projects beyond Keihanna RC. 5 projects started from KOSAINN in 2018 and proceeded, locally and internationally supported by various players.



■ About Public Foundation of Kansai Research Institute (KRI)

- Location: Keihanna Plaza, Laboratory Bldg. 3F, 1-7 Hikaridai Seika-cho, Sorakugun, Kyoto, Japan (Kansai Science City)
- KRI is a public corporation established for the purpose of promoting construction of the science city.
- President: Yasuo Kashihara (Vice-Chairman of Kansa Economic Federation)
- URL : <https://www.kri.or.jp/en/>

■ About Advanced Telecommunications Research Institute International (ATR)

- Location: 2-2-2 Hikaridai Seika-cho, Sorakugun, Kyoto, Japan (Kansai Science City)
- Aiming to promote innovations and contribute to regional revitalization, ATR pursues world-leading, ingenious research achievements in computational neuroscience, life-supporting robots, wireless communications, and life science as well as their business developments, in collaboration between industry, academia and government.
- President: Tohru Asami
- URL : [https://www.atr.jp/index\\_e.html](https://www.atr.jp/index_e.html)

■ About the Elegant Monkeys Ltd. (TEM)

- Location: Weizmann St 14, Tel Aviv-Yafo, 6423914, Israel
- TEM develops its original AI technology called “Kenko Technology” to objectively evaluate the level of stress from vital signs and expands it to various healthcare products / services.
- Co-Founder, CEO: Maayan Yazdi
- URL : <https://www.elegantmonkeys.com/>

■ About KIMURA KOHKI CO., LTD

- Location: A-23, Uemachi, Chuo-ku, Osaka-shi, Osaka, Japan
- KIMURA KOHKI manufactures air-conditioning apparatus for industrial purposes and structural parts of air-conditioning apparatus.
- President : Keiichi Kimura
- URL : <https://www.kimukoh.co.jp/>

Contact:

○ Keihanna Research Complex

Contact person: Masaki Yamato, KRI; Makiko Tatsumi, ATR

Email : [rc-presspr@keihanna-rc.jp](mailto:rc-presspr@keihanna-rc.jp) TEL : 0774-95-5047 (KRI) or 0774-95-1176 (ATR)

○ KIMURA KOHKI CO., LTD

Contact person: Akio Sumita (Principal Advisor)

Email : [sumita@kimukoh.co.jp](mailto:sumita@kimukoh.co.jp) TEL : 050-3784-2633