

# KEIHANNA SCIENCE CITY 2022



---

# The Future Aspired by Keihanna Science City

~Keihanna Science City as a place for experimental study and implementation of advanced technologies for the realization of a next-generation smart city~

A city of innovation where new values and industries are continuously created

A city where anyone can live in safety and security

A city of sustainability where no one is left behind...

We are aiming for these realizations.

Keihanna Science City has been constructed and developed as a national project. Today, more than 30 years after its opening, it is home to over 150 research, educational, and cultural facilities. From information and communication to environment, energy, medicine, biotechnology and other fields, a wide variety of basic research is being conducted and utilized in society.

The city will further promote efforts to realize a smart city and create new smart lifestyles by utilizing historical and cultural resources and the rich natural environment, as well as smart technologies such as AI and IoT to solve social issues including urban mobility, healthcare, energy and disaster prevention.

Taking the opportunity of the upcoming "Expo 2025 Osaka-Kansai, Japan", the city aims to become "a world-class research and development open innovation hub" in order to fulfill its role in "contributing to the future of the world" and "creating knowledge and culture" as stated in the vision for the creation of a new city.





# City's Overview

Keihanna Science City is a science city being constructed and developed in the green hills of Keihanna, which extends over the three prefectures of Kyoto, Osaka and Nara, based on the Kansai Science City Construction Promotion Act. It is located within 30 km from the city centers of Kyoto and Osaka, and 10 km from the center of Nara City.

Together with "Tsukuba Science City" to the east, it is positioned as a national project with a total area of approximately 15,000 hectares, in which 12 cultural and academic research districts (about 3,600 hectares) are distributed.

## Significance and Philosophy

Creating a base for the new developments in culture, science, and research

Contributing to the development of culture, science, and research in Japan and around the world, as well as to the development of the national economy

Foundation of a wisdom-creating city that pioneers the future

\*From the Ministry of Land, Infrastructure, Transport and Tourism's basic policy on the construction of Kansai Science City

## Features

### Utilization of Private Sector Vitality

In the city construction, we will make maximum use of the vitality of the private sector, based on cooperation among various fields such as academia, industry, government, and residents. We will advance city development with appropriate cooperation and role-sharing among various fields.

### Cluster Type Development

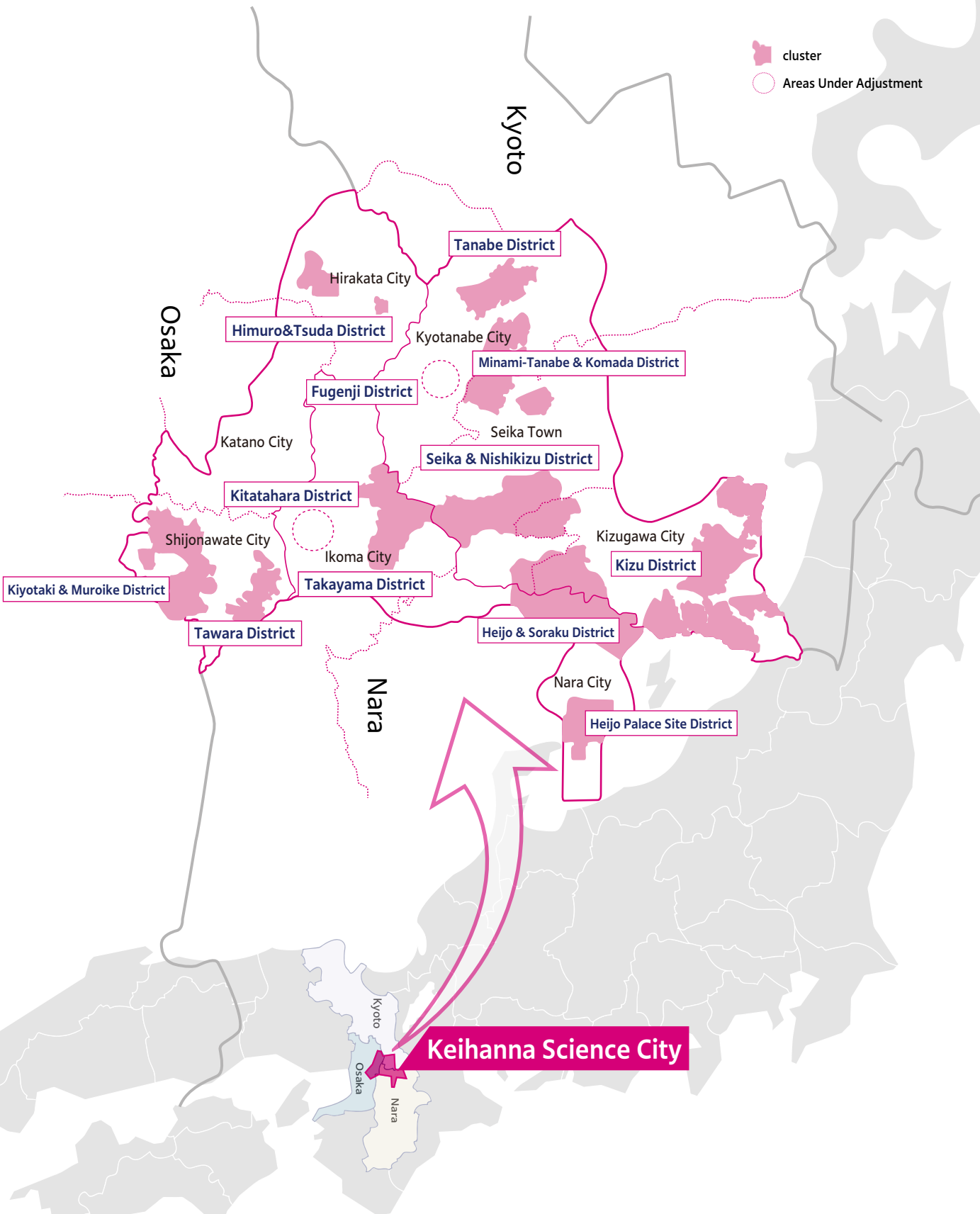
The 12 cultural and academic research districts will be distributed like a cluster of grapes, and development will be promoted in congruence with the conservation of the natural environment, pre-existing urban areas, and agriculture and forestry. Additionally, urban functions will be shared in accordance with the characteristics of each district to harmonize the city as a whole. By proceeding with development sequentially, commencing with areas where the conditions for urban development are in place, we can avoid excessive prior investments and major changes in plans, and development can be carried out systematically in stages.

### Composite Development of Research Facilities and Residencies

The development will include not only cultural and academic research facilities but also residential areas, aiming to create a complex city that combines academia and (lifestyle) culture. It will be possible to create a lively and attractive urban environment that is rooted in the lives of the residents, as well as to conduct specified demonstration experiments and evaluations with their participation.

### Establishment of a Global Open Innovation Hub

Japan's economic power is relatively declining in the international community due to intensifying global competition. To break through the current situation, we will build a system based on open innovation to quickly and reliably connect research and development investments to industrialization and increase GDP.



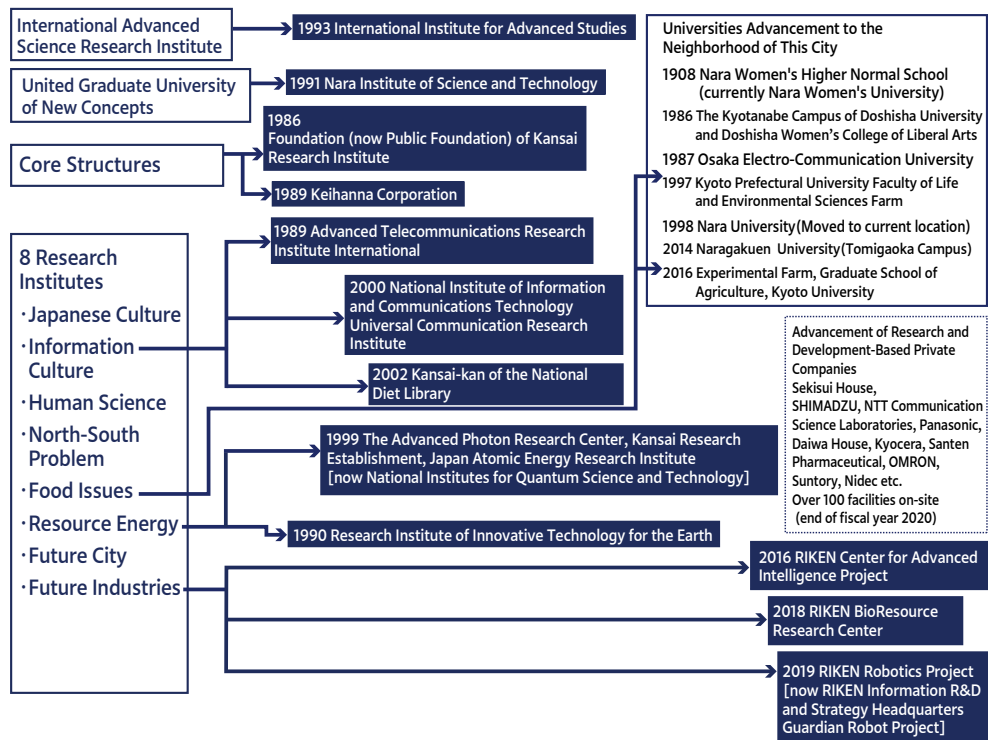
# Growth of the City

In 1978, the "Kansai Science City Research Council (commonly known as Okudakon)" was the starting point for the "proposal and conceptualization phase" of the project, and after its concretization of conception, in 1987, the Kansai Science City Construction Promotion Act was promulgated and enforced. Since then, the city has passed through three stages as a national project: the stage of concept realization, city construction, and advanced city management together with city construction.

Keihanna Science City is now in the latter half of the fourth stage which is the "creation of a new city", and is evolving and developing.

## Integration of Advanced Research Functions in Keihanna Science City

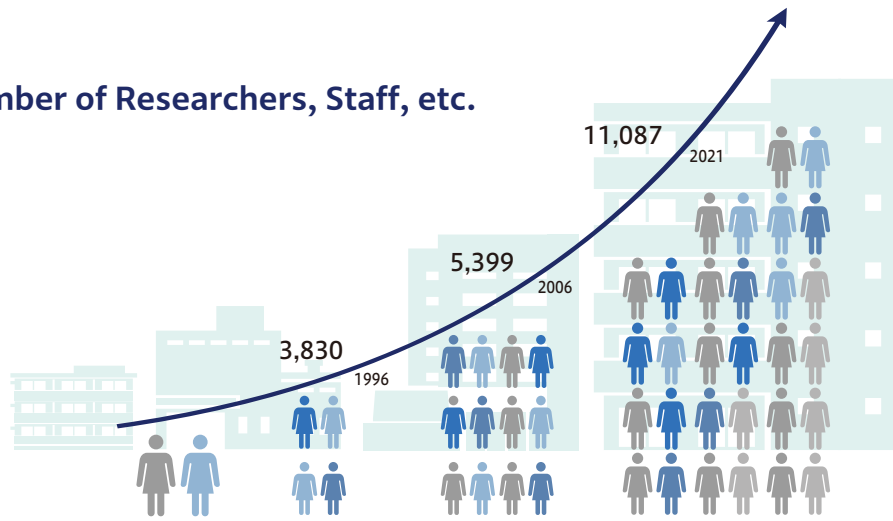
Proposal by Okudakon From 1978 to 1984	Second Stage Plan From 1996	Third Stage Plan From 2006	The Plan for Creating New City From 2016
Establishment of New Academic Research Institutions and the Formation of a Comprehensive Science and Research City to Meet the Issues of Human Society	<ul style="list-style-type: none"> <li>● Advanced Science and Research City</li> <li>● New Industry Creation City</li> <li>● Pilot Model City</li> <li>● Culture Creation and Exchange City</li> </ul>	<ul style="list-style-type: none"> <li>● Creation of New Industries from Keihanna New Culture, Science Research                             <ul style="list-style-type: none"> <li>· Industry-Academia-Government Collaborations (Research and Development-Based Industrial Facilities)</li> </ul> </li> <li>● A City Open to the World including Asia</li> <li>● A Creative City of Knowledge That Clears the Path to the Future</li> <li>● Urban Infrastructure and Transportation Infrastructure</li> </ul>	<ul style="list-style-type: none"> <li>● Development of Culture and Science Research</li> <li>● Promotion of Innovation                             <ul style="list-style-type: none"> <li>· open-innovation</li> <li>· Building a Keihanna Ecosystem</li> <li>· Global Collaboration and Exchange</li> </ul> </li> <li>● Next-Generation Smart City Development                             <ul style="list-style-type: none"> <li>· Demonstration Field Construction</li> </ul> </li> <li>● Network-Based City Management</li> </ul>



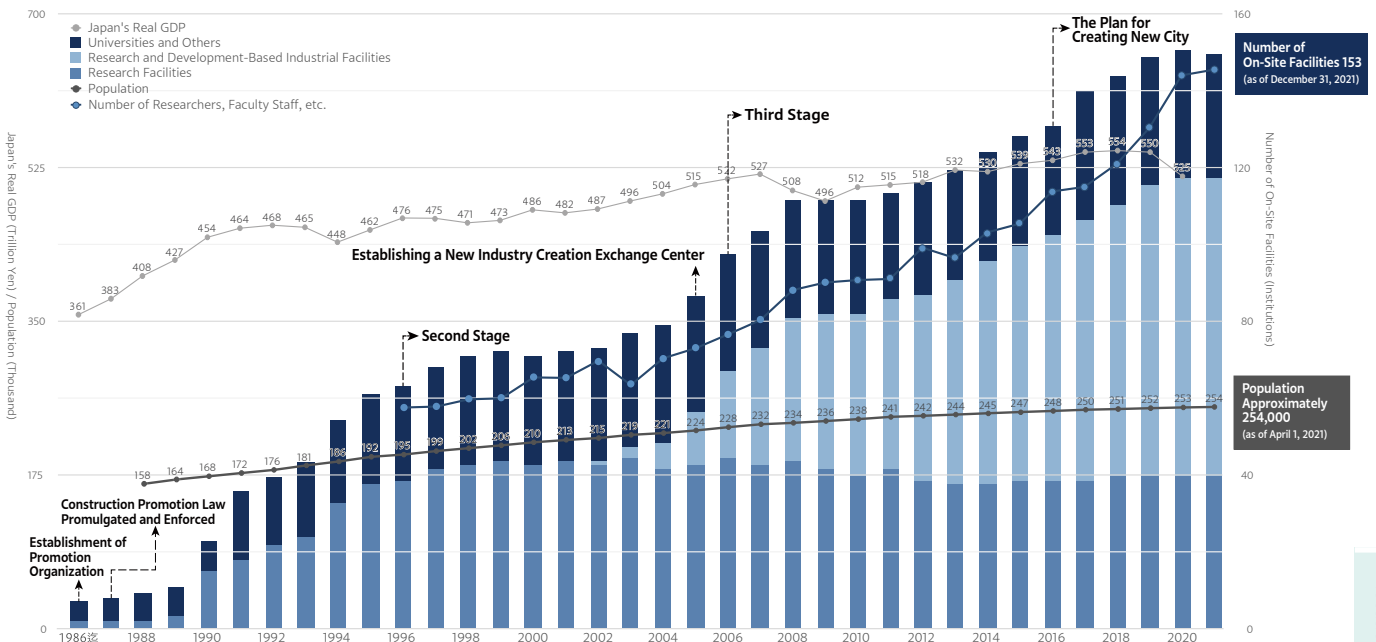
## Population Growth and Cluster Development

The population of Keihanna Science City currently exceeds 250,000 and continues to grow. Additionally, in some clusters such as the Kizu district, as a result of a major revision of the original plan in response to changes in society, the seven clusters of the Tanabe, Seika and Nishikizu, Heijo and Soraku, Himuro and Tsuda, Kiyotaki and Muroike, Tawara, and Kizu district have been largely completed, and an excellent urban area has been formed where cultural and science research facilities and residences coexist.

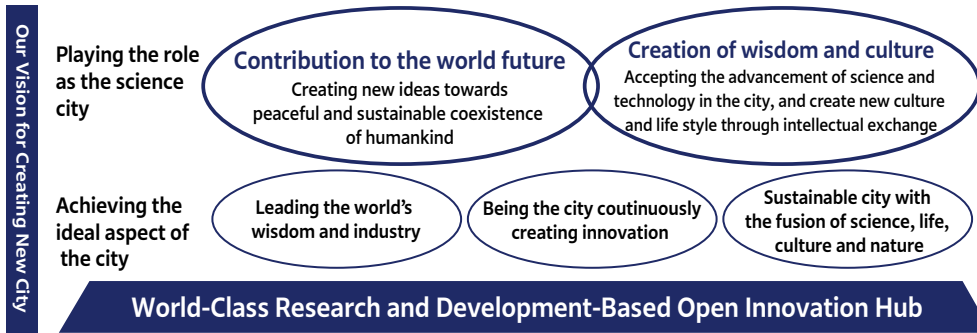
### Number of Researchers, Staff, etc.



### Trends of Number of Facilities as well as Population of Keihanna Science City, and the Transition of Japan's GDP.



# A New City Creation Plan

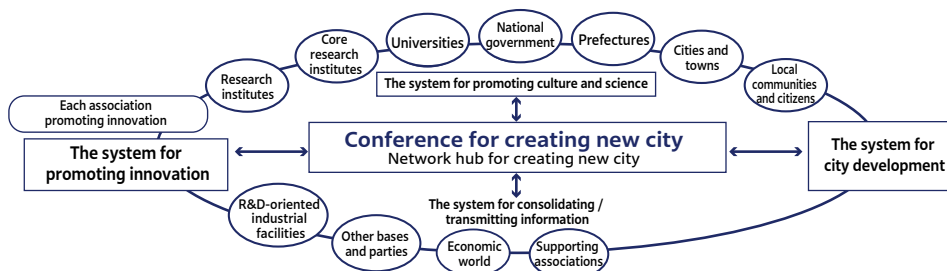


Keihanna Science City has come to the stage where it can fulfill its role as a cultural and academic research city in the entire Kansai region while increasing its presence in the world. The purpose of this plan is as follows.

- To create an area equipped with a sustainable "advanced urban management" system that enables the various subjects that congregate to mutually utilize the strengths of integration
- To realize new urban development that has never been seen before

With the aim of creating a new city in these two aspects, we present a new system and the direction of the city for the next 10 years, along with the "New City Creation Vision". We are currently reviewing the first five years of the plan and considering to level up the "New City Creation Plan" with the next 10 years in mind.

- Development of Culture and Academic Research**  
**1 Pioneering the frontiers of knowledge through the fusion of science and technology and culture**  
 Mainly to realize "a city that is a driving force in the world's wisdom and industry", we indicate the direction of efforts to "promote cultural and academic research" in the natural sciences, humanities, and social sciences that will be a leading force in the world's wisdom.
- Promoting Innovation**  
**2 Expanding new industries globally through open innovation**  
 Mainly to realize "a city that is a driving force in the world's wisdom and industry" and "a city that generates innovation in a sustainable manner", we indicate the direction of efforts in "innovation promotion" which will be presented in order to sustain the process from advanced research and development to the creation of new industries.
- Urban Development**  
**3 Taking the lead in the world to promote the development of next-generation infrastructure to foster smart lifestyles**  
 Mainly to realize "a sustainable city where science, life, culture, and the natural environment are integrated", we indicate the direction of urban development efforts to promote the formation of rich urban spaces and autonomous urban activities.
- Urban Management**  
**4 Establishing a networked management system that generates synergistic effects**  
 To precisely promote initiatives for new city creations, a network-type management system will be established in which organizations located in the city can participate on an equal footing to create new partnerships and enjoy synergistic benefits. We indicate the direction of the efforts to (1) the operation of a new urban creation council to serve as a network hub for the entire city, (2) a new mechanism for cooperation and collaboration in the above three areas, (3) and the establishment of a mechanism for information aggregation and dissemination that will serve as the basis for urban management.



## Development of Culture and Academic Research

The research on the "future image of the world" through cross-cutting collaboration between natural sciences and humanities / social sciences is being developed. The academic research toward a sustainable society, including environment / energy, population / food / water issues and medical and brain science is also being developed.

We promote education and learning programs that allow people to enjoy various kinds of "wisdom", and have created an environment where culture, academia, and science can be considered familiar to daily life and work. Furthermore, by taking advantage of the concentration of various facilities, human resource development is being promoted through collaboration between research and educational institutions and companies.

The Kansai-kan of the National Diet Library provides a vast amount of information resources that support these cultural activities and, as a core institution that serves as the intellectual hub of Keihanna Science City, the International Institute for Advanced Studies carries out various exchange activities to widely disseminate and return research results and intellectual resources to society.

### International Institute for Advanced Studies

[Sustainable Society](#) [Interdisciplinary Studies](#) [Problem-Seeking Basic Research](#)  
[Human Resource Development](#) [Regional Cooperation](#)



Since its founding in 1984, the International Institute for Advanced Studies has been working under the basic principle to "conduct research what should be researched for the future and happiness of mankind." With the aim of realizing a sustainable society, we practice to identify what are the fundamental issues facing mankind, and to explore and present the direction of solutions to these issues. In addition to research aimed at contributing to the development of the science city area, we also conduct a variety of exchange programs in cooperation not only with academia but also with industry, local municipalities, and residents, contributing to the realization of a safe, secure, and prosperous society.



Research Group on "Specific Efforts to Develop the Keihanna Science City Area: Through the Improvement of Health Literacy" (beginning in 2019)



IIAS Academic Camp : Junior Seminar (2019 summer)

<https://www.iias.or.jp/en>

### Kansai-kan of the National Diet Library

[Research library](#) [Digital library](#)  
[Information on science and technology](#) [Information on Asia](#)



The Kansai-kan of the National Diet Library is a large-scale research library that makes available a wide range of information in support of innovation at Keihanna Science City.

Domestic and foreign books, magazines, newspapers, databases, and electronic journals are available for browsing in the large reading room and study room.

Patrons may also request copies of library materials or browse digital materials via the Internet.

[Photo and logo: Provided by the National Diet Library]

<https://www.ndl.go.jp/en/kansai/index.html>



Reading Room



National Diet Library Digital Collections

# Innovation Promotion

## A Place for Co-Creation and Innovation Promotion

Keihanna Science City aims to create a "world-class research and development-oriented open innovation hub" that will contribute to the realization of next-generation smart cities. Emphasis is placed on co-creation with global players of both inside and outside the city, and efforts are being made to promote the commercialization of research and development while utilizing the demonstration environment through industry-academia-government-residential collaboration.

## Keihanna R&D Innovation Consortium

To create new businesses and new industries, the RDMM (Research & Development for Monodzukuri through Marketing) Support Center promotes industry-government-academia and cross-industry collaboration projects based on the suppositions of future society and markets with open innovation as the key, and promotes the utilization of research and development results. To date, a total of 70 companies have participated in the four working groups (agriculture and food, health, mobility and energy, and new theme creation), creating new businesses and services.

Responsible for operations, the RDMM Support Center is promoting the following projects as a central organization for one-stop support of industry-academia-government collaboration from the initial stage of corporate research and development to commercialization.

### K-PeP(Keihanna Public Road Driving Demonstration Test Platform)

This is Japan's first corporate passenger and resident participation type public road driving demonstration test platform for new technologies such as autonomous driving and the establishment of next-generation intelligent transport systems.

We are contributing to the creation of new technologies and industries through the following core activities.

- Provision of facility equipment such as KICK. ● Provision of Keihanna public road driving demonstration test facilities.
- Application on behalf of government and police agencies. ● Acceleration of demonstration tests using "Club Keihanna".



### Club Keihanna

This is a resident-participation organization established in November 2016 aiming to reflect residents' opinions and ideas in the development of new services and products, urban development, etc., and currently has about 3,000 members from all over Japan. Based on requests from companies, universities, and other organizations in industry, government, and academia, we analyze the market through questionnaires and surveys of residents, consider ideas through resident-participation workshops, and promote demonstration experiments in collaboration with residents, contributing to the creation of new businesses and industries, urban development, and other activities.

<https://www.kri.or.jp/rdmm/club> (Information for members)

[https://www.kri.or.jp/conso/club\\_2/club.html](https://www.kri.or.jp/conso/club_2/club.html) (Information for companies)



### AIJ Platform(ASEAN, IORA and JAPAN Innovation Collaboration Platform)

We collaborate with science cities, research institutes, universities, and companies in ASEAN and IORA (Indian-Ocean Rim Association) countries to provide mechanisms for innovation and the creation of new businesses and industries (international human resource exchange programs, reciprocal use of research institutes, prototyping, and marketing facilities in each country). Additionally, in cooperation with JETRO and other partner organizations, we provide support for local collaboration projects of companies seeking to develop joint technologies and products with ASEAN and IORA countries.

<https://www.kri.or.jp/conso/global/global.index.html>



## Research Promotion Council of Keihanna Info-Communication Open Laboratory

The purpose of this council is to promote research and development through industry-academia-government collaboration in fields related to the NICT Keihanna Info-Communication Open Laboratory, to draw out the ICT potential of the Kansai region, and to promote the development of new technologies, human resources, and the creation of new industries. To promote and support research and development in the fields related to the Open Laboratory, the council plans research and development projects, supports the formation of consortiums, promotes the use of facilities, disseminates research and development results, and exchanges information with related organizations.

<https://www.khn-openlab.jp/>

## Keihanna Research Complex Promotion Council

The "Keihanna Research Complex (RC)" is an activity to create innovation by promoting R&D based on cross-field integration, human resource development, and commercialization support in an integrated manner through cooperation among institutions located in Keihanna Science City, and deepening of collaboration with institutions outside the region. With support from the Ministry of Education, Culture, Sports, Science and Technology (MEXT) and the Japan Science and Technology Agency (JST) for three years and six months from October 2016 to March 2020, the council has built a platform to promote global open innovation, established seven new companies, obtained over 1.1 billion yen in investments, and established an experimental field with the participation of local residents, establishing the "Keihanna Global Innovation Ecosystem".

The Research Complex Promotion Council is working to further develop Keihanna Science City's unique global innovation ecosystem by utilizing its achievements in various projects, mainly the following.



### Support for Startup Businesses

KGAP+ (Keihanna Global Acceleration Program Plus) is a global startup support program in which domestic and foreign startup companies selected from innovation hubs around the world in partnership with domestic startup companies and the Advanced Telecommunications Research Institute International (ATR), collaborate with major Japanese companies to demonstrate products, services and concepts. During the three-month program, ATR, together with the Research Complex Promotion Council and other cooperating organizations and mentors, will support the participating companies by matching them for collaboration, utilizing the functions of the experiment city of Keihanna Science City and providing mentoring and seminars.



### Support for Open Innovation Promotion

"KOSAINN (Keihanna Open Global Service Platform for Accelerated Co-Innovation)" is a platform for global open innovation to implement demonstration projects for problem solving and business development of Japanese companies and other organizations.

ATR will support open innovation by utilizing its extensive domestic and international network to support team building involving startup companies and researchers with expertise that can enhance the pioneering nature of the project. Furthermore, in 2021, ATR collaborated with governmental innovation promotion agencies in Israel and Canada to launch "KOSAINN+", in which startup companies participate in demonstration projects with the support of both agencies.



### Human Resources Exchange Support

The "Keihanna International Internship Program (KIIP)", supported by ATR which has extensive experience in accepting foreign nationals, aids the recruitment and acceptance of interns from overseas universities and business schools to Japanese companies. The program supports the integration of young foreign talents and exchanges with overseas universities.

### Strengthening Startups and Ecosystems

A startup support system has been established in collaboration with leading overseas innovation institutions to further strengthen the startup ecosystem functions.

In July 2020, the "Osaka-Kyoto-Hyogo-Kobe Consortium", which includes Keihanna, was selected by the Japanese government as "a Global Hub City" under the "Startup Ecosystem Hub City program". The consortium will select promising entrepreneurs from Japan and abroad and produce startups that can be active on the global stage through mentoring, aiming to develop the entire Kansai region as a startup development hub.



## Functions and Facilities That Support Innovation Promotion

Not only large corporations, national research institutes and universities, but also to more than 100 small and medium-sized startup companies are located in Keihanna Science City.

Several incubation and support facilities have been set up to support new companies in their startup and growth.

### Keihanna Open Innovation Center @KYOTO (KICK)

Keihanna Robot Technology Center PoC (proof of concept) base  
Rental research space 5G base station Convention facility



The "Keihanna Open Innovation Center (KICK)" is an open innovation hub that supports advanced research and development in the fields of health and medicine, energy and ICT, agriculture, and culture and education, with the collaboration of KYOTO Industrial Support Organization 21 and Kyoto Prefecture.

<http://kick.kyoto/>



#### PoC (Proof of Concept) Center, KICK (PoC-K)

Using KICK's indoor Keihanna Robotics Engineering Center, outdoor sites such as the circular road, and 5G (5th generation) base stations, we provide comprehensive support for PoC (Proof of Concept) demonstrations through technology development and experiments with robots and drones, automated driving experiments, as well as the Meta-Comfort Lab (MC-Lab) and 3D printers, and Fab Space where laser cutting machines, etc. can be used.



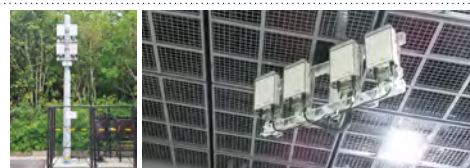
#### Keihanna Robotics Engineering Center

Equipped with robots for research and development and positioning equipment, the Keihanna Robotics Engineering Center supports the development and introduction of various next-generation robot technologies that contribute to improving our lives and productivity, including autonomous robot systems, human-robot systems, and robot-robot coordinate systems.



#### 5G Base Stations

There are two 5G (5th generation) base stations located outdoors and one inside the Keihanna Robotics Engineering Center, enabling demonstration experiments for the development of products using 5G technology.



#### Meta-Comfort Lab (MC-Lab)

The MC-Lab is supplied with equipment that integrally controls information that affects the five senses, such as air conditioning (temperature and humidity), lighting, scenery from the windows, video, sound, and aroma, and enable data analysis of human psychological, behavioral, and biological information to support future commercialization.



#### Fab (Fabrication) Space

By renting out 3D printers, laser processing machines, CNC milling machines, etc., this space will serve as a hub for prototype production and development for manufacturing companies, and will also support the nurturing of a manufacturing culture by holding various events and seminars.



## Keihanna interaction Plaza・Keihanna Plaza Hotel

[Research Spaces and Labs](#) [Startup Support](#) [Conference Rooms](#) [Hotel](#) [Conventions](#)

Keihanna Plaza, a composite facility for promoting cultural/academic exchange and research, consists of leasing offices including for start-ups, a hall that can accommodate 1000 people, conference halls, and a hotel. We support the business of tenant companies, invite conventions concerning cultural and academic research, and hold events.

It can also be used for exhibitions, seminars, networking events, and accommodation trainings.

<https://www.keihanna-plaza.co.jp/english>

<https://hotel.keihanna-plaza.co.jp/>  
global online travel agencies available

けいはんなプラザ

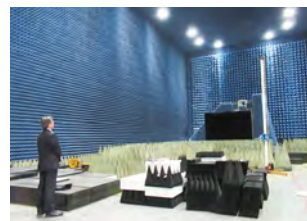


## Advanced Telecommunications Research Institute International (ATR)

[Research and Business Development](#) [Global Collaboration](#)  
[Support and Entrepreneurship Support](#) [Open Innovation Promotion](#)

We are working to build a global innovation ecosystem in Keihanna Science City through brain imaging research support services including MRI imaging and consulting by ATR-Promotions; promoting research and business development by opening the wireless research environment to public and providing consulting services; support for accepting researchers and interns from other countries by leveraging our extensive experience and achievements; implementation of support programs for startups in Japan and overseas and support for project creation to solve challenges of companies and other entities through open innovation; operation of coworking spaces.

[https://www.atr.jp/index\\_e.html](https://www.atr.jp/index_e.html)



Anechoic Chamber



fMRI



KGAP+Batch1 Group Photo

## Doshisha Center for the Promotion of Venture Business

[entrepreneurship](#) [second founding](#) [industry-academia collaboration](#) [regional exchange](#)  
[manufacturing and engineer exchange space](#)

D-egg is an incubation facility operated by the Organization for Small & Medium Enterprises and Regional Innovation, Japan (SME) in cooperation with Kyoto Prefecture and Kyotanabe City at Doshisha University's Kyotanabe Campus. Residents of this facility will receive various subsidies from Kyotanabe City, as well as extensive support for overall management from the incubation manager stationed here.

<https://www.smrj.go.jp/incubation/d-egg/>



Kyotanabe  
Monozukuri Workshop D-fab

## Takayama Science Plaza

[Support for education and research](#) [Industry-academia collaboration](#)  
[Community activities](#) [Science](#) [Offices for rent](#)

This activity base is operated by the Foundation for Nara Institute of Science and Technology so as to provide assistance to NAIST, industry-academia cooperation and regional interactions. It also encourages children's curiosity for science through participating in "Science Experiment Class", "Science Land", etc.

<http://www.science-plaza.or.jp>



Children's Science Square

## Core Research Institutions

In Keihanna Science City, advanced research and development in various fields such as environment and energy, information and communication technology (ICT), bioscience, optical science, and robotics is being conducted.

### Advanced Telecommunications Research Institute International (ATR)

[Computational Neuroscience](#) [Deep Interaction Science](#) [Wireless and Communications](#)  
[Life Science](#) [Global Innovation Ecosystem](#)



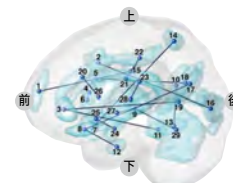
We aim to contribute to innovation from science and technology and regional revitalization by promoting pioneering and innovative research and development, social implementation of world-class results, and building of a global innovation ecosystem through close collaboration with industry, government, and academia both domestically and internationally. We are conducting research and development in the fields of brain information science to investigate brain functions and apply consequential results; deep interaction to deeply understand the interactions between

human-robots; wireless and communications to achieve highly reliable telecommunications technology and radio wave utilization; and life science to promote cross-disciplinary science, and are working to commercialize results through affiliated companies and "Keihanna ATR Fund".

[https://www.atr.jp/index\\_e.html](https://www.atr.jp/index_e.html)



Android for Daily Dialogue "ERICA"



a network decoded from fluctuations in brain activity

### National Institute of Information and Communications Technology (NICT)

Universal Communication Research Institute (UCRI)

[Information and Communication Technology](#) [Universal Communication](#)  
[Multi-language](#) [Dialogue](#) [Behavior Support](#)



UCRI is one of Japan's leading R&D centers in the field of AI and is engaged in social implementation and R&D related to multi-language, dialogue, behavior support support technologies aiming to achieve universal communication among the people of the world. We will contribute to solving social issues and creating new values by eliminating the barriers of language, knowledge, and data usage, in international business, elderly care, and environmental risk reduction, etc.

<https://ucri.nict.go.jp/en/>



Prototype simultaneous interpretation system



Web-based Knowledge Disseminating dialog Agent (WEKDA)

Predicting mobility risks by cross-data analysis

### Research Institute of Innovative Technology for the Earth

[Global warming](#) [CCUS](#) [Global warming mitigation scenarios](#)  
[Biorefinery](#) [Membrane reactors](#)



We are conducting research and development of innovative energy and environmental technologies as a COE for global warming countermeasure technology. These include developing CCS technology that captures CO2 from the exhaust gas of power plants and steel works and stores it in an underground aquifer, biorefinery technology to produce fuels and chemicals from non-food biomass, systematic study regarding policies and measures to mitigate global warming through the analysis and the evaluation of various countermeasures, and research on inorganic membranes that are expected to be applied to the separation and purification of hydrogen, which is essential for a hydrogen society.

<https://www.rite.or.jp/en/>



coryneform bacteria

Production of biofuels and chemicals from non-food biomass using microorganisms



Visualization of CO2 distribution in a sample rock using X-ray CT

## Nara National Research Institute for Cultural Properties

[research on cultural properties](#) [Nara Palace Site](#) [wooden tablet excavation survey](#) [immovable cultural property](#)

The institution is located in Nara City, adjacent to the Heijo Palace Site. This is an organization that comprehensively surveys and researches cultural properties, mainly ruins, buildings, gardens, and cultural landscapes, which are called real estate cultural properties. Activities extend not only to within Japan but also overseas including other Asian countries. Additionally, it provides training, cooperation and advice to officials in charge of cultural properties internally and externally.

<https://www.nabunken.go.jp/english/>



The Main Building of Nara National Research Institute for Cultural Properties



Remains were excavated and preserved during the construction of the government building

## RIKEN

[Disease modeling/Drug discovery research and Platform development/Disease-specific iPS cells](#)  
[Machine learning/Artificial Intelligence \(AI\)](#)  
[Computational theory of mind/Autonomous robot that can make people feel the "heart"](#)  
[Collaboration with industry and academia/Co-creation](#)

As Japan's sole comprehensive research institute in the natural sciences, RIKEN conducts research and development in a wide range of fields at many sites in Japan and overseas. With the goal to generate world-class research results, RIKEN has established a number of "science and technology hubs" that collaborate with industry and universities to bring about innovation. Research in Keihanna Science City is being conducted by teams from the Guardian Robot Project (GRP) and the RIKEN Center for Advanced Intelligence Project (AIP), as well as the iPSC-based Drug Discovery and Development Team at the RIKEN BioResource Research Center (BRC).

<https://www.kobe.riken.jp/en/about/map/keihanna/>



Human iPS cells and Drug discovery



Robot "Nikola"

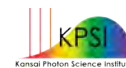
## National Institutes for Quantum Science and Technology (QST)

Kansai Photon Science Institute

[Quantum Science and Technology](#) [High-Intensity Lasers](#) [Quantum Scalpel](#)  
[Industrial and Medical Applications](#) [The Kids' Science Museum of Photons](#)

Following the successful development of powerful lasers such as J-KAREN, an ultra-short pulse laser of the world's top class, we work on academic, medical, and industrial applications for high powered lasers, including development of a compact accelerator for use in particle beam cancer therapy, practical use of remote and non-contact methods to detect defects in concrete using lasers, and a palm-sized non-invasive blood glucose level sensor and more.

<https://www.qst.go.jp/site/kansai-english/>



World's top class ultra-short pulse high intensity laser J-KAREN

## Universities

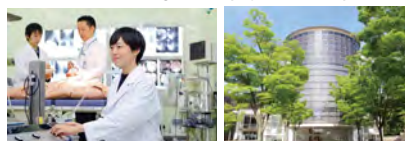
Universities in Keihanna Science City are actively developing industry-academia collaborations with research institutions and companies. The universities also holds annual public lectures in collaboration with the National Diet Library under the keyword "Delivering wisdom from Keihanna".

### Osaka Electro-Communication University (Shijonawate Campus)



[Information Education](#) [Sports](#) [Games](#) [ICT](#) [Community Contribution](#)

The Faculty of Medical Science and Health-Promotion and the Faculty of Information Science and Arts are established at the Shijonawate Campus. The Faculty of Medical Science and Health-Promotion trains clinical engineers, physical therapists, and sports leaders. The Faculty of Information Science and Arts has the Department of Digital Games, the Department of Games and Media, and the Department of Computer Science. All of these departments are developing human resources who can play active roles in the coming community of Society 5.0.



<https://www.osakac.ac.jp/en/>

### Experimental Farm, Graduate School of Agriculture, Kyoto University



[‘Next-generation’ agricultural technology](#) [‘Green energy’ farm](#)

The Experimental farm of Kyoto University (Kizu Farmstead) with a site area of 24.6ha is equipped with the latest facilities and equipment, which are used to carry out agricultural education and research and to produce agricultural products. Also, as a base for the development and demonstration of the ‘Next-generation’ agricultural technology that creates a prosperous future, we aim to build an agricultural production model "Green Energy Farm" that simultaneously produces renewable energy and agricultural production.



<http://www.farm.kais.kyoto-u.ac.jp/>

### Kyoto Prefectural University (Seika Campus)



Faculty of Life and Environmental Sciences Farm / Industry-Academia-Government  
Collaboration Research Hub Facility

[Bioscience](#) [Regional contribution](#) [Industry-academia cooperation](#)

This site consists of two areas which include the "Industry-Academia-Government Collaboration Research Hub Facility Area", where research results are returned to the local community, prefectural residents, and the public, and the "Faculty of Life and Environmental Sciences Farm Area", where students learn about nature and practice farming. The total site area is approximately 16 hectares, which is about the size of 3.5 Tokyo Domes. The "Faculty of Life and Environmental Sciences Farm Area" promotes the advancement of education and research. As a new research center for industry-academia-government collaborations, the "Industry-Academia-Government Collaboration Research Hub Facility Area" is engaged in joint research on plants, the environment, and pharmaceuticals, as well as the creation of university-launched ventures and new industries, and the accumulation of enterprises.



Faculty of Life and Environmental Sciences Farm  
<http://cocktail.kpu.ac.jp/agricul/ufarm>



Industry-Academia-Government  
Collaboration Research Hub Facility  
[http://www.kpu.ac.jp/contents\\_detail.php?frmid=2649](http://www.kpu.ac.jp/contents_detail.php?frmid=2649)

### Doshisha Women's College of Liberal Arts



[Education](#) [Pharmacy and Nursing](#) [Social studies](#)

[Arts and Design](#) [Global communication](#)

Established in 1986, the Kyotanabe Campus has four faculties with approximately 4,000 students which include the Faculty of Liberal Arts, the Faculty of Contemporary Social Studies, the Faculty of Pharmaceutical Sciences, and the Faculty of Nursing. Together with the Imadegawa Campus located on the north side of the Kyoto Imperial Palace in Kyoto City, we aim for further development as a comprehensive university for women with 6 faculties, 11 departments, 1 major, and 5 graduate schools.



The Symbol of Kyotanabe  
Campus, Yuwakan

<https://www.doshisha.ac.jp/en/index.html>

## Doshisha University (Kyotanabe Campus・Gakken Toshi Campus)

[Science and Engineering](#) [Life Science](#) [Data Science](#) [Sports](#) [Language and Culture](#)



The Kyotanabe Campus is equipped with state-of-the-art experimental facilities and equipment, information and education facilities, as well as a sports environment.

Research activities centering on medical-engineering collaboration are being conducted at the Gakken Toshi Campus.

<https://www.doshisha.ac.jp/en/index.html>



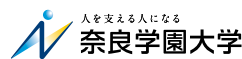
Gakken Toshi Campus



Kyotanabe Campus

## NARAGAKUEN UNIVERSITY

[Human Education](#) [Health Science](#) [Nursing](#) [Rehabilitation](#)



Nara Gakuen University will integrate the Sango and Tomigaoka campuses into the Tomigaoka Campus with the aim of improving the quality of its educational content and further development.

With the integration of the campuses, we will improve the learning environment and focus on the further education of "human power".

<http://www.naragakuen-u.jp>



## Nara Institute of Science and Technology (NAIST)

[Information Science](#) [Biological Science](#) [Materials Science](#)



In addition to research in the established academic fields of information science, biological science, and materials science, proactive efforts in these fields' interdisciplinary areas make it possible to generate international-level research results that will create the next generation of our society. Through advanced education based on these results, human resources who pursue science and technology with high aspirations as well as researchers who play leading roles in the international community are trained, contributing to the progress of science and technology and the development of society.

<https://www.naist.jp/en>



### The university in close cooperation with Keihanna

## Nara Medical University

[MBT](#) [Overcoming Intractable Diseases](#) [Overcoming COVID-19](#)



We have expanded community development based on Medicine, MBT(Medicine-Based Town) structure. We aim to contribute to society based on medical science by applying a vast store of knowledge of doctors, nurses, and others not only to the treatment of patients, but also to medically proper products, housing, and everything related to community development.

In order to accelerate the realization of MBT structure, General Incorporated Association MBT Consortium was established by centering around Nara Medical University.

At present, there are nearly 200 representative companies from all the industries in various fields in Japan participating in it. <https://www.naramed-u.ac.jp/university/english/index.html>



## Nara Women's University

[Institution of Female Top Education](#) [Gender Equality](#) [Knowledge Hub](#) [Female Leaders Education](#)



We provide advanced research to create culture and science through academic research, and education to develop female human resources who will lead the next generation. This year, we will establish the first Faculty of Engineering in women's university to produce creative engineering personnel needed by society. With the mission of expanding the opportunities for women to play an active role, we will be take the lead of an era for women to be active under collaboration with related organizations and communities.

<http://www.nara-wu.ac.jp/>



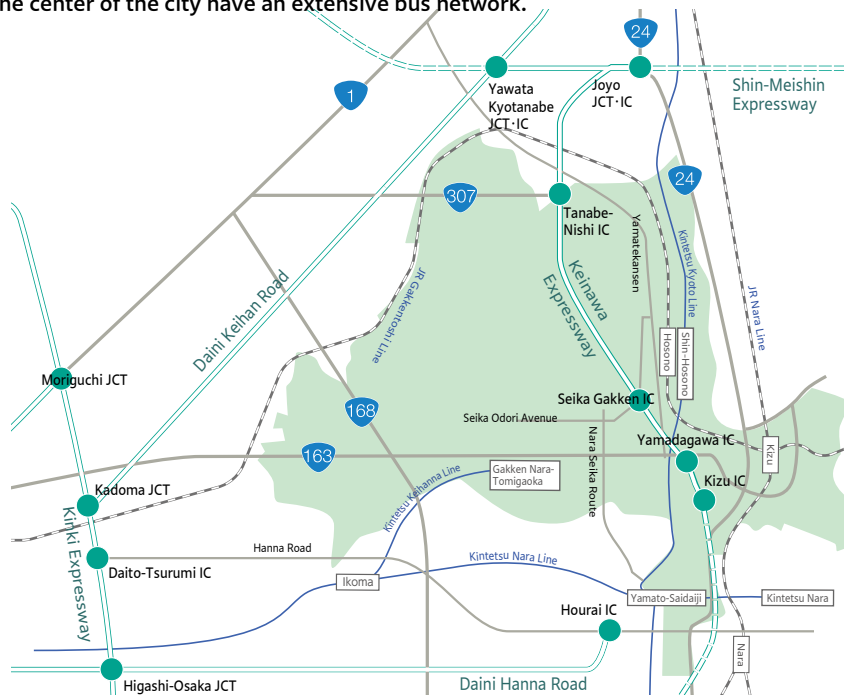
## Urban Development

### Major Roads and Rail Networks

Regarding expressways, the Shin-Meishin Expressway (scheduled to be fully operational in 2024), the Daini-Keihan Road (fully operational in 2010), the Keinawa Expressway (fully operational in 2000 in the Kyoto area [between the Joyo JCT/IC and the Kizu IC]), and the Yamato-Kita Road (fully-scale commercialization in 2018) have been constructed.

As for local roads, the Yamate Kansen from the Kyoto area and the National Route 163 Gakkentoshi Connection Road from the Osaka area have been improved to enhance access.

In terms of railroads, the Kintetsu-Keihanna Line (Ikoma - Gakken Nara Tomigaoka) opened in 2006, and the Seika and Nishikizu district in the center of the city have an extensive bus network.



#### Expressways

- Shin-Meishin Expressway  
Joyo - Hachiman/Kyotanabe (Opened in 2017)  
Otsu - Joyo, Hachiman/Kyotanabe - Takatsuki (Opening planned for 2024)
- Daini Keihan Expressway (Fully opened in 2010)
- Keinawa Expressway  
Kyoto Section (Opened in 2000)  
Yamatokita Road (Fully opened in 2018)

#### Roads

- Yamatekansen  
Nat. Rt. 1 - Seika-odori Street (Opened in 2018)
- Nat. Rt. 163 (Widened in Seika)  
Inuidaninishi Intersection Overpass (Opening planned for 2023)
- Nat. Rt. 163 (Kizuhigashi Bypass)  
Central Kizu - Higashichuosen Road (Opened in 2014)  
Kizu River Bridge - JR Overpass (Opened in 2020)
- Nat. Rt. 163 (Kyotaki - Ikoma Road)  
Kyotaki - Shimotawara (Widened to 4 lanes in 2013)  
Takayama Intersection (Completed in 2015)
- Nat. Rt. 24 Joyo-Ide-Kizugawa Bypass (Project launched in 2019)

#### Railways

- Kintetsu Keihanna Line  
Ikoma - Gakken-Nara-Tomigaoka (Extended in 2006)
- JR Gakkentoshi Line  
Nagao - Matsuiyamate (Second track added in 1989)
- JR Nara Line  
Yamashirotaga - Tamamizu (Second track planned for 2023)

### For the Realization of Next-Generation Smart Cities

Efforts to advance the research and development of products and systems necessary for the formation of next-generation smart cities and their social implementations are being promoted through various projects.

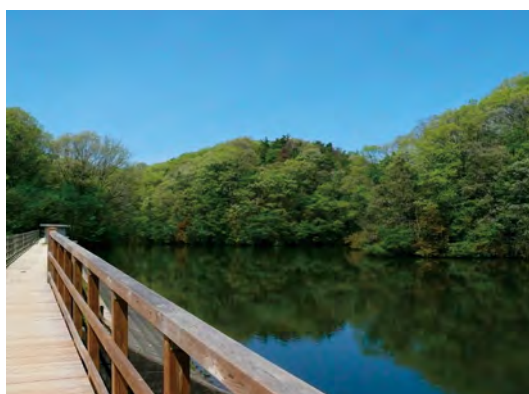
In the "Smart Keihanna Project", which was adopted as a model project by the Ministry of Land, Infrastructure, Transport and Tourism, efforts are being made in the Seika and Nishikizu districts to introduce last one mile mobility and AI-based life support services. In the Tawara district, smart city initiatives are also being developed through cooperation with public and private sectors using transportation, coexistence with nature, energy conservation, safety and security, and resource circulation as keywords.

The content and results of these efforts are being widely disseminated both domestically and internationally through various ways such as the Kyoto Smart City Expo.

## Rich Nature, History, and Climate

Keihanna Science City, which extends over the three prefectures of Kyoto, Osaka, and Nara, is rich in greenery, and while parks and green spaces have been systematically laid out, there is also an "SATOYAMA" landscape environment that is being actively preserved and utilized by residents.

In the Kizu-kita district (Kaseyama), where urban development has been halted, "SATOYAMA" activities are being carried out in cooperation with the government, citizens, and businesses based on the "Biodiversity Kizugawa City Community Collaborative Conservation Action Plan". In the Hoshida Park and the Muroike Park, which were developed by the Osaka Prefectural Government with the aim of achieving "coexistence between people and nature", trails and suspension bridges have been built around the waterfront so that people can get close to the rich nature and enjoy observing plants and wild birds. Keihanna is also a treasury of Japan's representative historical and cultural heritages, and in particular, the Heijo Palace Site is positioned as one of the clusters in the cultural and academic research area, and restoration of the Daigokuden and Suzakumon Gate is underway, reminding us of the past Nara period.



### Keihanna Commemorative Park (Kyoto Prefectural Kansai Culture and Science City Commemorative Park)

[strolling style garden](#) [environment of Satoyama scenery](#)  
[cultural exchange base](#) [nature experience](#) [scenery of the four seasons](#)



The park was developed as part of the 1200th anniversary of the Heian-kyo Capital in commemoration of the construction of Keihanna Science City (Kansai Science City), and opened in April 1995. The park covers an area of 24.1 hectares, of which 15.1 hectares are dedicated to preserving the satoyama environment and expressing the culture and climate of Japan. As a hub of exchange in Keihanna Science City, this park is a place of relaxation for a wide range of people from all over the world to the local community, where they can experience the nature of the four seasons, culture, and art.

<https://keihanna-park.net/en/>



### Nara Palace Site Historical Park

[Historical Park](#) [Nara Palace Site](#) [Heijokyo](#) [Sightseeing](#) [History and Culture](#)



Heijo Palace was the central part of Heijo-kyo, the capital of Japan during the Nara Period (710-794), and was home to the Daigokuden, where the Emperor would appear for state ceremonies; the Dairi, which was the emperor's residence; the Chodoin, which served as a place for political affairs, ceremonies, and feasts; and various other government offices where many people worked. Suzakumon Square, which features a cafe, restaurant, shops selling local products, and guidance facilities for the entire Heijo Palace Site, has revived the bustling atmosphere of the Suzakumon area after 1300 years.

(Government-managed site)<https://www.heijo-park.go.jp/>

(Prefecture-managed site)<https://www.suzakumon-heijokyo.com/>



# Introduction of location facilities

Agriculture, Forestry and Fisheries	Construction	Food	Paper / Printing
Chemical / Chemical products	Pharmaceuticals	Plastic	Rubber / Rubber products
Glass / Earth and stone products	Steel / Non-ferrous metals	Metal products	Machinery
Electrical equipment	Transportation equipment	Precision / Medical equipment	Other manufacturing industries
Telecommunications	Commercial	Finance / Insurance	Government / Local government
Universities / Educational institutions	Research institutes	Cultural facilities / Parks	Service industries

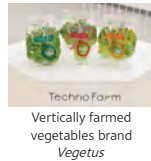
Agriculture, Forestry and Fisheries

## Spread Co., Ltd. Techno Farm Keihanna

[AgriTech](#) [Robotics and IoT](#) [Sustainable agriculture](#)  
[FoodTech](#) [GLOBALG.A.P. Certification](#)

World's first large-scale automated vertical farm, Techno Farm Keihanna, delivers stable production of 30,000 heads of lettuce per day, regardless of the weather. At the on-site R&D facility we develop state-of-the-art cultivation and IT-related technologies.

<https://technofarm.com/en>



Construction

## KINDEN CORPORATION Kyoto Institute

[Electrical equipment](#) [Information and communication equipment](#)  
[Air conditioning / sanitary equipment](#) [Interior equipment](#)

As an electrical engineering company of the Kansai Electric Power Group, we will play a part in the stable supply of electric power, strive to create excellent equipment and services such as buildings and factories, focusing on social contributions as well as developing our business as a comprehensive facility management company based on the three pillars of "energy", "environment" and "information & communication"

<https://www.kinden.co.jp/>

Construction

## Sekisui House Ltd. Comprehensive Housing R&D Institute

[Building Technology](#) [Lifestyle Solutions](#) [Research and Development](#)  
[Performance Testing](#) [Experience-Based Facility](#)

This institute consists of the Technology R&D Institute, which pursues research and development into Sekisui House's proprietary building technologies, as well as the experience-based facilities, Nattoku Kobo (Studio) and Tomorrow's Life Museum Kansai which use human experiences to create the perfect homes, and stand at the front line of home research.

<https://www.sekisuihouse-global.com/solutions/02/>

Construction

## Daiwa House Industry Central Research Laboratory

[Construction](#) [Energy](#) [Environment](#) [Welfare](#) [Town planning](#)

We are conducting various research related to life and architecture in order to realize a better life and solve future social issues. There is also a tour facility (Reservation required. It may be suspended depending on the corona infection situation).

<https://www.daiwahouse.co.jp/lab/>

Food

## Oriental Bakery Corporation, Kyoto Plant

[Functional food](#) [Hygiene](#) [Athlete](#) [Robotics](#) [Commercial bread](#)

As a commercial bread maker, we have the No. 1 share in Kansai area. In recent years, we have expanded into the Kanto region, aiming to become the No. 1 commercial bread maker in Japan.

<https://www.orientalbakery.co.jp/>

Food

## Kyoto Techno Center Kyoeiseicha Co., Ltd

[Functional food](#) [Green Tea](#)

Kyoeiseicha has been manufacturing and selling a variety of green tea, black tea and coffee products for over 180 years since its establishment in 1836. At Kyoto Techno Center, in addition to the mass production with the latest equipments, research and development work is actively conducted for innovation and creation of high value added tea products.

<https://www.kyoeiseicha.co.jp/>

Food

## Suntory World Research Center

[Superior flavor and taste](#) [Health science](#) [Botany](#) [Water science](#) [Sustainability](#)

A research and development base (completed in May 2015) that integrates the functions of basic research and technology development of the Suntory Group. The Institute of Health Sciences, Safety Science Institute, Suntory Global Innovation Center, Suntory Foundation for Life Sciences Bioorganic Research Institute, etc., moved in, and we are now working on the world's most advanced research in the fields of Pursuit of superior flavor and taste, Health science, Botany, Water science, Sustainability.

<https://www.suntory.co.jp/company/research/swr/>

Food

## Genuine R&D Co., Ltd. Kyoto Institute

We are conducting research to discover new ingredients from natural products such as plants, animals, and food residues and develop them as raw materials for cosmetics and functional foods. We also have a GMP-compatible supplement factory, where we undertake contract manufacturing such as food and cosmetics coordination.

<https://genuiner.com/>

Food

## Japan Juice Co., Ltd. Kyoto south center

[Agricultural activity](#) [Product development](#) [fruit](#)

We process fruits ordered from all over Japan and develop new products. Based on our management philosophy of "Let's continue to eat good-tasting food", we aim to be a company that contributes to the revitalization of agriculture and is needed in the production areas.

<http://www.japan-juice.co.jp/>

Food

## Boul'mich Co., Ltd. Hirakata Research Factory

Development, manufacture and sale of confectionery products.

<http://www.boulmich.co.jp>

Food

## Fukujuen CHA Experience Park

[Tea](#) [Culture](#) [Experience](#) [Tourism](#) [Research](#)

This park is a place where people can meet people, people can meet culture and culture can meet culture, over tea. We would like you to learn even more about the way of tea (Cha), which has been enjoyed and loved by people throughout the world. Enjoy lush green tea gardens and experience a tour of facilities.

<https://cha.fukujuen.com/>

Paper / Printing

## Asahi Printing Co., Ltd. Kyoto Creative Park

[Packaging](#) [Labels](#) [Instruction Leaflets](#) [Pharmaceuticals](#) [Cosmetic](#)

Asahi Printing Co., Ltd. manufactures and sells printed packaging materials for pharmaceuticals and cosmetics. At Kyoto Creative Park, we conduct research for and develop new products, which provide our customers with new value-added features, and the technology and manufacturing methods that realize such features. Kyoto Creative Park also functions as part of Asahi's manufacturing bases for pharmaceutical and cosmetic packaging materials and contributes to faster delivery to our customers in West Japan. With the adoption of the cutting-edge manufacturing lines and production control system as well as the security system, the manufacturing environment of Kyoto Creative Park is established in high quality.

<https://www.asahi-pp.co.jp/>

Chemical / Chemical products

## ADCOAT CO., LTD.

[Anti Corrosion](#) [Improve Workspace](#) [Plastic Free](#) [VCI Paper](#) [Oil Free](#)

Do you have a problem with rust? We manufacture and sell the evaporative rust-proof paper adpack, which has been delivered to about 5,500 companies in Japan and overseas. Please consult with our rust prevention manager about rust.

<https://www.adpack.jp/en/>

Chemical / Chemical products

## New Japan Chemical Co., Ltd. Kyoto R&D Center

[Create](#) [Chemical](#) [Lubricants](#) [Plastic & Coating Materials](#) [R&D](#)

On the occasion of the 100th anniversary of our founding, we have established this laboratory as a base for achieving further growth. We will continue to refine our unique technologies, such as hydrogenation technology, and provide chemical materials that contribute to the development of society through co-creation with a variety of partners.

<https://www.nj-chem.co.jp/en/>

Pharmaceuticals

## Santen Nara Research and Development Center

[Ophthalmology](#) [R&D](#) [People Centricity](#) [Global expansion](#)

We opened in 1996 to carry out cutting-edge research and development activities in the field of ophthalmology. After that, we expanded our facilities, and by integrating functions necessary for drug development, established a management system to carry out research and development.

<https://www.santen.co.jp/ja/>

Pharmaceuticals

## Rohto Pharmaceutical Co., Ltd. Rohto Research Village Kyoto

[Health Care](#) [Cosmetic](#) [Regenerative Medicine](#)  
[Functional Food](#) [Global](#)

In the field of health care and beauty care, we are working on strengthening our fundamental technology, approaching cutting-edge regenerative medicine technology, taking initiation in anti-aging and preventive health care, and promoting joint research with domestic researchers.

<https://www.rohto.co.jp/>



Food

## Morishita Jintan Co., Ltd. Osaka Techno Center

[Jintan](#) [Health Care](#) [Drug development](#)  
[Capsule technology](#) [Crude drug research](#)

As the center of research institutes that focus on researching new materials and developing new capsule products, it is the main factory equipped with laboratories and research facilities, manufacturing Jintan silver pills as well as filling and packaging products under our own brand.

<https://www.jintan.co.jp/>



Seamless capsule

Paper / Printing

## UEROKU PRINTING CO., LTD.

[Printing](#) [Luxury beauty package](#) [70th anniversary](#)

With the motto "Together With Our Customers", we continue to create corporate value by providing attractive luxury beauty packages including cosmetics with our unique expression technology and high quality service, toward the goal of 120% customer satisfaction. By establishing an integrated production system with the state-of-the-art equipment, we are ready to quickly and precisely respond to the advanced needs of our business partners, thus acquiring their high praise and deep trust.

<https://www.ue6.jp/>



eco-friendly products  
(Pulp Mold)

Chemical / Chemical products

## Cathy Chemical Industry Co., Ltd. Cathy Technical Center

With the motto of high-performance and highly safe manufacturing, we are a research and production base that develops and manufactures cosmetics, quasi-drugs, and new technologies. We aim to develop new materials and technologies and create high-quality products in pursuit of "creating beautiful bare skin" which we have cherished for 70 years since our founding.

<https://cathy.co.jp/>

Chemical / Chemical products

## Technoble Co., Ltd

[Cosmetics](#) [Quasi-drugs](#) [Functional ingredients](#)  
[Research and development](#) [Safe and reliability](#)

Since our founding in 1961, we have been conducting R&D, manufacturing and sales of functional cosmetic materials. As a research-and-development-driven company, we have developed safe, secure, and unique high-quality functional cosmetic materials with the aim of contributing to the beauty of people around the world. We have received high praise from the domestic as well as international cosmetics market.

<https://www.technoble.co.jp/>

Pharmaceuticals

## Taiko Pharmaceutical Co., Ltd. Kyoto Plant/R&D Center

Founded in 1946, we manufacture and sell consumer products. Our main products are a line of over-the-counter medicines called "Seirogan" for gastrointestinal medication, and a line of infection control products called "Cleverin" which uses chlorine dioxide. Our business at the Kyoto plant / R&D center involves investigating the safety and efficacy of our products, developing new items, improving our existing product line, and testing product performance.

<https://www.seirogan.co.jp/>

Plastic

## Atecs Co., Ltd. Kyoto Office Production Research and Development Center

Based on the concept of "creating art with plastic", we manufacture composite products that integrate high-performance resins, metals, and dissimilar materials by insert molding, and those products are widely used in industrial, in-vehicle, and consumer equipment packages. In particular, we are focusing on the development and manufacture of in-vehicle inverter parts and chargers for eco-cars such as EVs, HVs, PHVs, and FCVs.

<http://www.atecs-corp.co.jp/>

Plastic

## Sunceed Co., Ltd.

[IML](#) [Environment](#) [Food containers](#) [Weight reduction](#)  
[Injection molding](#) [Eco-friendly](#)

This R&D facility manufactures convenient, functional and eco-friendly disposable food containers using the advanced IML (in-mold labeling) technology with the latest equipment.



IML container

<https://sunpla.co.jp>

Plastic

## Kyoto Plant R&D Center, Naigai Kasei Co., Ltd.

[Medical](#) [Cleaning](#) [Automation](#) [Molding](#) [Plastics](#)

We manufacture and provide stable supply of medical-use plastic products that are clean and safe and respond to the current needs, to support medical care, and continue to play the role as a pipeline of life.

<https://www.naigai-kasei.jp/>

Rubber / Rubber products

## Kyoto Technical Center, Meiwa Rubber Co., Ltd.

The center was built to replace our Osaka former plant, which long served as our central manufacturing plant in western Japan. Integrating our cutting-edge Research and Development department and Production department, it serves as our new manufacturing center in the western region. As a comprehensive rubber-roll manufacturer, we are devoted to developing and providing environment-friendly products while keeping in mind the preservation of our precious planet for generations to come.

<https://www.meiwa-rubber.co.jp/>

Glass / Earth and stone products

## MIZUHO Co., LTD.

[Stone for precision machining](#) [Superfinishing stone](#)  
[Grinding Wheel](#) [Horn grinding stone](#) [Precision machining](#)

Since its establishment in 1930, we have been manufacturing, selling and developing grindstones for precision machining. Mizuho Technical Lab develops fine-grained diamond grindstones and CBN grinding grindstones and demonstrates their performance in order to meet the needs for higher accuracy and efficiency. Recently, we are researching and developing the surface roughness of the work piece aiming at the nano level or less.



<http://www.kk-mizuho.jp>

Steel / Non-ferrous metals

## Souraku Industry Co., Ltd.

[Wire drawing dies](#) [Drawing dies](#) [Electrical discharge machining](#)  
[Precision metal mold](#) [Carbide product](#)

Design, manufacture and sale of various wear-resistant metal mold and tools, mainly made of cemented carbide, and research and development of related technologies.

<http://www.sohraku.com/>

Steel / Non-ferrous metals

## TATSUTA Electric Wire and Cable Co., Ltd., Tatsuta Technical Center

[Functional film](#) [Functional paste](#) [Medical device parts](#) [Fine wire](#)

In the rapidly changing functional materials market, to accurately grasp the needs of our customers and continue to explore the seeds of the times, we have a "research laboratory" and a "functional film factory" that are the core of our research and development. We aim to become a top share supplier of products in advanced fields by establishing a system that can immediately produce new products that we have diligently developed.

<https://www.tatsuta.co.jp/>

Metal products

## Askk Co., Ltd.

[Prototype parts](#) [High-mix low-volume](#) [Made-to-order](#) [Quick delivery](#)  
[5-axis machine](#)

Processing of metal-resin prototype parts Processing of a wide variety, small lot of precision parts Short delivery processing Design, processing, assembly and sales of wire stripping machines for recycling

<https://www.assk.co.jp/>

Metal products

## UEDA INDUSTRY CO., LTD

[Metal stamping](#) [Mold design](#) [Mold production](#)

We work on press processing, mold design and manufacturing of bicycle parts, light electrical parts, building parts and all kinds of parts. In order to convey joy and excitement to the people who receive the products, we will break down technological barriers and pursue manufacturing that touches our hearts.

<https://www.uedaindustry.co.jp/>

Metal products

## KAWACHI KINZOKU CO., LTD

[Precision processing](#) [Prototype development support](#) [Lot production](#)  
[Vietnam factory](#)

We are ready to provide precisely cut products on a wide range of level, from a single prototype to mass production.

<http://www.kawachikinzo.co.jp>

Metal products

## Kitamura Co., Ltd.

We are engaged in material fusing, can manufacturing, and machining of various machine parts including those of marine diesel engines construction machinery, and hydraulic equipment.

<http://www.kitamura-iron.co.jp>

Metal products

## Kyoto Press Kogyo Co., Ltd.

[Metal processing](#) [Pressing](#) [Precision metal sheeting](#) [Cutting](#)

We not only design and manufacture press dies and press parts, but also manufacture cut/machined products by utilizing metal processing technology. We are constantly pursuing new processing technologies with the aim of improving quality and reducing prices of prototypes and mass-produced products made of iron as well as non-ferrous metals.

<http://kyoto-press.co.jp/>

Metal products

## Sakamoto Seiki Co., Ltd.

[Metal pipe processing](#) [Water heater internal piping](#) [Gas stove internal piping](#)  
[Bathroom plumbing](#) [Petroleum equipment internal piping](#)

Material procurement, terminal processing, bending, joint welding, leak inspection, packing and shipping for internal piping of water heaters, gas stoves, kerosene heaters, bathrooms, etc. Materials: copper, stainless steel, iron, aluminum, brass, etc.



Examples of pipe processing

Metal products

## TAKAYOSHI KINZOKU CO., LTD.

Development and manufacture of precision-machined parts and microfabricated parts (from design to assembly).

<https://www.takayosi.co.jp/>

Metal products

## MANYO TOOLS CO., LTD.

[Precision machining](#) [Tool holder](#)

A manufacturer of tool holders catering to various processing work for automobile, motorcycle, ship, and aircraft parts as well as machine tools, we are committed to using our own technology to develop and manufacture tool holders that cannot be made by other companies.



<http://www.manyo-tools.co.jp>

Machinery

## ASHIDA MFG CO., LTD Head Factory

We develop technology and devices to form Carbon Fiber Reinforced Plastic (CFRP), often used in aircrafts, and manufacture autoclaves for molding CFRP. We also develop, design and manufacture heat-treatment systems to meet the needs of various industries.

<http://www.ashida-mfg.co.jp/>

Machinery

## WIST CO., LTD.

[Automation Labor-Saving Equipment](#) [Original Robot](#) [Robot System](#)  
[Development of Micromputer Control Equipment,etc.](#) [Development of Production Machinery](#)

Development, design and production of bottlewashing machines, filling machines, cappers, filling and packaging lines, robot systems, automated labor-saving devices, original robots, motion & communication equipment, etc.



Co-Robotic Palletizer

<https://www.wist.co.jp/>

Machinery

## Kowa Industrial Co., Ltd.

Design, manufacture and sale of drying devices for the textile, film, paper and food industries.

<http://kowaindustry.com/>

Machinery

## SHIMAKAWA SEISAKUSYO CO., LTD.

[VOC treatment](#) [Heat](#) [Drying](#) [Custom-made](#) [Battery material](#)

Our company's head factory handles the entire line from research to design to production of industrial dryers, heat treatment furnaces, exhaust emission purifiers (deodorization devices), oxide ethylene purification units and JIS thermal shock test devices. We can also make various order-made products.



SGV type rotary kilns

<https://www.shimakawa.co.jp/>

Metal products

## Kyoto Laboratory, Technoflex Corporation

Flexible hoses and expansion joints.

<https://www.technoflex.co.jp/>

Metal products

## MOLITEC STEEL Co., LTD. Keihanna R&D Center

[Hardened steel strip](#) [Sheet metal processing parts](#) [Development products](#)  
[Indoor laundry poles](#) [Automatic winding type ordinary charging stands for EV / PHEV](#)

We work to contribute to society through providing value to our customers through our steel. This center uses our core technologies such as press processing, spring processing, and heat-treatment processing to develop new products and technologies. We also develop and manufacture dies used in the manufacturing department.



Automatic winding type ordinary charging stands for EV / PHEV

<https://molitec.co.jp/english/index.html>

Machinery

## Inoue Manufacturing Co., Ltd

[Hospital / Elderly facility](#) [Reheating cart](#) [Hot / Cold serving car](#)  
[Food safety and security](#) [Resolving labor shortage](#)

We manufacture and sell reheating carts and hot / cold serving cars for serving meals in hospitals and elderly facilities. Products with increased added value boast a high repeat rate and aim to contribute to society through "food safety and security".

<http://www.inoue-seisakusyo.co.jp>

Machinery

## SEW-EURODRIVE JAPAN CO., LTD Kyoto Factory

[Reduction gear](#) [Motors](#) [Geared motor](#) [SEW](#) [Industrial gear](#)

We are the Japanese subsidiary of SEW-EURODRIVE, a speed reducer manufacturer leading the world's motor market. SEW has assembly plants in 51 countries around the world. As a leading company with the largest market share in the field of geared motors. SEW provides a wide range of speed reducer based on its unique module systems. SEW is striving to produce high-quality products all over the world through the concentration of manufacturing processes and the decentralization of assembling processes.

<https://www.sew-eurodrive.co.jp/top.html>

Machinery

## GNES Corporation

[Non destructive inspection](#) [Ultrasonic flaw detection](#) [Contract Inspection](#)  
[Air-coupled ultrasonic flaw detection](#) [Elastic modulus measurement](#)

Development, production and sales of off-line or in-line nondestructive inspection and ultrasonic flaw detection systems for spacecrafts, aircrafts, trains, trams, automobiles, etc. and contract inspection services of parts and materials thereof.



Ultrasonic flaw detection equipment for hollow axes of bullet trains

<http://www.gnes.co.jp/en/>

Machinery

## Dynamic Tools Corporation

[Machine tools](#) [Machine elements](#) [Automotive parts](#)  
[Medical parts](#) [Environmental measure](#)

Focusing on product development of machine elements for ultra-precision machining such as automobile parts, aircraft parts, medical parts, and eco-friendly equipment, we carry out research and domestic / overseas export sales.



UV curable adhesive "Blue Photon" for processing medical parts

<https://www.dynamictools.co.jp/>

## Machinery

### Hitachizosen Corporation Environment Business Headquarters Business & Product Development Division

[Environment](#) [Waste water treatment](#) [Waste treatment](#)  
[Water supply & sewage treatment](#)

Aiming to be a solution partner that contributes to the realization of a sustainable, safe and secure society, this office serves as our development base for new water treatment technology, to realize our goal of creating a comfortable water environment.

<https://www.hitachizosen.co.jp/english/>

## Machinery

### Yoshiizumi Industry Corporation

[Food processing machines](#) [Slicers](#) [Washing machines](#)

We develop and sell various types of food slicers with the motto of "cutting various ingredients more practically and more beautifully." In recent years we have also been focusing on developing food processing machines to be used for such purposes as preparation, washing and drying, and offer them as systematic sets.



"Super Fishmonger"  
fillet slicer

<https://yoshiizumi.com/>

## Electrical equipment

### Kyoto Techno Center M-System Co., Ltd.

[Industrial electronic equipment](#) [Reliability tests](#) [Anechoic chambers](#)  
[Vibration inspection devices](#)

At this Center, we perform type tests on all product models, including not only new products but also design-changed products due to improvements, et. al. Equipped with 90 types of test equipment, including an anechoic chamber, we are working to improve the reliability of products useful for next-generation automated control.

<https://www.m-system.co.jp/>

## Electrical equipment

### Kyocera Corporation, Keihanna Research Center

In order to construct a bright future for people and society (information, communication, mobility, environment/energy, medical/healthcare, etc.), we are making an endeavor to create materials and devices based on analysis and numerical analysis technologies.

<https://global.kyocera.com/>

## Electrical equipment

### Burley Plus CO., LTD

Our company serves as a production and research/Design/development of the press dies and plastic molds. We manufacture electric connection parts used for indoor wiring, electric vehicles, LED lighting, solar panels, and many other products.

## Electrical equipment

### HIRAIDENKEIKI Co., Ltd. Reiwa-Keihanna Office

[Transformer](#) [Voltage Transformer](#) [Current Transformer](#)  
[Operation Transformer](#) [Zero Phase Current Transformer](#)

Japan's only 100-year-old manufacturer specializing in instrument transformers. In November 3rd year of Reiwa, we jointly received the Shibusawa Award sponsored by the Japan Electric Association together with electric power companies and switch makers.

<http://www.hiraidenkeiki.co.jp/>

## Machinery

### HIRANO TECSEED Co., Ltd.

[Coating](#) [Lithium-ion battery](#) [5G](#) [Sheet casting](#) [Industrial machinery](#)

HIRANO TECSEED is an industrial machinery manufacturer who is committed to creating valuable, cutting-edge technologies through a constant pursuit to perfect the expertise in the field of "heat and circulating air". The Kizugawa Plant is in charge of research on cutting-edge mechatronics technology to respond to the market. Since market needs change rapidly, we are working on the development of advanced mechatronics technology, in-house production and high precision of the heart of the machine, and new equipment.

<https://www.hirano-tec.co.jp/en/>

## Electrical equipment

### Icom Inc. Narayama Research Institute

[Amateur radios](#) [Commercial radios](#) [Maritime communications](#)  
[Satellite communications](#) [IP trancivers](#)

We are engaged in R&D of wireless devices and wireless application devices that we manufacture and sell, R&D of various wireless communication methods, R&D of digital communication systems, and R&D of wireless application systems.

<https://www.icom.co.jp/>

## Electrical equipment

### Keihanna Technology Innovation Center, Omron Corporation

[Robotics](#) [Artificial Intelligence](#) [Sensing](#) [Health Care](#)  
[Research and Development](#)

Based on OMRON's core technology "Sensing & Control + Think", we aim to expand human possibilities and create a future in which people can play more active roles, by solving social issues with innovative technology.

<https://www.omron.co.jp/>

## Electrical equipment

### Nidec Center for Industrial Science and Technology

In order to accelerate the growth of the NIDEC Group, we promote open innovation of advanced technologies by strengthening manufacturing capabilities and utilizing networks with universities, research institutions and the private sector.

<http://www.nidec.com/ja-jp/>

## Electrical equipment

### Panasonic Holdings Corporation Corporate Technology Sector

As a research lab for Panasonic HQ, this facility is engaged in research and development of innovative technologies in pursuit of its mission of pioneering new businesses that will contribute to a better society and world in ways that will wow their customers.

<https://panasonic.jp>

## Transportation equipment

### Shinwa Precision Machinery Co., Ltd

[Precision processing](#) [Construction machinery / hydraulic parts](#)  
[Marine diesel engine parts](#)

We are mainly engaged in machining and assembly of precision hydraulic and marine diesel engine parts. We set up a factory in Vietnam for further growth and development under a management system which can create high value-added products with customer trust, reliability and satisfaction set as our motto.

<https://www.shinwamp.co.jp/english/>

Transportation equipment

## SEIWA INDUSTRY CO., LTD. KIZUGAWA ECT CENTER

[Vehicle electrical components](#) [Battery cables](#)  
[High-mix and small-lot manufacturing](#) [Monozukuri](#)

At Kizugawa ECT Center, we manufacture battery cables for construction machinery and agricultural machinery manufacturers. With our unique technology and production method that supports a wide variety of small lots, we have achieved high quality, high performance, and reliable delivery, and are highly acclaimed by the manufacturers.

<https://www.seiwa-oj.co.jp/>

Precision / Medical equipment

## Will Co., Ltd.

[Semiconductors](#) [Electronic components](#) [Fine processing](#)  
[Precision parts](#) [Lathe processing](#)

Development and manufacturing of fine electronic parts and components (semiconductor inspecting probes) and fine medical equipment parts.

<https://www.will-mfg.com/>

Precision / Medical equipment

## SEIWA OPTICAL Co., Ltd.

[Development](#) [Semiconductor manufacturing equipment](#) [FPD](#) [Optics](#) [Mechatronics](#)

We utilize optical technology for industrial facilities such as manufacturing devices for semiconductors and FPDs, and develop and manufacture products that are ahead of the times. We manufacture products under a comprehensive management system from consultation on product specifications to development, manufacturing and quality control, to meet the customer needs.



Semiconductor and FPD exposure machine

<https://www.seiwaopt.co.jp/>

Other manufacturing industries

## ICHIGUCHI CORPORATION

[Grinding](#) [Polishing](#)

We are engaged in development and production of abrasive cloth, non-woven cloth with abrasive coating, and abrasive tools made with diamond-coat polishing cloth. We provide unique products catering to the customer's specific demand, handling a wide variety of customer needs.

<http://www.ichiguchi.co.jp/>

Other manufacturing industries

## KAJI CORPORATION

[Healthcare](#) [Rehabilitation](#) [GEL](#) [Cushion](#)

-Development, manufacturing, and sales of products using proprietary developed material, EXGEL.  
- EXGEL excels in texture quality, slow recovery feature, pressure redistribution ability, shape retainability, and shock absorbability. It has earned a solid reputation in the field of healthcare and rehabilitation, as wheelchair cushions and bedsores prevention pads for operating tables. Its reliability and achievement have led to its application in various fields (including hair dressing and cosmetology, automobiles, and motor sports), as well as an increase in overseas markets.



Wheelchair cushion for preventing bedsores using EXGEL

<https://exgel.jp/en/>

Other manufacturing industries

## silex technology, Inc.

[Wireless solution](#) [Private 5G](#) [Network](#) [Telecommunication equipment](#)  
[Video transmission](#)

We are a research and development company with strengths in high-quality wireless technology that we provide to our customers' equipment and systems in the industrial and commercial fields, as well as flexible customer support. A local 5G base station capable of device verification is available in a co-creation space.



Local 5G Space "THE BASE"

<https://www.silextechnology.com/>

Precision / Medical equipment

## EC frontier Co., LTD

[Electrochemistry](#) [Analysis devices](#)

Manufacture and sale of measuring instruments and reaction cells / electrodes in the field of electrochemistry, and research and development of analysis devices applying electrochemistry

<https://ec-frontier.co.jp/>

Precision / Medical equipment

## SHIMADZU Future Collaboratory

[Health Care](#) [AI](#) [Robotics](#) [Advanced Analysis](#) [Bioscience](#)

SHIMADZU Future Collaboratory has built in Keihanna Science City to expand the program of innovation at Shimadzu Corporation. The new laboratory will further drive research and development. The goal is to develop meaningful solutions to the challenges of today and help transform the delivery of innovative products for the benefit of everyone.



Multi-Device Biometric System "HUME (Human Metrics Explorer)"

<https://www.shimadzu.com/>

Precision / Medical equipment

## Takazono Corporation Takazono Technology Incorporated

[R&D](#) [Packaging machines](#) [Pharmaceutical equipment](#) [Medical equipment](#) [Dispensing](#)

As a top-class pharmaceutical packaging machine manufacturer in Japan, we provide products to domestic and overseas markets. Research and development department of the Takazono Group is located in this office, where we are developing hardware and software for medical devices and related devices

<http://www.takazono.co.jp>

Other manufacturing industries

## ANGEL PLAYING CARDS MFG KYOTO CO.LTD Kansai Science City Manufacturing and Reseach Center

[Global](#) [Playing cards](#)

ANGEL PLAYING CARDS MFG KYOUTO CO.,LTD has produced numerous world firsts an unique items. These have now become a standard of the gaming industry, bringing new value to customers and game lovers.

<http://www.angelplayingcards.com>

Other manufacturing industries

## KPS Industry Co., Ltd.

[Household well pump](#) [Various pump products](#) [Piston types of compressor](#)  
[Pump applied products and its products](#)

Development, planning and manufacture of embedded pumps and air pumps, as well as medical and living environment-related equipment

<http://www.kps-k.co.jp>

Other manufacturing industries

## Sakamoto Sekkei Technical Development Lab.

[Press die design](#) [3D data](#) [model production](#)  
[product development support](#) [medical equipment](#)

We provide a set of services from material procurement for internal piping of water heaters, gas stoves and kerosene stoves, to end shaping, bending, joint welding, leakage inspection, and delivery. Materials: copper, aluminum, brass, stainless steel, iron, and more



6-axis robot "KUKA"

<https://www.s-sst.com>

Other manufacturing industries

## SAWA CORPORATION

[Metal Stencil Cleaner](#) [Mask Condition Checker](#) [SMT](#)

With ultrasonic science as our core technology, we develop and propose products which meet customers' requirements. We mainly handle development, manufacture and sales of metal mask cleaning devices used for cream solder in the SMT board mounting process, cleaning devices of metal masks and mesh screens used in the process of manufacturing electronic components and semiconductors, and cleaning devices of gravure cylinders used in package printing.

<https://www.sawa-corp.co.jp/>



Other manufacturing industries

## SOWA Technical Institution KEIHANNA

[FRP](#) [plastic](#) [bolts](#) [polishing materials](#) [grindstones](#)

SOWA has established its own research laboratory here in Keihanna, the new cultural capital, as a new first step to strengthen FRP material research and technological development capabilities. We will continue to work on the discerning manufacturing that is born from free thinking and passion.

<https://www.sowakasei.com/>



Other manufacturing industries

## TAKAZONO LEAVES CO., LTD.

[Employment of people with disabilities](#)  
[special subsidiary companies](#) [reuse](#) [eco-friendly](#)

Takazono Leaves Co., Ltd. is a special subsidiary of Takazono Co., Ltd. established for the employment of individuals with disabilities. Takazono Leaves prioritizes compassion and consideration for challenged individuals to ensure meaningful opportunities to contribute to society through gainful employment.

<https://www.takazono-leaves.co.jp/>

Other manufacturing industries

## Marutaka Co., Ltd.

[Rice bag](#) [Rice related products](#) [Good Design Award](#)  
["MOTERUN PACK" \(No required plastic bag\)](#)

We deal in various products related to the distribution and sale of rice, mainly the packaging materials (rice packages). Under the basic policy of "SHAPING YOUR NEEDS, CREATE YOUR DREAMS", we design, develop, and sell our own eco-friendly products including the patented "Moterun Pack (No take-away bags are required)". We are at the forefront of the rice package industry.

<https://www.marutaka-pax.co.jp/>

Other manufacturing industries

## Nijo Maruhachi Co., Ltd. Nijo Maruhachi Ceremony Research Laboratory

[Uchikake](#) [Ceremony](#) [Traditional industry](#)

This lab conducts research into various ceremonies seen in human life from multifaceted perspectives, and develops and disseminates information on products and designs using traditional techniques handed down in Kyoto.

<http://www.nijo.co.jp>

Other manufacturing industries

## TOEISANGYO CO., LTD.

[High-performance brushes](#) [electrostatic flocking brushes](#) [pile fabrics](#)  
[electrophotographic brushes](#) [electrophotographic equipment parts](#)

Development, production and sales of brushes and related parts for electronic photo equipment (copiers, fax, printers), including cleaning brushes, anti-static brushes, and transcription brushes.

<https://www.toeisangyo.jp/>

Other manufacturing industries

## NEURON JAPAN CO., LTD.

[Energy](#) [Resilience](#) [Water supply](#) [Welding](#) [Plasticity processing](#)

Neuron is creating the next generation of plant systems utilizing our CORE technologies, such as sophisticated craftsmanship (precision manufacturing of pipes, forming, and welding) and highly-skilled engineering (design, analysis, inspection & measuring).

<https://www.neuron.ne.jp>

Other manufacturing industries

## PROTEX·JAPAN Inc.

[Beauty](#) [Cosmetic](#) [Hair care](#) [OEM](#)  
[Daily miscellaneous goods](#)

Research, development and manufacture of cosmetics and quasi-drugs. Technical and sales consulting services.

<http://www.protexjapan.co.jp/>



HAHONICO Keratex  
Fiber shampoo  
Fiber treatment  
Fiber oil

Other manufacturing industries

## Photon Co., Ltd.

[Electromagnetic field analysis](#) [simulation](#) [customization](#)  
[contract analysis](#) [electromagnetic field analysis](#)

Our company develops and sells a line of electromagnetic field analysis software named PHOTO Series, which models products and parts using electromagnetic phenomena and then makes simulations on the computer.

<https://www.photon-cae.co.jp/>

Telecommunications

## NTT Communication Science Laboratories

[AI](#) [Voice recognition](#) [Machine translation](#)  
[Language acquisition & Development](#) [Data science](#)

As one of NTT's research and development centers, this facility focuses on the theme of future communications which "communicate to the heart", engaging in fundamental research in both information and human science, with the goal of establishing new theories and processing technologies that hold a deep understanding of people and information.

<https://www.kecl.ntt.co.jp/english/index.html>

Telecommunications

## Keihanna Laboratory, Kagoya Japan Inc.

It provides information services and research and development utilizing the ISP infrastructure facilities and data center infrastructure.

<https://www.kagoya.jp/>

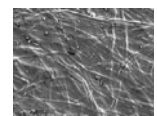
Commercial

## SANSHO CO., LTD Research Laboratory

[Natural polysaccharides](#) [thickener](#) [gelling agent](#)  
[functional paper](#) [plastic net](#)

Sansho was founded in 1955 as a trading company specializing in natural water-soluble polymer agents, and has built a strong position in the polymeric additive field and other fields. In order to provide both products and technical services as the basis of its business, Sansho conduct quality checking tests and research development of applied technology.

<http://www.sansho.co.jp>



Surface photograph  
of viscose processed  
paper Saffron®

## Commercial

### DAIICHI TECHNOS Co., Ltd.

Machine tools (IOT compound processing machines) and forging machines (press, sheet metal, forming machine), wholesale and retail machine repair (loaned to machine tool manufacturer), parts processing (MC, NC lathes), robots, automatic transfer device production



<https://www.d-technos.co.jp/>

## Commercial

### Nihon Kizai Co., Ltd.

[Machine trading company](#) [Robot](#) [Core Training](#)  
[Apprication Development](#) [Unit Product](#)

We import, export and sell a large variety of industrial equipment such as hydraulic and pneumatic controllers and systems, industrial robots and collavolative robot, components, scanning and surveillance equipment, electronic controllers, logistics equipment, energy-saving and environmental measurement systems and Internet-of-Things equipment. We also offer fabrication and manufacture of various industrial parts.

<https://www.nihonkizai.co.jp/english/>



The center has a robot showroom, lab (verification) room, seminar room, etc. We propose systems for applications that utilize robots.

## Commercial

### Japan Correspondence Machines and Tools Co., Ltd. Community Palace

With the theme of "information science to open a bright future," Community Palace provides training focused on technology for utilizing information science.

<https://nitsuki.co.jp/>

## Finance / Insurance

### MUFG Bank, Ltd. Kansai Business Center

Completed in April 2018. As a business center of MUFG Bank, Ltd., this institution plays an important role in providing stable financial services.

<https://www.bk.mufg.jp/>

## Government / Local government

### Biotechnology Research Department, Kyoto Prefectural Agriculture, Forestry and Fisheries Technology Center

[Microbial utilization](#) [crop development](#) [breeding engineering](#) [genetic engineering](#)  
[cell engineering](#)

With the collaboration of Basic Research Development which develop and explore basic and research-purpose seeds, and the Applied Research Department which works on using these seeds in the development of practical technology research, we aim to foster Kyoto's sake rice, black soy beans, and vegetables. We also aim to promote environmentally friendly agricultural technology utilizing micro-organisms (plant vaccines and plant growth-promoting microorganisms).

<https://www.pref.kyoto.jp/shigenken/>

## Universities / Educational institutions

### Institute of Free Electron Laser, Graduate School of Engineering, Osaka University

This R&D facility has a high-intensity picosecond pulse laser that ranges from the visible to the far infrared region. It is built with a combination of a 55MeV electronic linear accelerator and a variety of wigglers (radiant emitter). The operation of the equipment is currently suspended, but is planned to resume in the near future.

<http://www.fel.eng.osaka-u.ac.jp>

## Universities / Educational institutions

### Osaka Prefectural Kitaosaka Advanced Vocational Training Center

We are a vocational training facility for the purpose of human resource development in industries of Osaka. As job seeker training, we provide training in 7 subjects related to machinery, control, and architecture. As training for employed people, we provide technical courses such as new employee training and technical training for companies. We also operate a human resources development center that rents facilities for skill tests and technical training, etc.

<http://www.pref.osaka.lg.jp/tc-kiosaka/top/index.html>

## Research institutes

### KEC Electronic Industry Development Center

[EMC test](#) [Product safety test](#) [Anechoic chamber](#)  
[Seminar](#) [Engineering education](#)

(1) This facility is equipped with anechoic chambers for testing domestic and international EMC (Electromagnetic Compatibility) standards, and carries out EMC and product safety tests.

(2) This facility also offers a wide range of technical information related to electronics, including EMC and product safety, and works to support and raise new engineers.

<https://www.kec.jp/>



Large anechoic chamber for 10m method

## Research institutes

### Nanto Economic Research Institute

[Think tanks](#) [surveys and research](#) [consulting](#) [lecture training](#) [bulletins](#)

A regional think-tank established with the financial support from Nanto Bank, we are engaged in the study of local economies, industry trends, and business management. We provide study results to various quarters, in addition to holding seminars, employee training, and business management consultation handled by specialized staff.

<https://www.nantoeri.or.jp>

## Cultural facilities / Parks

### Takayama Chikurinen Garden

[Takayama Bamboo Forest Garden](#) [bamboo forest gardens](#) [Takayama bamboo forests](#) [tea-ceremony rooms](#)

This garden was developed to familiarize people at large with the beauty and shape of tea utensils ? tea scoops including Takayama tea whisks with about 550-year history, ladles, vases and incense containers ? and knitting needles. It was opened to promote bamboo products, the traditional industry of Ikoma City, and increase the level of culture and education in the area. In the beautiful garden, you will also find a biotope with some 50 kinds of bamboos, a museum (Japanese-style room, training room and exhibition room) and the Chikubuan tea house.

<http://www.tikurinen.jp/>

## Cultural facilities / Parks

### Nara Hokubu Hall Civic Cultural Hall

[Cultural facility](#) [Hall](#) [conference room](#) [Course](#)

A variety of cultural projects such as lectures and concerts for all generations are held at the municipal culture hall located on the 3rd floor, with the aim of promoting culture, the arts, social exchange, and a stronger local community.

<http://www.hokubu-hall.city.nara.nara.jp>

## Service industries

### Ion Technology Center Co., Ltd.

[Ion Implantation](#) [Analysis](#) [Outsourcing](#)  
[Research and development](#) [Compound semiconductor](#)

We are a professional group that offers consulting and technical development support in research and development, focusing on outsourcing services of ion implantation and material analysis.

<https://iontc.co.jp/en/>



Ion implantation, film deposition and annealing into compound semiconductor etc.

Service industries

## WILLCONSULTANT limited company

### [Ground survey](#)

At our center in the Keihanna Science City, we research and develop "fast, inexpensive and high quality" equipment for measuring land subsidence as a collaborative effort between industry and academia. We are exploring new areas of geotechnical measurement for MLIT's i-Construction program in order to play a future part in social infrastructure building.



Soil quality verification system

<https://www.eonet.ne.jp/~willconsultant/>

Service industries

## SEI Ikoma Seminar House

This facility contains large training rooms and lodging facilities available for corporate training programs and private social gatherings.

<http://www.midorinobunkaen.com/pages/sei-house.html>

Service industries

## KANKYO EISEI YAKUHIN Co., LTD Laboratory of Kansai Science/ Environmental Research Lab. of Public Health

### [Hygiene management of facilities](#) [Food inspection](#) [Sanitation](#) [Clinical inspection](#) [Work environment measurement](#)

Our company's business is bio-risk management, and we carry out measures against nosocomial infections, clean room management, work environment measurement, food inspection, and evaluation of therapeutic agents using pathological model insects.

<https://www.kanyaku.co.jp>

Service industries

## Environmental Research & Solutions Co., Ltd.

### [environmental survey and analysis](#) [waste/soil pollution](#) [environmental genetic analysis such as Covid-19\(non-living\)](#) [work environment/odor measurement](#) [water processing](#)

ER&S is a leading company of environmental chemistry founded in 1972. We will help improve any environmental issues using various solutions such as general chemical analysis, microanalysis of dioxins or PCB, soil pollution countermeasures, asbestos diagnosis, and even genetic analysis.

<http://www.ctiers.co.jp/>



Gene analyzer

Service industries

## SHARP WORKERS UNION Seminar House and Recreation Park I & I LAND

It is a resort accommodation facility that can be used for various occasions such as meetings, training, accommodation, meals, banquets, parties. The types of accommodations vary from single rooms, twin-bedded rooms, rooms for groups and cottages. It is fully equipped with a hall, meeting/training room, restaurant and banquet hall.

<https://www.iiland.ne.jp/>

Service industries

## Japan Speed Shore Co., Ltd.

### [Lifeline support](#) [proposal capability](#) [technical capability](#) [problem-solving capability](#)

A training facility for various types of earth-retaining and laser equipment for construction. This facility is a blend of Japanese- and Western-style architecture. It combines a turquoise roof, which evokes images of the neighboring Nara district, and light brown tile-clad exterior walls. It has a dry landscape garden created with white sands and arranged stones in karesansui style that offers a magnificent view with the borrowed background scenery of the Ikoma Mountains.

<https://speedshore.co.jp/>

Service industries

## Nihon Seigyo Co., Ltd.

### [Embedded software](#) [medical software](#) [communication / measurement / control](#) [contract development](#)

We specialize in embedded software development for various control devices, and mainly engage in contract development of control software for FA equipment, measuring equipment, etc., and in-house development of medical software. In addition, we will answer your concerns about various software, such as analysis and customization of existing software.

<https://www.nseigyo.co.jp/>

Service industries

## Hirakata Giken, Inc.

### [Mechanical design](#) [anti-vibration](#) [Non-Bren](#) [Bitappy](#) [Bita Block](#)

We have been engaged in mechanical design and manufacture since the establishment of our company in 1972. In 1995 we developed and put on the market a brand-new anti-vibration material Non-Bren, which can also be used as shock absorbing material and earthquake resistant fixing material. Our own branded product, the Non-Bren is employed for underfloor soundproofing and anti-vibration on the JR Shinkansen trains.

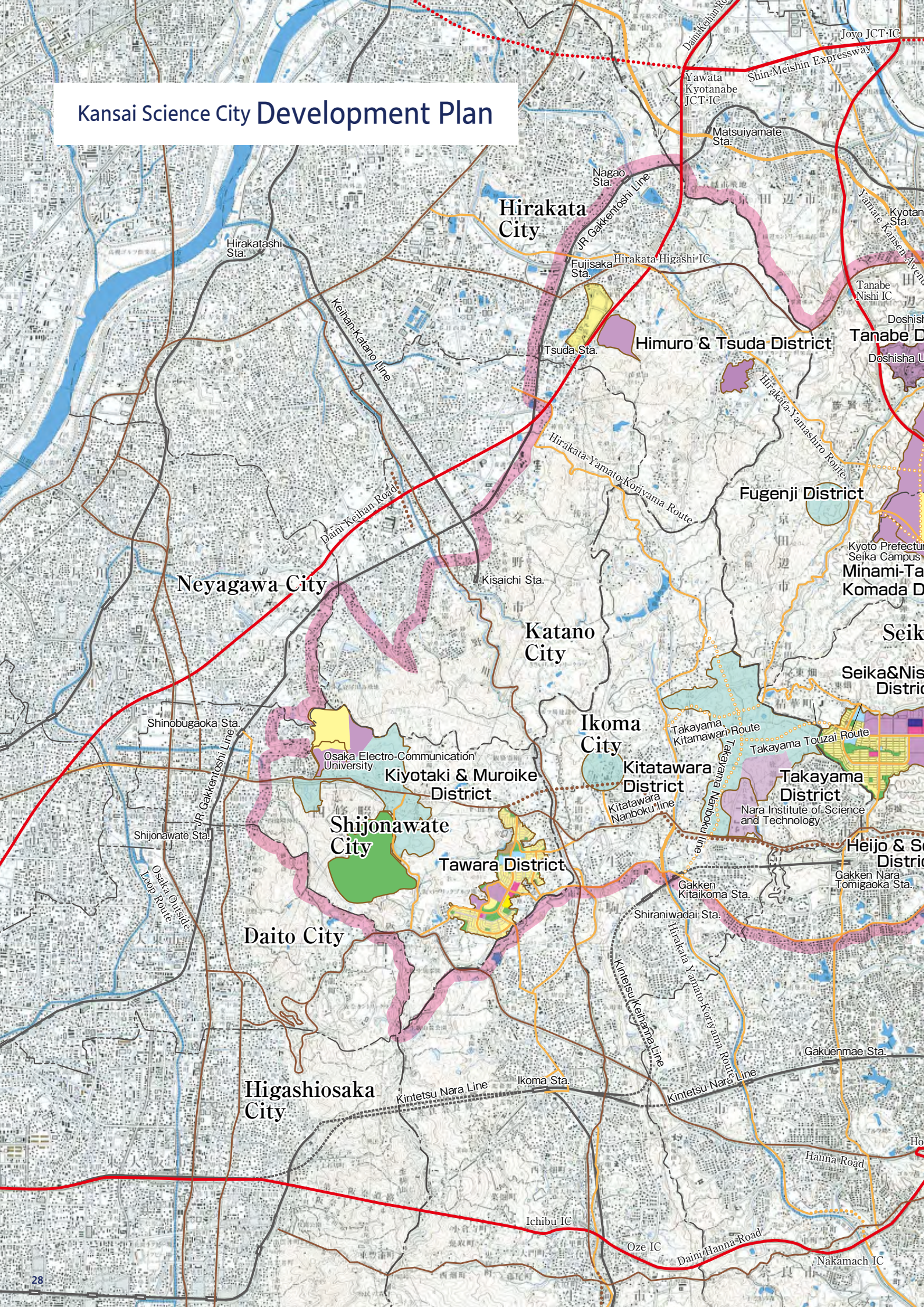
<https://www.hirakata-g.co.jp/>

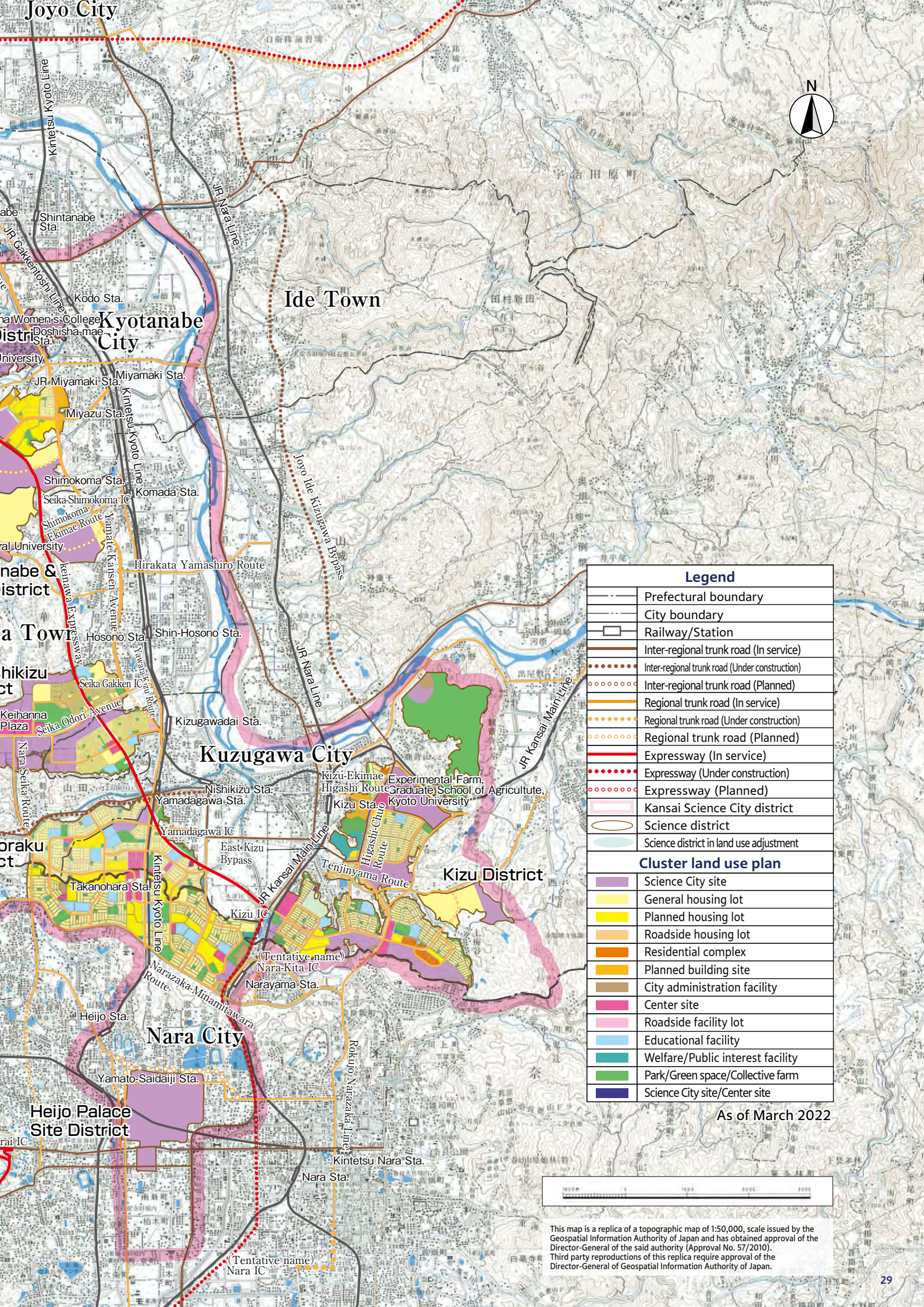
# Facility Index

Facility Name	Category	Page
ADCOAT CO., LTD.	Chemical / Chemical products	19
Advanced Telecommunications Research Institute International (ATR)	Research institutes	11, 12
ANGEL PLAYING CARDS MFG KYOTO COL.TD Kansai Science City Manufacturing and Research Center	Other manufacturing industries	23
Asahi Printing Co.,Ltd. Kyoto Creative Park	Paper / Printing	19
ASHIDA MFG CO.,LTD Head Factory	Machinery	21
Askk Co., Ltd.	Metal products	20
Atecs Co., Ltd. Kyoto Office Production Research and Development Center	Plastic	19
Boul'mich Co., Ltd. Hirakata Research Factory	Food	18
Burley Plus CO., LTD	Electrical equipment	22
Cathy Chemical Industry Co., Ltd. Cathy Technical Center	Chemical / Chemical products	19
DAIICHI TECHNOS Co.,Ltd.	Commercial	25
Daiwa House Industry Central Research Laboratory	Construction	18
Doshisha Center for the Promotion of Venture Business	Other	11
Doshisha University (Kyotanabe Campus·Gakken Toshi Campus)	Universities / Educational institutions	15
Doshisha Women's College of Liberal Arts	Universities / Educational institutions	14
Dynamic Tools Corporation	Machinery	21
EC forntier.Co.,LTD	Precision / Medical equipment	23
Environmental Research & Solutions Co., Ltd.	Service industries	26
Fukujuen CHA Experience Park	Food	19
GenuineR&D Co., Ltd. Kyoto Institute	Food	18
GNES Corporation	Machinery	21
HIRAIDENKEIKI Co.,Ltd. Reiwa-Keihanna Office	Electrical equipment	22
Hirakata Giken, Inc.	Service industries	26
HIRANO TECSEED Co., Ltd.	Machinery	22
Hitachiosen Corporation Environment Business Headquarters Business & Product Development Division	Machinery	22
ICHIGUCHI CORPORATION	Other manufacturing industries	23
Icom Inc. Narayama Research Institute	Electrical equipment	22
Inoue Manufacturing Co.,Ltd	Machinery	21
International Institute for Advanced Studies	Research institutes	7
Ion Technology Center Co., Ltd.	Service industries	25
Japan Correspondence Machines and Tools Co., Ltd. Community Palace	Commercial	25
Japan Juice Co.,Ltd. Kyoto south center	Food	18
Japan Speed Shore Co., Ltd.	Service industries	26
Keihanna Laboratory, Kagoya Japan Inc.	Telecommunications	24
KAJI CORPORATION	Other manufacturing industries	23
KANKYO EISEI YAKUHIN Co., LTD Laboratory of Kansai Science/Environmental Research Lab. of Public Health	Service industries	26
KAWACHI KINZOKU CO., LTD	Metal products	20
KEC Electronic Industry Development Center	Research institutes	25
Keihanna Commemorative Park (Kyoto Prefectural Kansai Culture and Science City Commemorative Park)	Cultural facilities / Parks	17
Keihanna interaction Plaza·Keihanna Plaza Hotel	Cultural facilities / Parks	11
Keihanna Open Innovation Center @KYOTO (KICK)	Research institutes	10
KINDEN CORPORATION Kyoto Institute	Construction	18
Kitamura Co., Ltd.	Metal products	20
Kowa Industrial Co., Ltd.	Machinery	21
KPS Industry Co., Ltd.	Other manufacturing industries	23
Kyocera Corporation,Keihanna Research Center	Electrical equipment	22
Kyoto Techno Center Kyoeiseicha Co.,Ltd	Food	18
Biotechnology Research Department, Kyoto Prefectural Agriculture, Forestry and Fisheries Technology Center	Government / Local government	25
Kyoto Prefectural University (Seika Campus) Faculty of Life and Environmental Sciences Farm / Industry-Academia-Government Collaboration Research Hub Facility	Universities / Educational institutions	14
Kyoto Press Kogyo Co., Ltd.	Metal products	20
Experimental Farm, Graduate School of Agriculture, Kyoto University	Universities / Educational institutions	14
MANYO TOOLS CO., LTD.	Metal products	21
Marutaka Co.,Ltd.	Other manufacturing industries	24
Kyoto Technical Center, Meiwa Rubber Co., Ltd.	Rubber / Rubber products	20
MIZUHO Co.,LTD.	Glass / Earth and stone products	20
MOLITEC STEEL Co.,LTD. Keihanna R&D Center	Metal products	21
Morishita Jintan Co.,Ltd. Osaka Techno Center	Food	19
Kyoto Techno Center M-System Co., Ltd.	Electrical equipment	22
MUFG Bank,Ltd. Kansai Business Center	Finance / Insurance	25
Kyoto Plant R&D Center, Naigai Kasei Co., Ltd.	Plastic	20
Nanto Economic Research Institute	Research institutes	25
Nara Hokubu Hall Civic Cultural Hall	Cultural facilities / Parks	25
Nara Institute of Science and Technology (NAIST)	Universities / Educational institutions	15

Facility Name	Category	Page
Nara Medical University	Universities / Educational institutions	15
Nara National Research Institute for Cultural Properties	Research institutes	13
Nara Palace Site Historical Park	Cultural facilities / Parks	17
Nara Women's University	Universities / Educational institutions	15
NARAGAKUEN UNIVERSITY	Universities / Educational institutions	15
Kansai-kan of the National Diet Library	Cultural facilities / Parks	7
National Institute of Information and Communications Technology (NICT)	Research institutes	12
National Institutes for Quantum Science and Technology (QST) Kansai Photon Science Institute	Research institutes	13
NEURON JAPAN CO.,LTD.	Other manufacturing industries	24
New Japan Chemical Co., Ltd. Kyoto R&D Center	Chemical / Chemical products	19
Nidec Center for Industrial Science and Technology	Electrical equipment	22
Nihon Kizai Co.,Ltd.	Commercial	25
Nihon Seigy Co., Ltd.	Service industries	26
Nijo Maruhachi Co.,Ltd. Nijo Maruhachi Ceremony Research Laboratory	Other manufacturing industries	24
NTT Communication Science Laboratories	Telecommunications	24
Keihanna Technology Innovation Center , Omron Corporation	Electrical equipment	22
Oriental Bakery Corporation, Kyoto Plant	Food	18
Osaka Electro-Communication University (Shijonawate Campus)	Universities / Educational institutions	14
Osaka Prefectural Kitaosaka Advanced Vocational Training Center	Universities / Educational institutions	25
Institute of Free Electron Laser, Graduate School of Engineering,Osaka University	Universities / Educational institutions	25
Panasonic Holdings Corporation Corporate Technology Sector	Electrical equipment	22
Photon Co.,Ltd.	Other manufacturing industries	24
PROTEX·JAPAN Inc.	Other manufacturing industries	24
Research Institute of Innovative Technology for the Earth	Research institutes	12
RIKEN	Research institutes	13
Rohto Pharmaceutical Co.,Ltd Rohto Research Village Kyoto	Pharmaceuticals	19
Sakamoto Seiki Co.,Ltd.	Metal products	20
Sakamoto Sekkei Technical Development Lab.	Other manufacturing industries	23
SANSHO CO., LTD Research Laboratory	Commercial	24
Santen Nara Research and Development Center	Pharmaceuticals	19
SAWA CORPORATION	Other manufacturing industries	24
SEI Ikoma Seminar House	Service industries	26
SEIWA INDUSTRY CO.,LTD.KIZUGAWA ECT CENTER	Transportation equipment	23
SEIWA OPTICAL Co.,Ltd.	Precision / Medical equipment	23
Sekisui House Ltd. Comprehensive Housing R&D Institute	Construction	18
SEW-EURODRIVE JAPAN CO., LTD Kyoto Factory	Machinery	21
SHARP WORKERS UNION Seminar House and Recreation Park I & I LAND	Service industries	26
SHIMADZU Future Collaboratory	Precision / Medical equipment	23
SHIMAKAWA SEISAKUSYO CO.,LTD.	Machinery	21
Shinwa Precision Machinery Co.,Ltd	Transportation equipment	22
silex technology, Inc.	Other manufacturing industries	23
Souraku Industry Co., Ltd.	Steel / Non-ferrous metals	20
SOWA Technical Institution KEIHANNA	Other manufacturing industries	24
Spread Co., Ltd. Techno Farm Keihanna	Agriculture / Forestry and Fisheries	18
Sunceed Co.,Ltd.	Plastic	20
Suntory World Research Center	Food	18
Taiko Pharmaceutical Co., Ltd. Kyoto Plant/R&D Center	Pharmaceuticals	19
Takayama Chikurinen Garden	Cultural facilities / Parks	25
Takayama Science Plaza	Other	11
TAKAYOSHI KINZOKU CO., LTD.	Metal products	21
Takazono Corporation Takazono Technology Incorporated	Precision / Medical equipment	23
TAKAZONO LEAVES CO.,LTD.	Other manufacturing industries	24
TATSUTA Electric Wire and Cable Co., Ltd., Tatsuta Technical Center	Steel / Non-ferrous metals	20
Technoble Co.,Ltd	Chemical / Chemical products	19
Kyoto Laboratory, Technoflex Corporation	Metal products	21
TOEISANGYO CO.,LTD.	Other manufacturing industries	24
UEDA INDUSTRY CO., LTD	Metal products	20
UEROKU PRINTING CO.,LTD.	Paper / Printing	19
Will Co., Ltd.	Precision / Medical equipment	23
WILLCONSULTAT limited company	Service industries	26
WIST CO.,LTD.	Machinery	21
Yoshizumi Industry Corporation	Machinery	22

# Kansai Science City Development Plan





Legend	
	Prefectural boundary
	City boundary
	Railway/Station
	Inter-regional trunk road (In service)
	Inter-regional trunk road (Under construction)
	Inter-regional trunk road (Planned)
	Regional trunk road (In service)
	Regional trunk road (Under construction)
	Regional trunk road (Planned)
	Expressway (In service)
	Expressway (Under construction)
	Expressway (Planned)
	Kansai Science City district
	Science district
	Science district in land use adjustment
Cluster land use plan	
	Science City site
	General housing lot
	Planned housing lot
	Roadside housing lot
	Residential complex
	Planned building site
	City administration facility
	Center site
	Roadside facility lot
	Educational facility
	Welfare/Public interest facility
	Park/Green space/Collective farm
	Science City site/Center site

As of March 2022



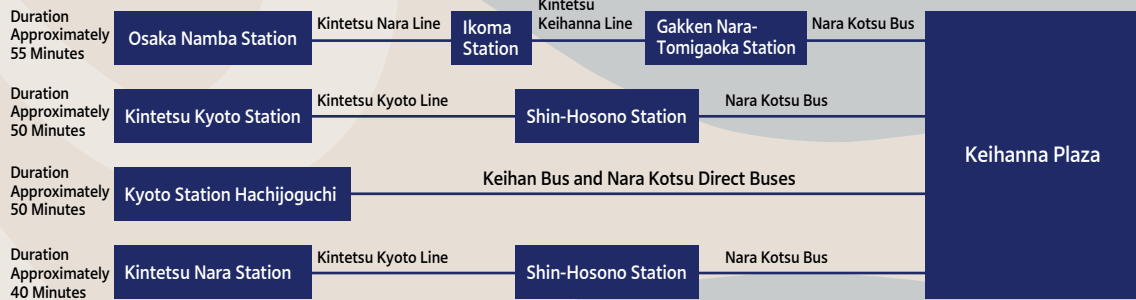
This map is a replica of a topographic map of 1:50,000, scale issued by the Geospatial Information Authority of Japan and has obtained approval of the Director-General of the said authority (Approval No. 57/2010). Third party reproductions of this replica require approval of the Director-General of Geospatial Information Authority of Japan.

## Access to Keihanna Plaza

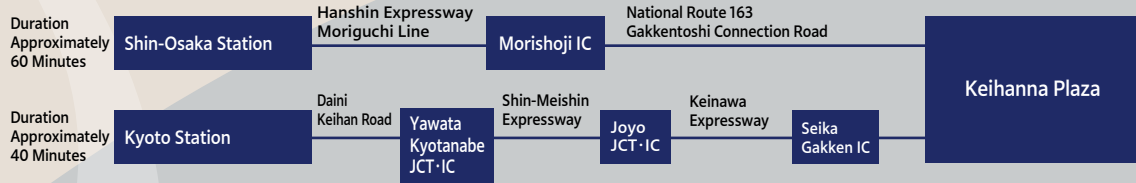
### ● From the Airport



### ● From Kyoto, Osaka, and Nara by Train and Bus



### ● From Kyoto and Osaka by Car



### Keihanna Science City's Logo



“Keihanna” refers to the Kansai Science City. The logo of the city depicts a flying angel known as “Hiten”, who scatters flower petals, plays music and burns sweet incense while flying in the sky. The gentle curves in the logo represent the slopes of the Keihanna hills, and the three patterns symbolize “time” accumulated throughout the past, present, and future. The three patterns also represent the cooperation between Kyoto, Osaka, and Nara, or the collaboration between industry, academia, and government.

## Public Foundation of Kansai Research Institute



Public Foundation of Kansai Research Institute  
Kansai Science City Construction Promotion Conference  
Laboratory Wing 3F, Keihanna Plaza  
(Keihanna Science City)  
1-7 Hikaridai, Seika-cho, Soraku-gun, Kyoto 619-0237  
TEL.0774-95-5105 FAX.0774-95-5104  
<https://www.kri.or.jp/en/>